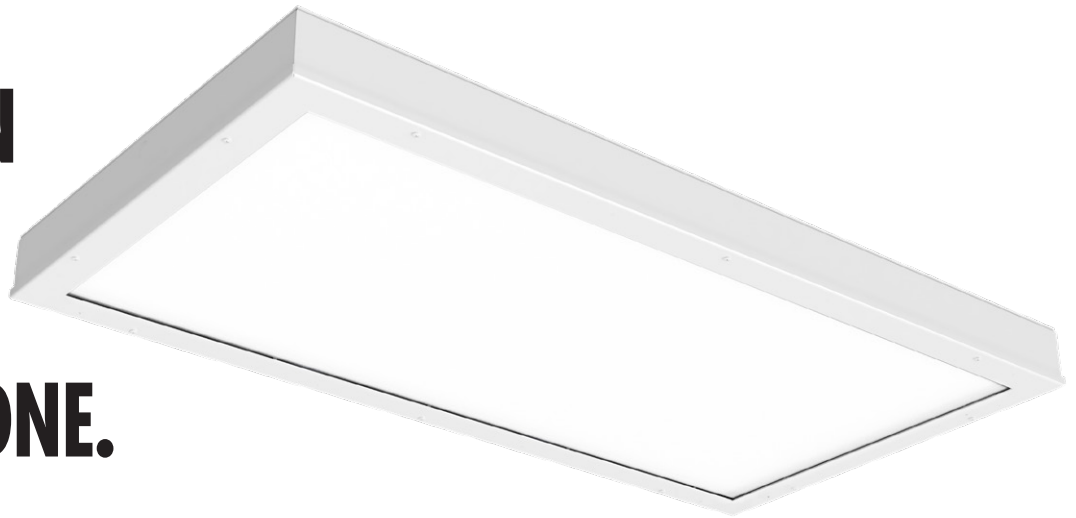


We Take
**MADE IN THE
USA
SERIOUSLY**



ADVANTAGE
ENVIRONMENTAL LIGHTING

FOCUSED ON QUALITY LIGHTING SINCE DAY ONE.



At Advantage Environmental Lighting, we design and manufacture high-quality LED fixtures for industrial and commercial applications. The majority of our products are proudly built in our Fort Worth, Texas, facility—delivering consistent quality, reliable performance, and the craftsmanship our customers trust.

Since 2014, we've grown from a manufacturer into a trusted partner, helping create spaces that shine. Our dedicated team uses the latest technology and premium materials to engineer solutions that bring comfort, safety, and efficiency to offices, healthcare facilities, correctional institutions, cleanrooms, and beyond.



Completed housings and components protected and ready for the assembly stage of production

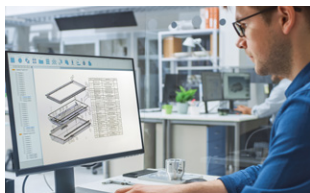
With an accomplished team of lighting professionals and a representative network spanning all 50 states and Canada, we combine deep expertise with a personal commitment to every project. And if you don't see exactly what you need—we'll custom-build it for you.

**RECESSED • SURFACE MOUNT • WALL MOUNT • DIRECT/INDIRECT
EXIT/EMERGENCY • EXPLOSIVE PROOF • LINEAR • PAINT BOOTH
WET LOCATION • MRI • INDOOR/OUTDOOR • CUSTOM**



THERE ARE THREE THINGS YOU CAN ALWAYS COUNT US ON, WE LISTEN. WE LEARN. WE ADJUST.

Our founding owner, Brent Enterkin, established an open door policy from the very first day of business in 2014. What that means is that if you have an idea, or feedback of any kind... we want to hear it. Our goal is to continuously improve and grow, and that requires feedback. Many of the best product improvements we've implemented have come from in-the-field customers and installers.



Design

We utilize certified engineers, state of the art equipment and software, and decades of experience to design the best fixtures possible for every application.



Fabrication

Our fabrication department is like the heart of Advantage. This is where the 'advantage' of having new, state-of-the-art equipment lets us compete with anyone in terms of capacity and accuracy.



Weld/Finish

Integral to a strong and well finished fixture is the welding and finishing departments. Both of these departments are staffed with some of our most qualified and experience personnel.



Paint

We built a powder coating line in house so we could better monitor quality control, and shorten time delivery time on finished fixtures. Plus, we've also gained extra finish capabilities.



Assembly

Our Engineering Department works closely with the Assembly Managers and Quality-Control personnel to make sure the every fixture leaves our building exactly as designed.



Boxes

One of the best ways to insure that the final product reaches the customer in pristine condition, is an appropriate box. That's why we've invested in our own automatic box making and cutting machine.



Shipping

Traditionally an overlooked department is shipping. But the coordination of logistics with the expectations of customers is crucial to doing what we say we can do.



We have an extensive **Quality Control System** (QCS) that enables us to quickly identify non-conforming designs or processes, segregate them, and prevent a

recurrence. Every department at Advantage; Engineering, Fabrication, Powder-Coating and Assembly work together and help each other to develop better ways of doing things. No process at Advantage is a one way street.

We have a long-standing track record of consistently meeting client expectations for quality and performance, and when the unexpected happens, we take it in stride and make it right.





BASTILLE

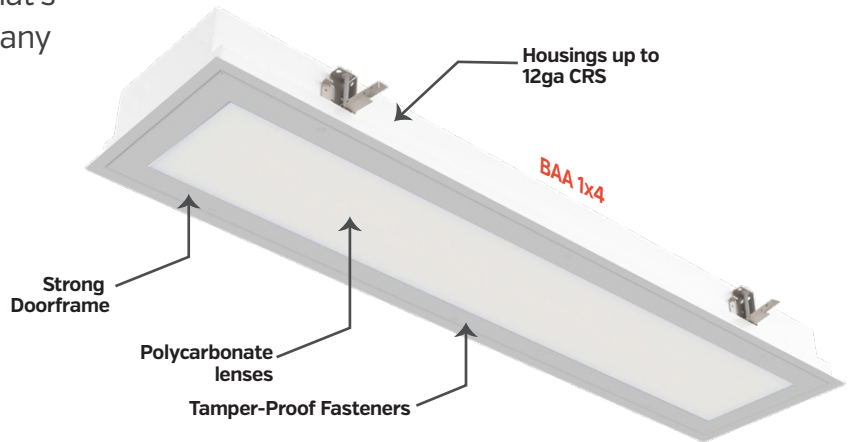
CORRECTIONAL + VANDAL RESISTANT

Correctional facilities have some of the most stringent requirements for lighting you'll find anywhere. Light fixtures and exit signs have to be

able to perform at a very high level in an environment that can present many challenges *(plus Local, State, and Federal requirements)*.

Repeated attempts at entry (for the purpose of concealment), abuse, and long, long hours of continuous use are just some of the challenges these fixtures will face. A normal light fixture will not survive long in these environments, and that's why our **Bastille** line is the choice for so many specifiers.

Integrated blade traps, tamper-resistant hardware, virtually unbreakable lenses, motion sensors, and housing designs that meet the requirements for ligature-resistant, are just a few of the elements that make our Bastille line unrivalled.

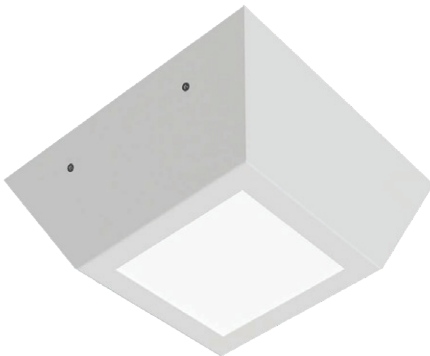


BABSWM PRISON GRADE LED EXIT SIGN

Our **BABSWM** is a heavy duty, vandal-resistant, surface wall mount LED exit sign designed for

high-performance and long-life. This is the perfect Exit Sign solution for correctional facilities, schools, and any public area where strength and safety is paramount. The angled sides make it safe for just about any application, and a .125" clear polycarbonate lens is sealed to the doorframe for a higher-level of security.

EXIT SIGNS ARE AVAILABLE AS RECESSED, WALL MOUNT OR TOP / SIDE MOUNT



BAS SURFACE MOUNT LED PRISON GRADE

The **BAS** is ideal for many confinement/security applications. This surface mount luminaire is perfect for applications such as inmate cells, behavioral health facilities, secure corridors and general population areas. Available in a range of lumen packages, lens options, and finishes. The BAS clamshell design is impact resistance and prevents contraband concealment and unauthorized fixture penetration.



COMPACT SIZE • VARIETY OF OPTIONS • CLAMSHELL HOUSING

CASE STUDY



This simple extension saved a lot of time and money.

We were tasked with finding a labor friendly and aesthetically pleasing solution for a lighting upgrade at Orient Prison in Pickaway County, Ohio.

THE CHALLENGE: Every cased column had a conduit feed coming out of it, but always in a different location. There was no clean way to make every cell look uniform, and there was additional labor involved having to drill every fixture in a different spot to match up to the existing conduit.

THE SOLUTION: We came up with a solution, our BAFF, that would add an extension ring to the end of the fixture. This way, the electrician could simply mount it flush to the casing. It didn't matter where the conduit was exiting as it was concealed by the fixture. This decreased labor significantly while providing a true anti-ligature solution.



DID YOU KNOW?



We designed the ultimate in TV/Flat Screen housings. Our **BTV** is a surface mount enclosure constructed from

heavy-gauge steel: so it's strong, easy to install, and can stand up to almost anything. The inset doorframe is constructed from the same material as the housing and comes standard with Torx center-pin reject fasteners.



BAL HIGH ABUSE CORNER MOUNT

The **BAL** Series is an architecturally designed surface mount LED fixture, and is a great choice for continuous run mounting. The BAL utilizes state-of-the-art LED technology to deliver the highest possible efficiency in the lighting industry, as well as many safety and design features that makes this fixture one to last.

The BAL is very impact resistant and prevents unwanted fixture penetration. Well suited for correction facilities, schools, behavioral health facilities, stairwells, corridors, detention centers, and public transportation areas.

The BAL is also ligature-resistant when mounted with top of fixture and at least three sides flush with ceiling/walls, and the addition of pick-proof sealant caulk is used on all edges.

With a wide range of options, this is one of the most versatile fixtures you'll find anywhere.



With .187 Poly lens

LIKE ALL OUR FIXTURES, THE BASTILLE LINE FEATURES UNCOMPROMISING QUALITY FOR DESIGN, FIT AND FINISH, AND LONGEVITY.

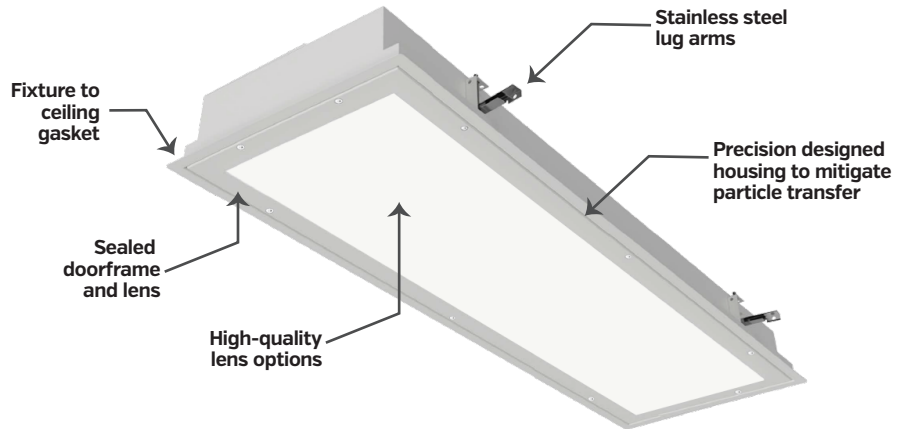
CLEANROOM

LED LUMINAIRES

From high-tech manufacturing to food processing and medical centers, cleanroom fixtures have to be right - the first time.

Cleanroom fixtures are enclosed and sealed to prevent moisture, dirt, and bacteria from entering the facility through the plenum or around the fixture and into the facility. Each fixture is welded and enclosed, ground smooth, and painted with premium powder coating after fabrication. Plus inset and overlap doorframes are available to meet the needs of various clean room and biosafety laboratories.

Because we often design custom fixtures, this allows us to provide lighting solutions that meet the exact needs of nearly any facility. Choose from custom lumen outputs, housing and doorframe gauge and material, CRI, colored LEDs (such as amber LEDs, RGBW or Tunable White), and more.



CLD RECESSED GRID OR FLANGED LUMINAIRE

The **CLD** is an IP65, wet location, IC-rated cleanroom luminaire which provides a cost-effective LED solution. A gasketed housing and door frame create a sealed enclosure. The CLD is available in 1x2, 1x4, 2x2, and 2x4 sizes. Available options such as anti-microbial paint, 90 CRI, MILSTD 461G compliant, and a 14W emergency driver. Suitable for biosafety labs rated BSL 1 and 2 (inset doorframe) and biosafety labs rated BSL 3 and 4 (overlap doorframe). Suitable for Class 1/ISO 3 Cleanrooms. For use in insulated ceilings.

EASY TO CUSTOMIZE • UP TO 45,000 LUMENS • GRID OR FLANGE



CLQ SEALED LED PANEL CLEAR OUTER LENS

The **CLQ** is an economical, fully luminous sealed flat panel designed for long-life and easy cleaning/wipe down maintenance. Back lit design fully illuminates the flat panel, eliminating hot spots. Cleanroom, behavioral healthcare, food preparation or service, locker rooms, canopies, high-tech manufacturing, research centers, public spaces, restrooms, wet location, kitchens and much more. Easy to install, easy to clean, available in several sizes and also vandal-resistant.

Ligature Resistant



LESS THAN 2" DEEP • UP TO 8400 LUMENS • LIGATURE-RESISTANT



CLP CLEAN ROOM TOP ACCESS TROFFER

The **CLP** is 600lb load tested to reduce the hazard of foot traffic. The one piece overlapping door provides easy cleaning and air-tight luminaire integrity. Ideal for food processing facilities, biomedical labs, testing centers, pharmaceutical labs, general cleanrooms, and more.

Designed for IC-Rated recessed ceiling mounting into walkable grid or walkable ceiling systems. Suitable for walkable ceilings [flange] up to 4" in thickness. Grid installation is suitable for 1" and 1.5" T-bar ceilings. This is a strong and attractive fixture.

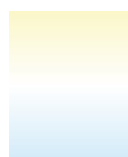


OUR CLEANROOM LINE OF FIXTURES ARE BUILT TO ORDER TO THE EXACT SPECIFICATIONS REQUIRED FOR EACH APPLICATION.

LIGHTING MODES



These days lightening requirements is often not just about white LEDs. Color options are becoming relevant as specifiers are creating more efficient and comfortable working areas.



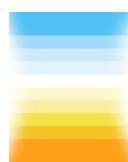
WHITE LEDs: Even "white" LEDs are tunable by adjusting the color temperature [CCT]. We offer a wide range of CCT for almost any fixture we build.



AMBER/GREEN/RED LEDs: We offer amber, green, and red LEDs in a variety of our fixtures.



RGBW: We offer RGBW drivers in the widest range of fixtures of any manufacturer. RGBW facilitates four colour source channels: Red, Green, Blue and White. This allows you to not only create millions of colour options, but also a very pure white.



TUNABLE WHITE: Unlike traditional dimmable lights, Tunable White lights allow you to not only adjust the brightness but also control the color temperature of the light.

DON'T FORGET THE EXIT SIGN.



Our **CLIR** is a recessed, cleanroom exit sign that is manufactured to all the same specifications as our other fixtures. Comes standard with a self-diagnostic backup battery and comes with options like anti-microbial finish, tamper-proof fasteners, and a wide choice of housing materials.



MEDICO

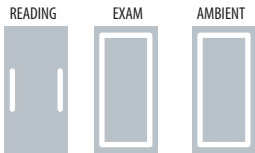
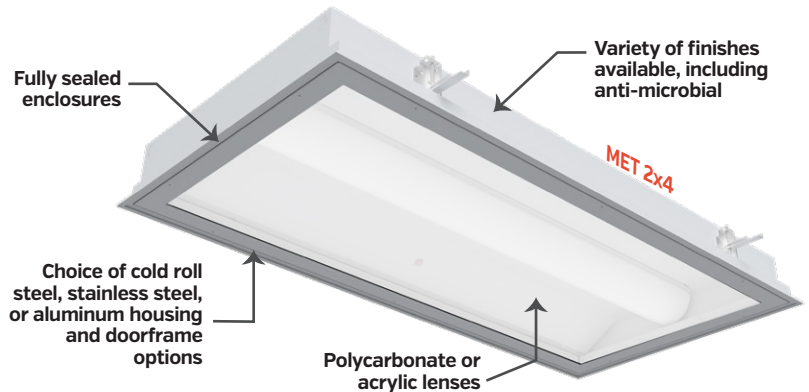
MEDICAL GRADE

Our line of Medico products not only offer the highest performance and efficacy on the market, but are built to specific requirements for

many healthcare applications. Easy to customize and built to last.

The Medico product line is a full array of fixtures for patient rooms, surgical suites, MRI and Imaging suits, examination rooms, behavioral health facilities, procedure rooms, as well as general hospital and institution ambient/task lighting. Customizable for each application, with choices in housing and door frame material, lenses, optics, lumen outputs, dimming drivers, and wide range of controllers. Our fixtures are designed, engineered, and manufactured in the USA to meet the needs of demanding healthcare applications.

Our fixtures can be integrated into bedside, wall or networked control systems.



MCNCV CONCAVE PATIENT ROOM LIGHT

Available in 2x2 and 2x4 body sizes. Architects find these fixtures especially functional for health-care facilities, this fixture features a unique curved lens which is “edge lit” and eliminates the center glare common with so many troffers. Perfect for patient lighting.

The **MCNCV** Series is an IC-Rated LED troffer with a centered concave diffuser with perimeter lighting. A gasketed housing and door frame create a sealed enclosure.

CONCAVE LENS WITH EDGE LIT ILLUMINATION • WIDE RANGE OF OPTIONS



MLVT COMMERCIAL GRADE VAPOR TIGHT

The highest possible efficiency in the lighting industry. The fixture is constructed of a fiberglass housing with a VA (f1) FRP UL rating. And while a vapor tight might be a bit utilitarian in appearance, it gets wide use in healthcare facilities, hospital kitchens, parking garages, work shops, stair wells, and more.

The **MLVT** Series is a commercial grade LED vapor tight, with a sealed and gasketed enclosure that is completely dust and moisture resistant. The MLVT utilizes state-of-the-art LED technology to deliver

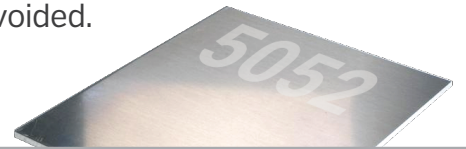
INDOOR OR OUTDOOR • IP65, IP66 AND IP6

MRI & NON-FERROUS



Over the past few years we have doubled the number of fixtures that fall into this category, and our Engineering Departments have several more in late development stages.

These fixtures are manufactured from 5052 marine grade aluminium, and when combined with remote mount power supplies, are perfect for MRI suites, and anywhere radio interference from lighting is to be avoided.



MRI FIXTURE SPOTLIGHT

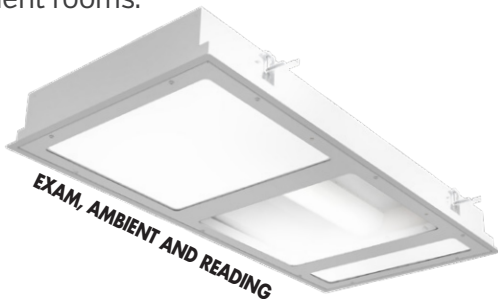


The **MEO** is a sealed downlight with a non-ferrous construction for MRI and Imaging Suite applications. High transmission diffuser provides a 110° FWHM beam angle and completely diffuses the view of the LEDs. Optics provide excellent vertical and glare-free illumination. Clear outer tempered glass lens of desired thickness. Non-ferrous aluminium construction with 6" aperture aluminium trim. Power supply is remote mounted outside an EMU shielded room. This is one of our most popular non-ferrous fixtures for good reason.



MEE MEDICO RECESSED GRID

OUR **MEE** is a popular and highly flexible choice for hospitals, nursing homes and other patient care facilities. You can choose from any combination of ambient, exam, and reading light modes Plus you can specify a wide range of CCT and Lumens for each circuit. The MEE is an IC-rated specification-grade luminaire designed for patient rooms.

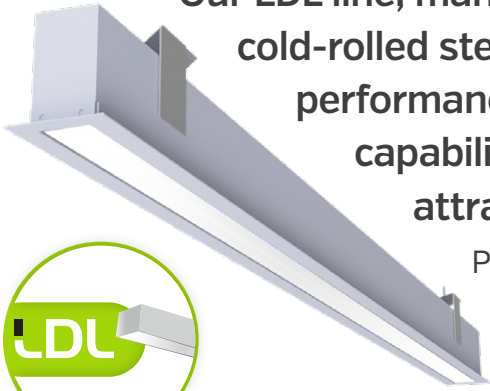


You can even choose an optional low-voltage controller that offers communication to patient bedside controls and wall switch controls.



OUR MEDICO LINE HAS A FIXTURE FOR VIRTUALLY ANY LIGHTING APPLICATION.

Our LDL line, manufactured with US cold-rolled steel, combine performance, simplicity and capability into clean and attractive luminaires.



Plus, at the heart of every LDL are proprietary

features that produce great illumination without the glare often found in other fixtures. Available as recessed, surface mount, or suspended.



LDL120R 12", ASYMMETRICAL LINEAR LIGHTING FOR O.R. CEILINGS

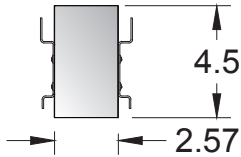
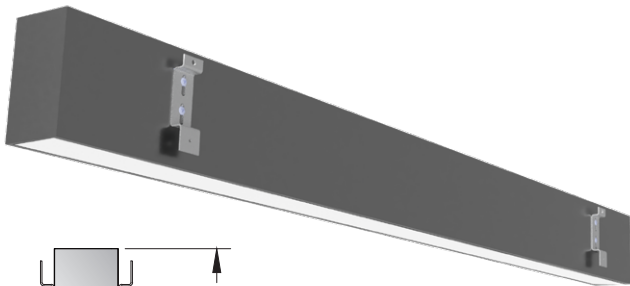
The LDL120R is an exclusive design from us and specifically designed

to fit surgery suites ceilings. This fully customizable lighting system can be easily configured and adapted to specific needs. Flexibility is a key feature - with any shape possible and a wide range of options to customize to a surgery suites specific needs.



UNIQUE CORNER CONNECTORS FACILITATE A QUICK INSTALLATION - AND A WIDE RANGE OF SHAPES

WIDE APERTURE • RGBW OPTION • EXCLUSIVE REFLECTOR DESIGN



COMPACT SIZE, NEAR UNLIMITED POSSIBILITIES

LDL2x3 2"x3" RECESSED LINEAR

The **XDL23** is available in recessed, wall mount, and suspended versions. This is a very clean edge, architecturally

pleasing linear light. Shown here is the recessed version [XDL23R] and like all our XDLs comes with a high-quality, satin snap-in lens that hides the internal components. Plus with lumens up to 1400 per foot, this is a high-quality, performance minded luminaire.

UP TO 1400 LUMENS PER FT. • COMPACT AND POWERFUL

LINEAR LIGHTING IS WELL SUITED FOR COMMERCIAL, INDUSTRIAL AND RESIDENTIAL SPACES. LINEAR PROVIDES CLEAN AESTHETICS AND STATE-OF-THE-ART OPTIONS TO CREATE GREAT ILLUMINATION

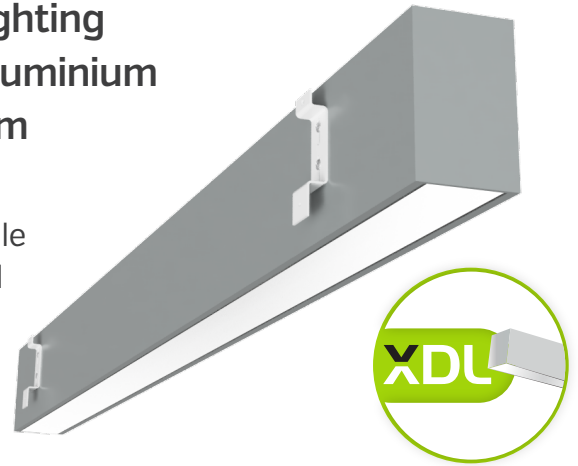


Linear fixtures are some of the most flexible in terms of the shapes and lengths possible.

From star shapes to L or X or custom shapes, linear expands your possibilities.

Our XDL series is a leading choice for aluminium lighting fixtures. Featuring 5052 marine grade extruded aluminium housings, XDLs find their ways into everything from high-tech data centers to health clinics.

We've incorporated modern sensibilities into our XDL line, all while providing optimal light transmission and LED diffusion. Extruded aluminum fixtures are light, easy to install, and are naturally non-corrosive. Perfect for any area where moisture, chlorine, or other invasive airborne particles are present, and where a non-ferrous fixture is needed.



XDLVPWL 4.0" X 4.5" SURFACE MOUNT VANDAL RESISTANT WET LOCATION

Our **XDLVPWL** was custom designed for a TOPGOLF venues to address the very real challenge of having lighting that can stand up to errant golf balls (and sometimes clubs). What we

designed is a strong, vandal-resistant, overlap door fixture. This is a great fixture for public areas, transit facilities, sport arenas, parking garages, and much more. This is great example of how we can custom build lighting to fit specific, and sometimes challenging applications.



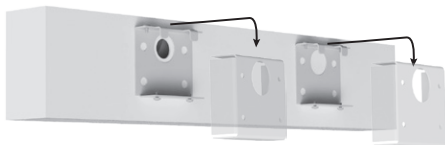
VANDAL RESISTANT • WET LOCATION • BUILT TO SPECIFICATIONS

XDL4WW 4.0" X 4.5" WALL MOUNT WALL WASH

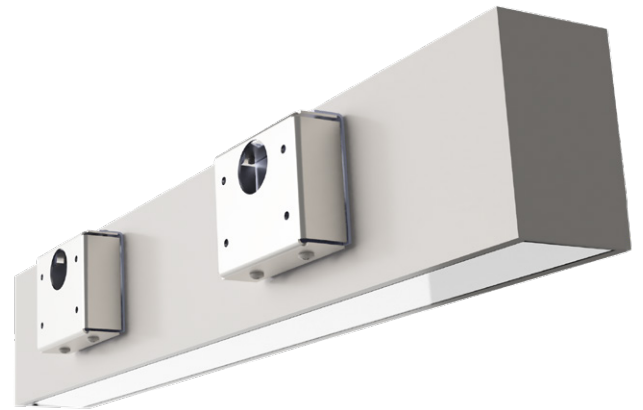
The **XDL4WW** is a LED linear wall mount fixture, designed with quality craftsmanship.

With this wall wash design, a pleasing and efficient light is cast down the wall - perfect for retail and office areas. Like all our wall mount XDLs, it's engineered for a quick installation.

Our XDL series provides clean lines, smooth continuous runs, and tight lens fitments. Also available in custom angles and lengths.



Fixture fits easily and quickly into included wall brackets



One of our most popular shapes in the last few years as been the hexagon. Available in several widths, and designed for continuous runs, this LHEX is excellent choice for schools, offices, and retail.



BH BEHAVIORAL HEALTH + VANDAL RESISTANT

Ligature Resistant



Our Behavioral Health series (BH) is based on many of the fixtures you'll find in the Medico series. This sub-category highlights the fixtures most suitable for Behavioral Health Facilities.



BHEI SURFACE MOUNT



BHEI SURFACE MOUNT



BHI SURFACE MOUNT



BHEB RECESSED SURGICAL SUITE



BHCAC, LOW PROFILE RECESSED



BHEM UNDER CABINET



BHEL DIRECT/INDIRECT WALL MOUNT

Whenever possible Behavioral Health fixtures will be vandal and ligature-resistant.



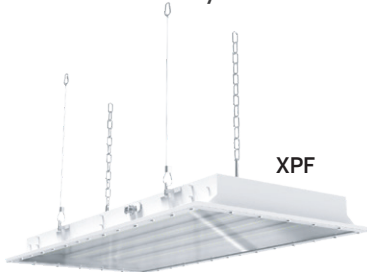
EXPLOSION PROOF



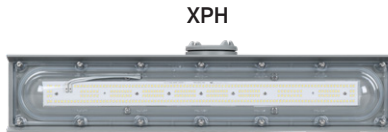
Our EX series of explosion proof LED lights are designed for use in hazardous locations where flammable gases, vapors, or liquids may be present during normal facility operations. Combining style and state-of-the-art technology with the ruggedness and durability of a hazardous location fixture has also lead to higher efficacy for energy savings and lower maintenance costs. Basically, lights like these are not only safe and durable, but highly efficient as well.



XPG



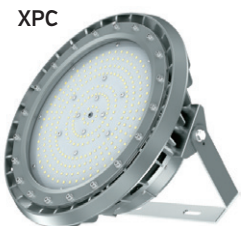
XPF



XPH



XPVT



XPC



XP02



XPEL



XPA



XPE



Transit facilities such as subway tunnels, bus stations and freight facilities have some unique and particular lighting needs. We have a growing category of **TRANSIT** intended fixtures. Basically these are vandal-resistant, durable, wet-location and high-lumen capable.



BABSWM



BASWL

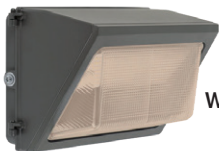
Please check our website under **TRANSITLED** to see more choices.



We carry far too many outdoor lighting fixtures to show them here, but we carry bollards, canopy lights, wall packs, flood lights, shoeboxes, area lights and more.



SB400W
SHOEBOX



GWP
WALLPACK



RBL BOLLARD

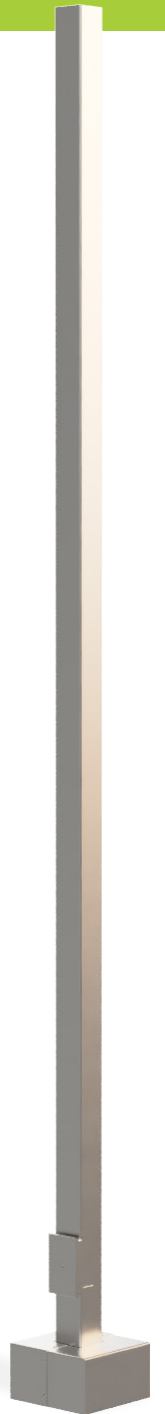
Check our website under **OUTDOOR** or contact us for more options.

STEEL POLES & ACCESSORIES

N2M is proud to introduce a new standard in high-quality steel lighting poles.

American made steel combined with unwavering accuracy and a wide range of drilling and finish options, make N2M poles the perfect choice for your next project. Our BAA compliant poles are an obvious choice over inferior, imported options.

Our Poles are fabricated from hot rolled carbon steel having a minimum yield of 55,000 PSI and conforms to ASTM A572 Grade 55 or A595 Grade A requirements.

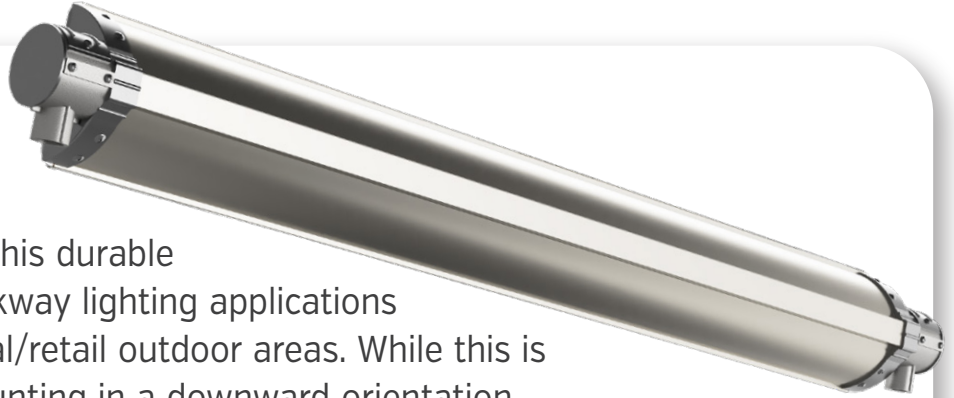


- Straight Square Steel
- Straight Round Steel
- Direct Burial (square and round)
- Tapered Round Steel
- High EPA Poles
- Pole Accessories



NEW DESIGNS & EMERGING CATEGORIES

Our **SLH** Outdoor Sign Lighter is a specification-grade fixture that rotates up to 90°. This durable fixture is ideal for sign and walkway lighting applications such as parking and commercial/retail outdoor areas. While this is was originally designed for mounting in a downward orientation [downlighting], an uplight option is available that includes a door frame. 3/4" hub is standard. There are more uses for a sign lighter than we could ever list here. From inside a coffee shop to the roof of a pancake restaurant, the SLH is a great choice.

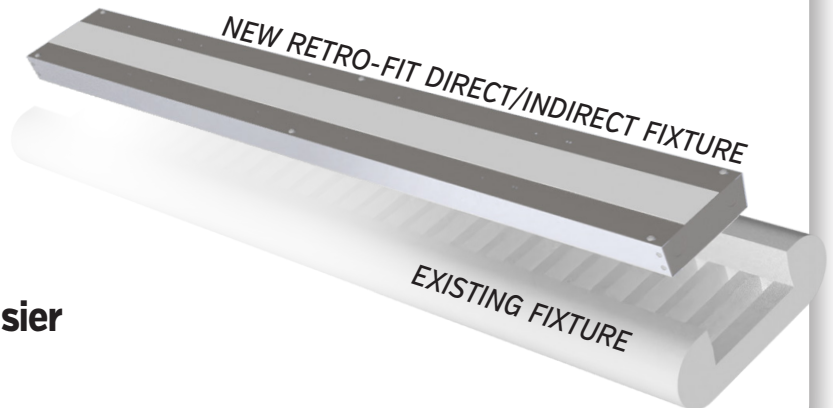


SLH • SIGN LIGHTER

CUSTOM RETROFIT SOLUTIONS

Many local, state, and Federal entities have issued mandates for the phasing out of fluorescent lights. Over the past few years we've designed and shipped scores of RETRO-FIT kits that have made switching to LED an easy task. We've even designed kits that retained existing parabolic louver components and just replaced the center body with a more efficient LED light.

- **Near unlimited options**
- **Easy and trouble-free installations**
- **Custom designed to fit the customers needs**
- **Migrating to LED has never been easier**





When **Neiman Marcus**, the iconic retailer, envisioned bold linear luminaires for their corporate office renovation, they turned to us to build more than a dozen modern and innovative lighting fixtures. Many of these sophisticated designs filled entire ceilings, and a few became the focus of areas within the building. Not only did the lighting industry take notice of our work... so did the media. These were not just lighting fixtures, many are works of art.



CUSTOM LINEAR FIXTURES

ONLY ADVANTAGE COULD DO THIS: One of the most challenging projects we've completed was for the **Trail of Tears Commemorative Park**. Measuring over 90' in linear length and with 114 segments, these linear lights trace the path of the historic Trail of Tears (*and we built two of these!*).



CUSTOM LIGHTING TO SURVIVE THE TOUGHEST ENVIRONMENTS. YOU HAVE COMPLEX NEEDS. WE HAVE SOLUTIONS.



BASTILLE
CORRECTIONAL + VANDAL RESISTANT



CLEANROOM
LED LUMINAIRES



MEDICO
MEDICAL GRADE



BEHAVIORAL HEALTH
+ VANDAL RESISTANT



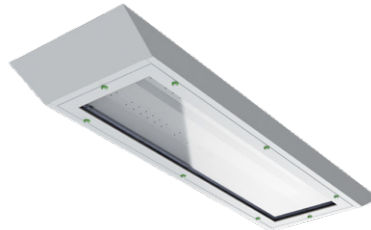
LDL
STEEL LINEAR



XDL
ALUMINUM LINEAR



EX
EXPLOSION PROOF



TransitLED
TRANSPORTATION LIGHTING SOLUTIONS



NEW PRODUCTS



WE ARE COMMITTED TO PRODUCING QUALITY LIGHTING. This commitment is backed up by utilizing the most modern equipment, the best materials available, some of the smartest lighting engineers anywhere, and producing as much of the final product in-house as is possible. And all with US sourced materials. We **MAKE IT HAPPEN!**



301 E. Risinger Rd., Bldg. 109
Fort Worth, TX 76140
817.468.3591

AELNOW.COM

