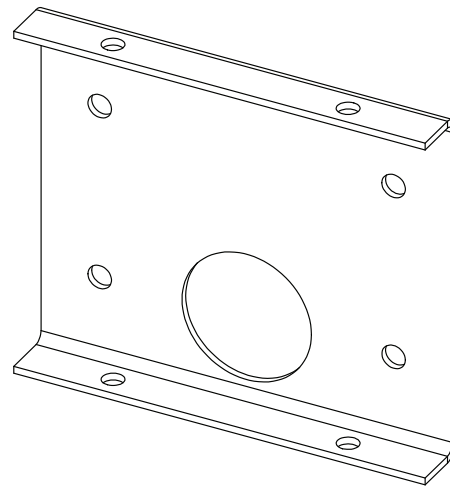
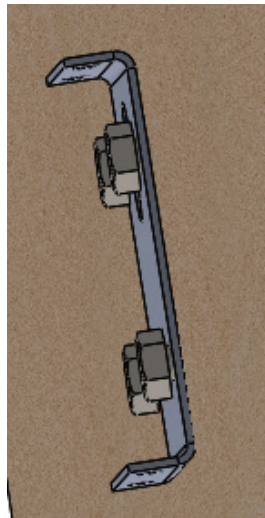
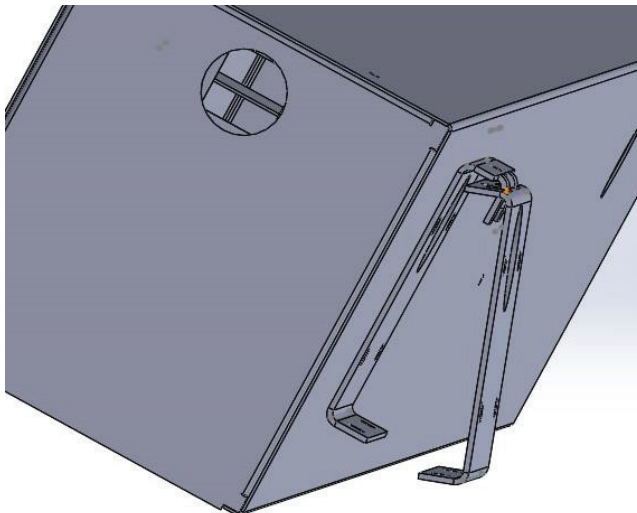


The wall mount bracket consists of two separate pieces. One piece will mount to the wall, while the other will mount to the fixture.

Step 1: Attach the piece with two flat ends to the wall using 4 fasteners.

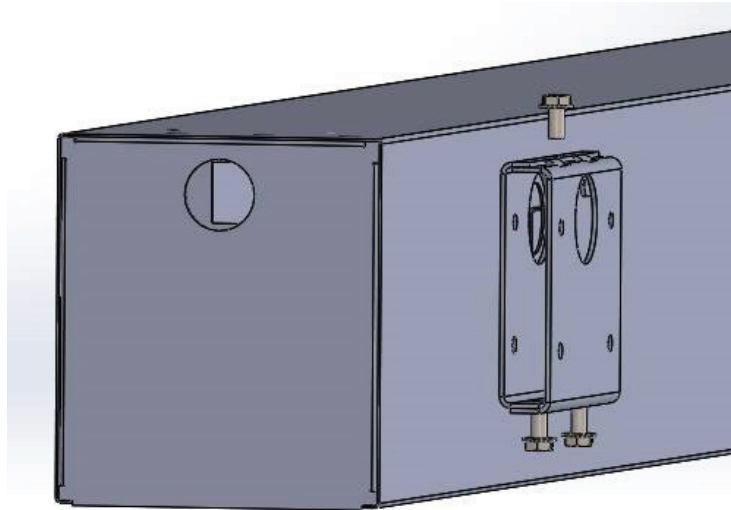


Step 2: Attach the piece with one flat end and prongs to the fixture using 4 fasteners. This allows the piece attached to the fixture to slip over and through the piece attached to the wall, as seen below.



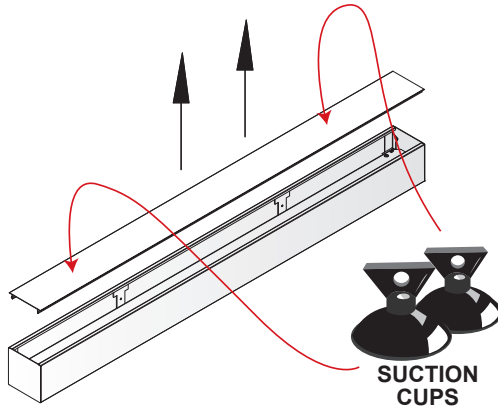
Step 3:

Secure brackets to each other using 3 fasteners. Wall mount installation is completed.

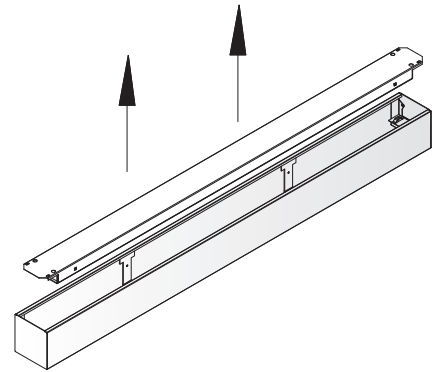


CONTINUOUS RUN INSTRUCTIONS:

**STEP
1**



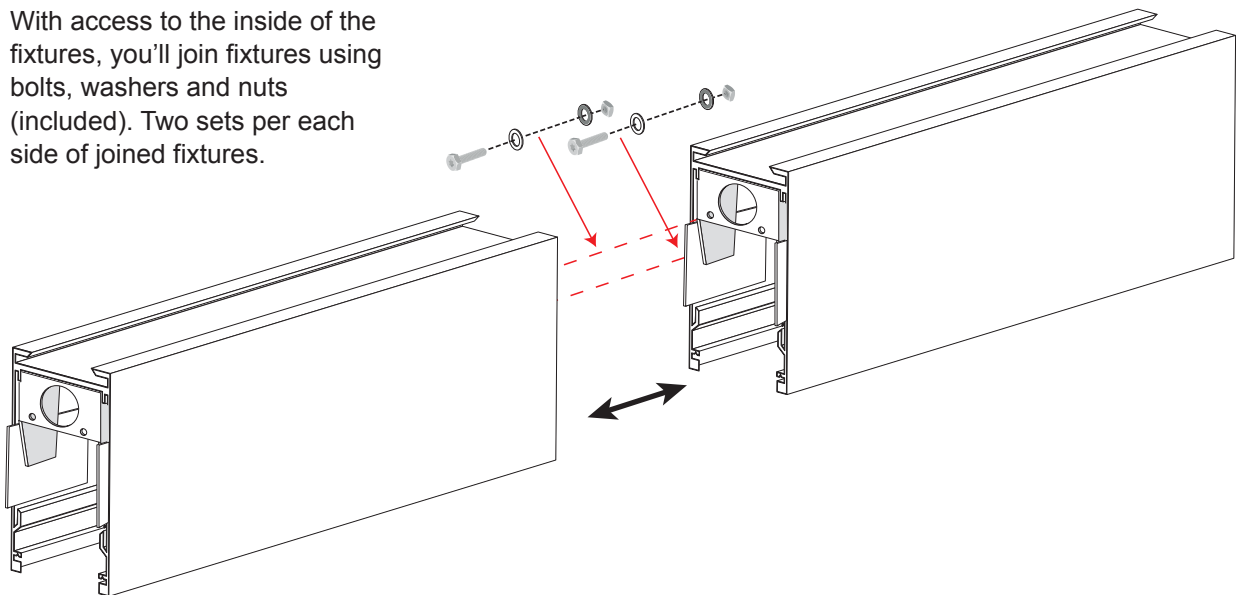
CAUTION: EDGES MAY BE SHARP:
Carefully remove lens from fixture (using provided suction cups) gently un-snapping one side at a time, and set lens aside. Leave the suction cups on the lens.



Remove LED assembly and set aside.

**STEP
2**

With access to the inside of the fixtures, you'll join fixtures using bolts, washers and nuts (included). Two sets per each side of joined fixtures.



CONTINUOUS RUN INSTRUCTIONS:

**STEP
4**

Utilizing included joining plates and included fasteners, secure fixtures to each other.

Set screws bind against adjoining plate

