

CAUTION: THIS PRODUCT MUST BE INSTALLED IN ACCORDANCE WITH THE APPLICABLE INSTALLATION CODE BY A PERSON FAMILIAR WITH THE CONSTRUCTION AND OPERATION OF THE PRODUCT AND THE HAZARDS INVOLVED. SAVE THESE INSTRUCTIONS!



WARNING: Before beginning installation, disconnect electrical power at main switch or circuit breaker.

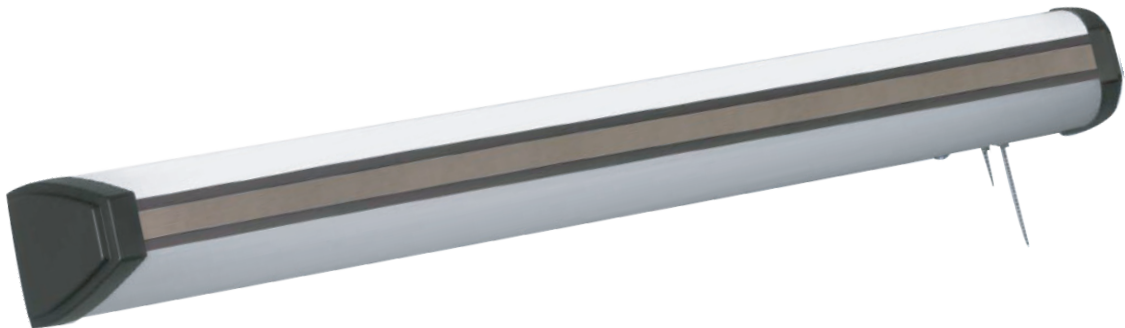
IMPORTANT SAFEGUARDS

Ensure that the electrical wiring conforms to the National Electrical Code NEC® and local regulations if applicable. Installation and servicing of this equipment should be performed by qualified service personnel only. Do not mount near gas or electric heaters. Equipment should be mounted in locations and at heights where it will not readily be subjected to tampering by unauthorized personnel. The use of accessory equipment not recommended by the manufacturer may cause an unsafe condition. Any modification or use of non-original components will void the warranty and product liability. Do not use this equipment for other than intended use.

INSTALLATION INSTRUCTIONS

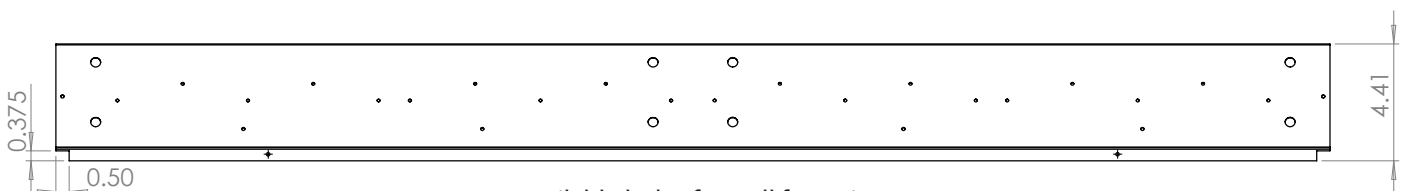


REMINDER: TO AVOID ELECTRIC SHOCK HAZARD, DISCONNECT THE POWER AT THE PANEL BOARD (CIRCUIT BOX) BEFORE BEGINNING INSTALLATION!

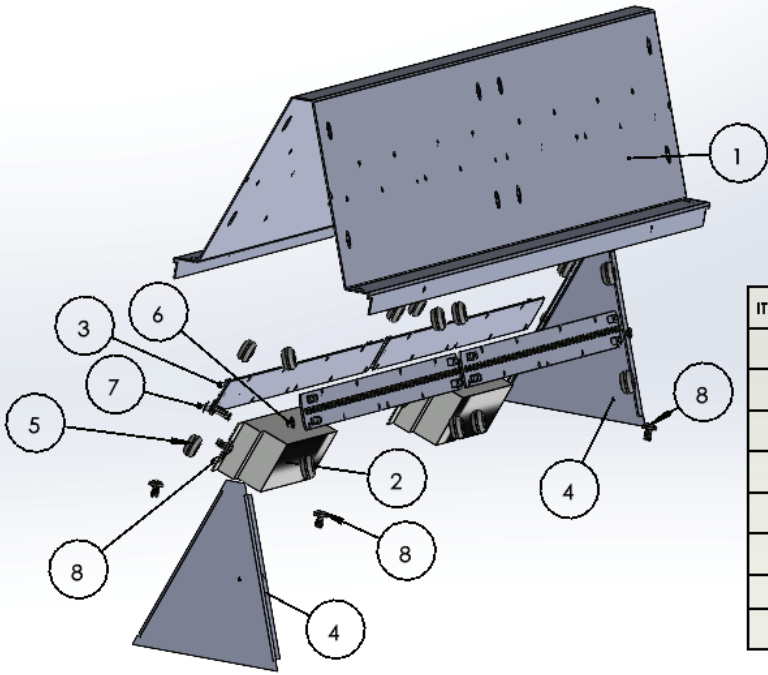


Installation is easy and very straight-forward.

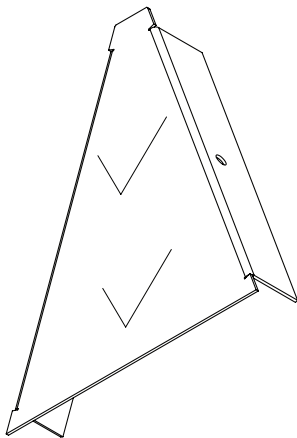
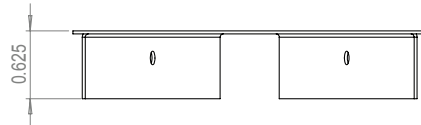
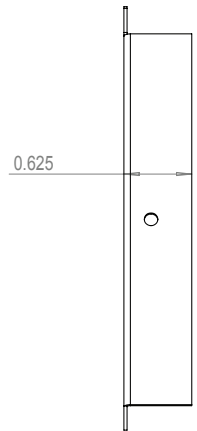
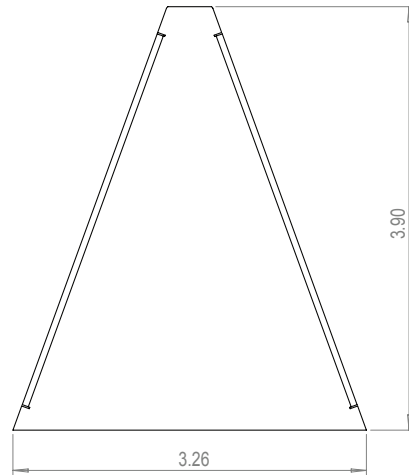
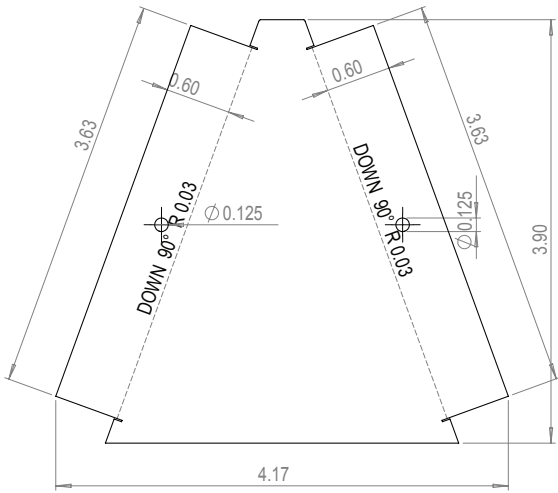
- 1) Remove end caps and lens.
- 2) Remove integrated reflector/driver from backplate (you can leave the driver connected to the electrical leads).
- 3) Affix backplate to wall in your desired location.
- 4) Reassembly in reverse order, and connect leads to your power source



8 available holes for wall fastening



ITEM NO.	LOBDIDCVR4 ASSY	QTY.			
1	LOBDIDCVR4	1			
2	4LTBALLAST	2			
3	M525BOARD	4			
4	LOBDIDEC	2			
5	Z-14RG	16			
6	Z-R18WHITE	4			
7	Z-63238FHFMSFZ1	32			
8	Z-BS	8			



SECURE TO HOUSING BY 1/8" WHITE RIVET ON 2 SIDES