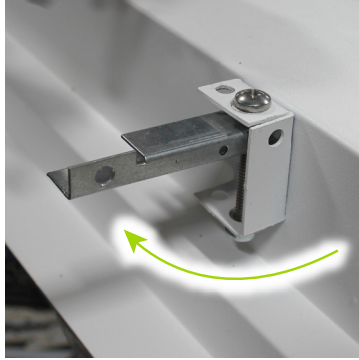
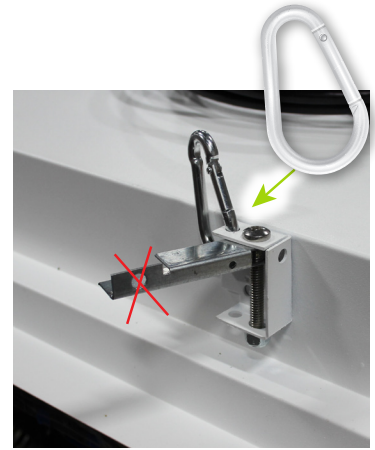




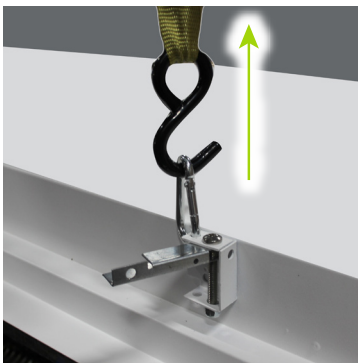
1 Fixture as delivered



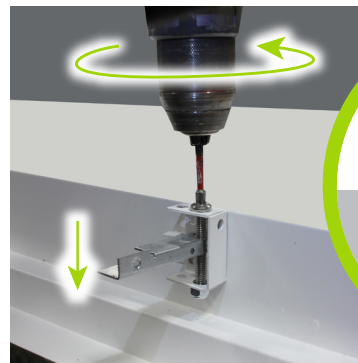
2 Swivel leveling arm outward



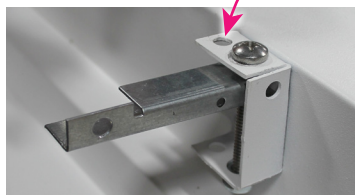
3 Attach carabiner to eyelet hole on bracket welded to case - **NOT TO THE HOLE ONE IN THE LEVELING ARM!**



4 Attach a lifting cord to carabiner and lift unit into place



5 Remove carabiner and cord, rotate bolt to lower leveling arm and secure unit to depth of the ceiling



6 This hole is used for seismic security (client supplied cord or chain)