

LWHB INSTALLATION

*Consult Factory for Dimensions

Consult Specification Sheets for ordering options, construction and performance specifications, dimensional data and listings.



Latch Installation:

1. Slide the dove tails into the housing pock
2. Pop the latch keeper around the housing
3. Push the latch closed



All information is given to our best knowledge and without obligation. We reserve the right to make changes to materials or des



Mounting Strap Installation:

- Mounting Straps Available in 316 Stainless Steel or Zinc Plated High Strength Steel
- LWHB has optional mounting systems:
 - Mounting Strap
 - V-Hook
 - Flexible Ceiling Mount
 - Cable (Provided By Others)
 - Chain (Provided By Others)
 - Mounting Strap with Rigid Mounting Beam
 - Rigid Ceiling Mount
 - Dual Pendant Mount (Provided By Others)



LWHB INSTALLATION

Hook Installation:

316 Stainless Steel V-hook.
UL rated for 4X fixture weight.
Maximum fixture weight of 23lbs.



Cable Mount Installation:

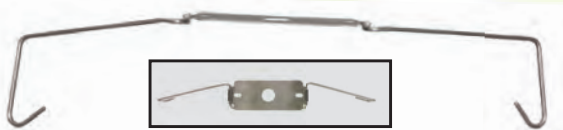


Supplied by Others



Flexible Ceiling Mount

Installation: 316 Stainless Steel Ceiling Mount attaches directly to the ceiling.

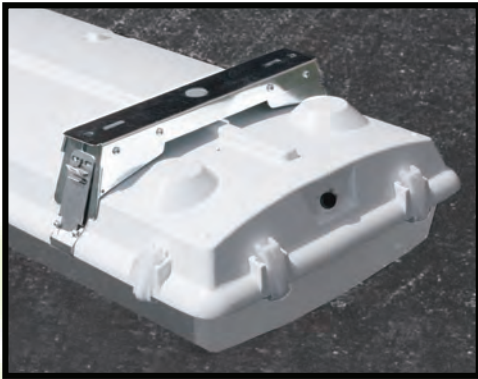


1.25" Between Ceiling and Enclosure

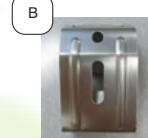
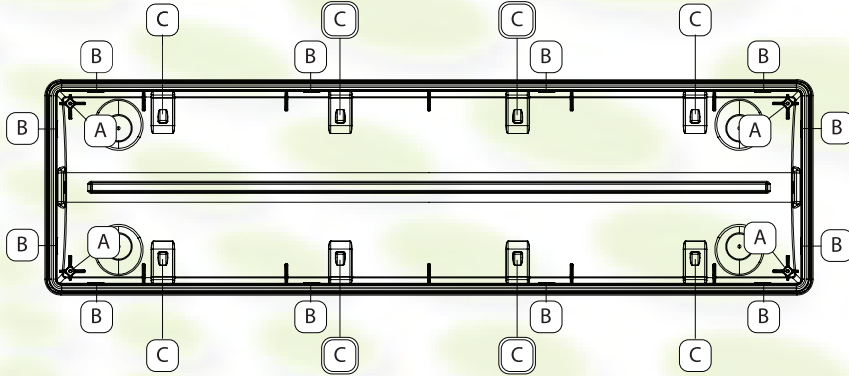
LWHB INSTALLATION

Rigid Mounting Beam Installation:

- Patented
- 316 Stainless Steel or Zinc Plated HSLA



Hardware Placement:



C Optional Spacing

LWHB INSTALLATION

Certifications:

UL

NSF

NEMA 4X

IP65

IP66

IP67

RoHS

PSI 1500

SLP Guardian Seal

Patented



UL Listing (FLR): File E319249
UL Listing (LED): File E363909
UL Recognized Components: File E215168
Components Tested and Certified
by NSF International

NEMA 4X



Offers 34% more contact between the lens and the gasket is a unique combination of our Injection Molded lens features and high performance "poured in place" gasket. This provides the most advanced sealing system available.

