

# Advantage Environmental Lighting



**MEDICO** 





# MEA

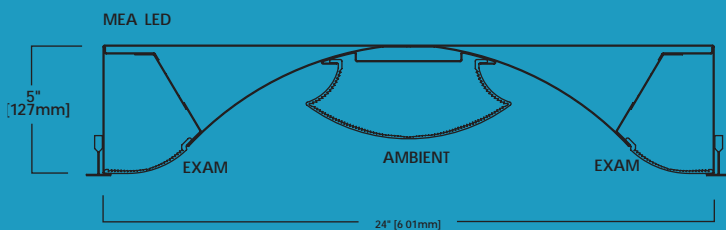
## DESCRIPTION

MEA offers both exam and ambient lighting all in one fixture. The MEA LED features innovative optical technology which provides powerful, focused illumination for examinations. It's exemplary design directs the light onto the bed and provides glare-free illumination for both the medical professional and patient. This ergonomical styled design helps bring a relaxed, comfortable feel to any patient room.

STANDARD | OPTIONAL



## Dimensions



# MEB

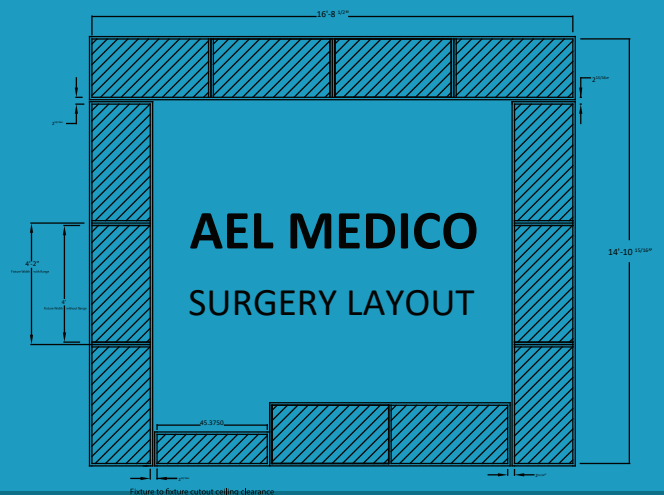
## DESCRIPTION

The MEB provides a supplemental, asymmetric/symmetric lighting solution in the operating room. MEB is available in 1x4, 2x2, and 2x4 sizes, and it is typically positioned around the perimeter of the operating room. The MEB is IP66 compliant, wet location listed, MILSTD 461G available, NSF listed, anti-microbial matte white finish, Red and Green LED's, and is the perfect choice in the operating room surgical suite.

STANDARD | OPTIONAL



## Surgery Room Layout



# WARRANTY

**5 - Year Limited Warranty. Complete warranty and terms located at:**  
[www.aelnow.com/warranty](http://www.aelnow.com/warranty)



# MEC

## DESCRIPTION

The fully enclosed MEC offers ambient and/or examination lighting, dimmable to the appropriate lighting levels for either occasions. The small aperture MEC is flush to the ceiling line, allowing quick, easy, as well as effective wipe-down. Separately switched ambient and exam functions provide the ability to accommodate the many necessary activities performed in the patient room. Specify the nightlight for an additional function. Typically used in pairs, and positioned along both sides of the bed, the MEC offers glare and shadow free illumination. Specify the LED reading and/or chart light for an additional function in the patient room.



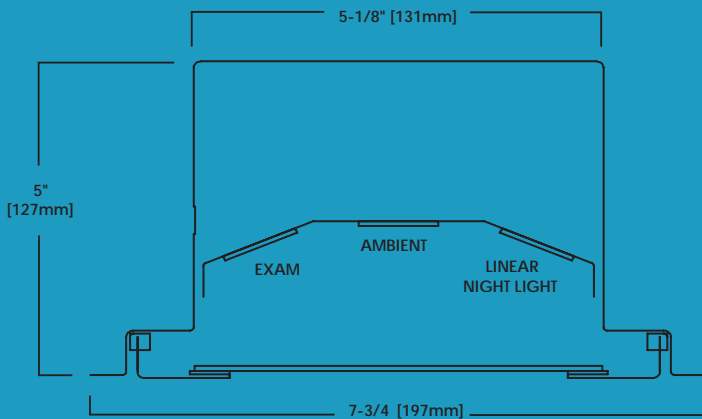
# MEE

## DESCRIPTION

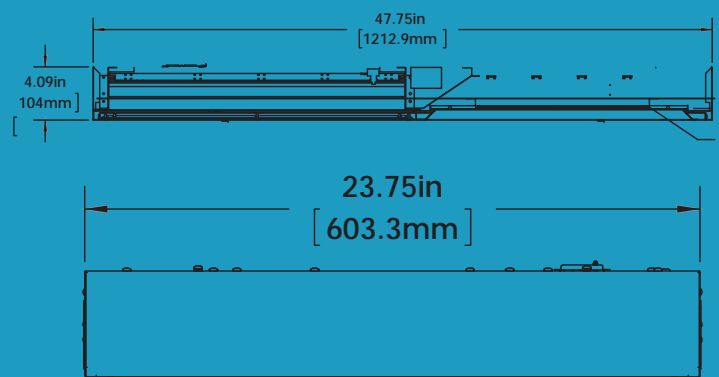
The MEE series is a combination of both ambient and exam light for hospitals, nursing homes and other patient care facilities. As an IC-rated specification-grade luminaire which provides a cost-effective LED patient room lighting solution. Eliminates the need for wall mounted luminaires. The flexibility of the nominal 2' x 4' singular modular installation makes this an excellent ceiling-mount fixture. For use in insulated ceilings.



## Dimensions



## Dimensions



# WARRANTY

5 - Year Limited Warranty. Complete warranty and terms located at:  
[www.aelnow.com/warranty](http://www.aelnow.com/warranty)





# MEF24

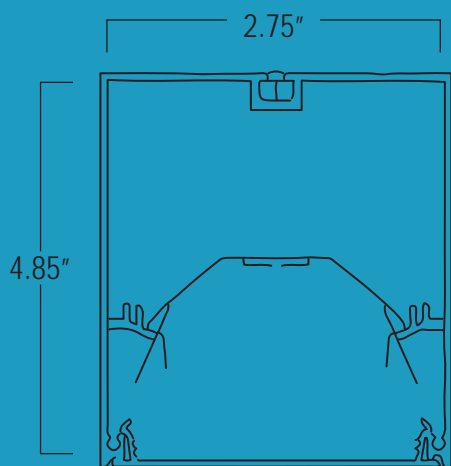
## DESCRIPTION

The MEF24 is an architecturally designed Surface Mount Direct Aluminum LED Luminaire that is classically styled and fit for any interior. It is available for continuous run mounting.

APPLICATIONS: The MEF24 Series of Surface Mount Direct Aluminum LED Luminaires were designed to be high quality, energy efficient LED fixtures for use in commercial applications, offices, hotel lobbies, museums, government facilities, schools, and public areas.



## Dimensions



# MEF4

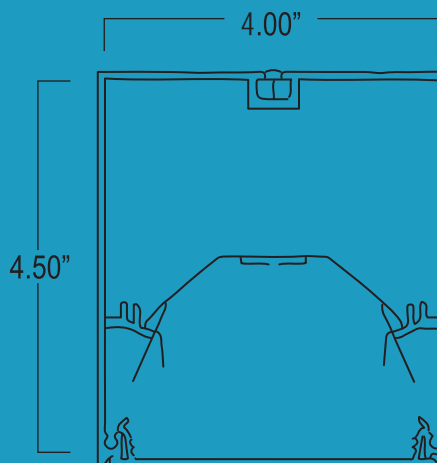
## DESCRIPTION

The MEF4 is an architecturally designed Surface Mount Direct Aluminum LED Luminaire that is classically styled and fit for any interior. It is available for continuous run mounting.

APPLICATIONS: The MEF4 Series of Surface Mount Direct Aluminum LED Luminaires were designed to be high quality, energy efficient LED fixtures for use in commercial applications, offices, hotel lobbies, museums, government facilities, schools, and public areas.



## Dimensions



# WARRANTY

**5 - Year Limited Warranty. Complete warranty and terms located at:**  
**[www.aelnor.com/warranty](http://www.aelnor.com/warranty)**



# MWHB

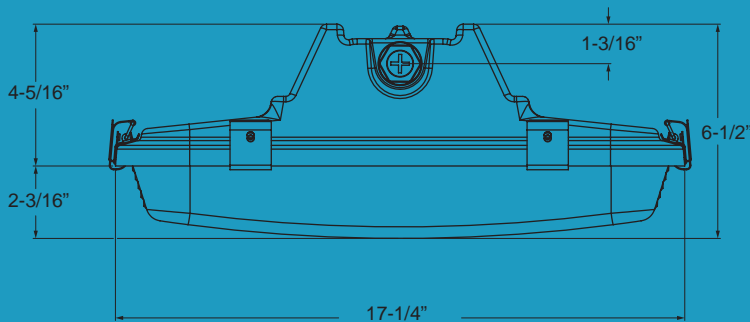
## DESCRIPTION

The MWHB Series is an IP Rated Wash Down LED High Bay luminaire. It boasts a gasketed enclosure that is completely dust and moisture resistant. The MWHB utilizes state-of-the-art LED technology to deliver the highest possible efficiency in the lighting industry.

APPLICATIONS: The MWHB Series of Wash Down LED High Bays were designed to be high quality, energy efficient fixtures. Suitable for both indoor and outdoor applications.



## Dimensions



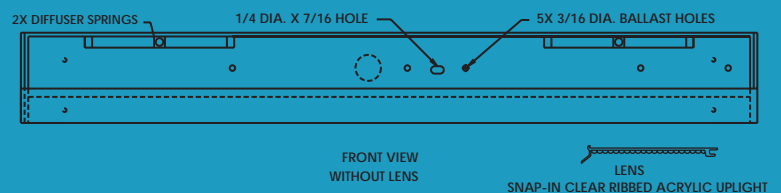
# MEH

## DESCRIPTION

The MEH Series is an LED Wall/Vanity fixture available with Uplight, Downlight and Front Light configurations. It is available with multiple lens and finish options. The MEH Series of LED Wall/Vanity fixtures are designed to be high quality, energy efficient LED fixtures for use in corridors, closets, stairwells and bathrooms.



## Dimensions



# WARRANTY

**5 - Year Limited Warranty. Complete warranty and terms located at:**  
[www.aelnor.com/warranty](http://www.aelnor.com/warranty)



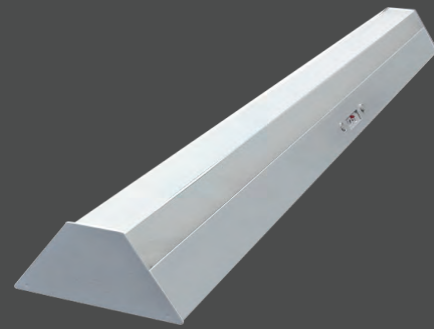
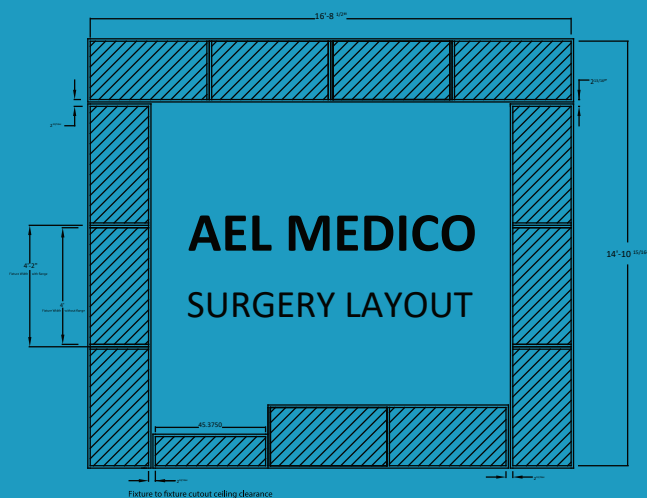
# MEI

## DESCRIPTION

The Surface Mount MEI provides a supplemental, asymmetric/symmetric lighting solution in the operating room. MEI is available in 1x4, 2x2, and 2x4 sizes, and it is typically positioned around the perimeter of the operating room. The MEI is IP66 compliant, wet location listed, MILSTD 461G available, NSF listed, anti-microbial matte white finish, Red or Green LED's, and is the perfect choice in the operating room surgical suite.



## Surgery Room Layout



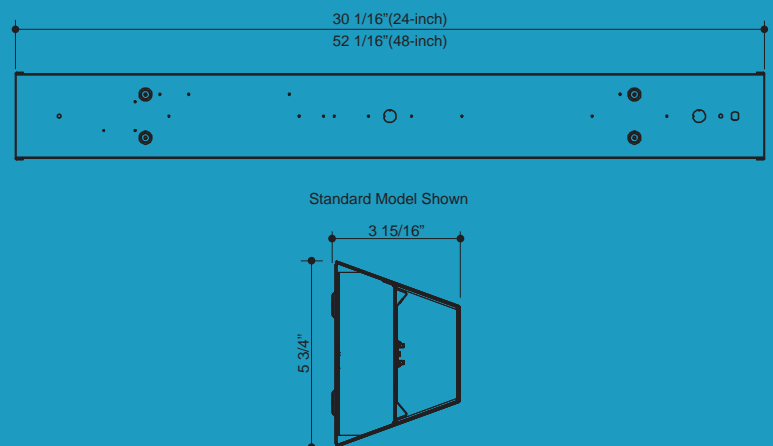
# MEJ

## DESCRIPTION

The MEJ is a low-profile, architecturally designed wall-mounted luminaire built to meet the demands of today's healthcare facilities. The MEJ provides optimal ambient light due to its specially designed optics. The MEJ LED is designed for use in healthcare facilities, specially for use in patient rooms to facilitate all tasks required by both patient and medical professional.

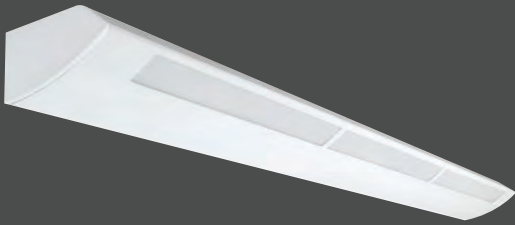


## Dimensions



# WARRANTY

**5 - Year Limited Warranty. Complete warranty and terms located at:**  
[www.aelnow.com/warranty](http://www.aelnow.com/warranty)



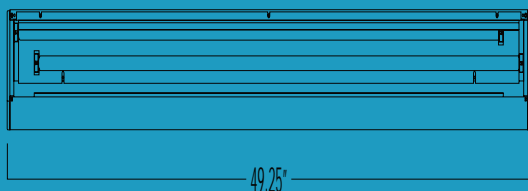
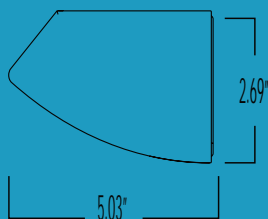
# MEK

## DESCRIPTION

The MEK Series is a Slotted LED Wall Mount Linear Fixture and is a classically styled fixture fit for any interior. It is available for continuous run mounting. Driven by performance and a clean aesthetic, the MEK series represents the ultimate in simplicity; a narrow, uniform line of light. Constructed with premium materials with industry leading technology, the MEK Series is available in configurable runs. The MEK Series integrates seamlessly with today's modern building management systems. The MEK Series allows architects to experiment with their designs without exceeding ever decreasing energy budgets.



## Dimensions

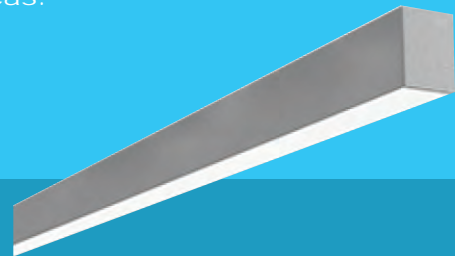


# MEF4DA

## DESCRIPTION

The MEF4DA Series is an architecturally designed Suspended Direct Aluminum LED Luminaire that is classically styled and fit for any interior. It is available for continuous run mounting.

APPLICATIONS: The MEF4DA Series of Suspended Direct Aluminum luminaires are designed to be high quality, energy efficient LED fixtures for use in commercial applications, offices, hotel lobbies, museums, government facilities, schools, and public areas.



# MEF24DA

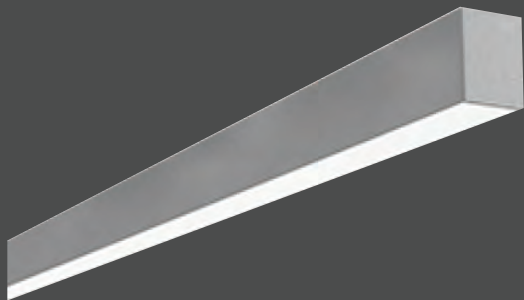
## DESCRIPTION

The MEF24DA Series is an architecturally designed Suspended Direct Aluminum LED Luminaire that is classically styled and fit for any interior. It is available for continuous run mounting.

APPLICATIONS: The MEF24DA Series of Suspended Direct Aluminum luminaires were designed to be high quality, energy efficient LED fixtures for use in commercial applications, offices, hotel lobbies, museums, government facilities, schools, and public areas.

# WARRANTY

**5 - Year Limited Warranty. Complete warranty and terms located at:**  
**[www.aelnor.com/warranty](http://www.aelnor.com/warranty)**



# MEF4DIDA

## DESCRIPTION

The MEF4DIDA Series is an architecturally designed Suspended Mount Direct/Indirect Aluminum LED Luminaire that is classically styled and fit for any interior. It is available for continuous run mounting.

APPLICATIONS: The MEF4DIDA Series of Suspended Mount Direct/Indirect Aluminum LED Luminaires are designed to be high quality, energy efficient LED fixtures for use in commercial applications, offices, hotel lobbies, museums, government facilities, schools, and public areas.

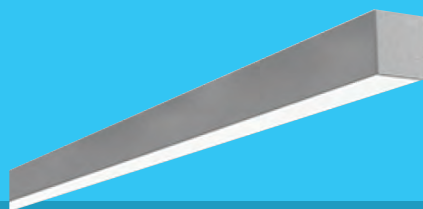


# MEF24DIDA

## DESCRIPTION

The MEF24DIDA Series is an architecturally designed Suspended Mount Direct/Indirect Aluminum LED Luminaire that is classically styled and fit for any interior. It is available for continuous run mounting.

APPLICATIONS: The MEF24DIDA Series of Suspended Mount Direct/Indirect Aluminum LED Luminaires were designed to be high quality, energy efficient LED fixtures for use in commercial applications, offices, hotel lobbies, museums, government facilities, schools, and public areas.

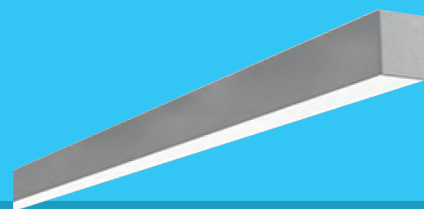


# MEF4RS

## DESCRIPTION

The MEF4RS Series is an architecturally designed Recessed Steel LED Luminaire that is classically styled and fit for any interior. It is available for continuous run mounting.

APPLICATIONS: The MEF4RS Series of Recessed Steel Luminaires are designed to be high quality, energy efficient LED fixtures for use in commercial applications, offices, hotel lobbies, museums, government facilities, schools, and public areas.



# MEF24RS

## DESCRIPTION

The MEF24RS Series is an architecturally designed Recessed Steel LED Luminaire that is classically styled and fit for any interior. It is available for continuous run mounting.

APPLICATIONS: The MEF24RS Series of Recessed Steel Luminaires are designed to be high quality, energy efficient LED fixtures for use in commercial applications, offices, hotel lobbies, museums, government facilities, schools, and public areas.

# WARRANTY

**5 - Year Limited Warranty. Complete warranty and terms located at:**  
**[www.aelnow.com/warranty](http://www.aelnow.com/warranty)**



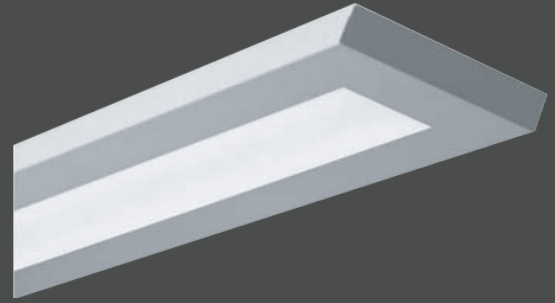


# MEF22DS

## DESCRIPTION

The MEF22DS Series is an architecturally designed Suspended Direct Steel LED Luminaire that is classically styled and fit for any interior. It is available for continuous run mounting.

APPLICATIONS: The MEF22DS Series of Suspended Direct Steel Luminaires were designed to be high quality, energy efficient LED fixtures for use in commercial applications, offices, hotel lobbies, museums, government facilities, schools, and public areas.

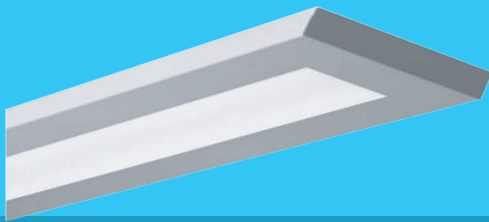


# MSQLD

## DESCRIPTION

The MSQLD Series is an LED Pendant Mount Linear fixture available for stand-alone or continuous run applications.

APPLICATIONS: The MSQLD Series were designed to be high quality, energy efficient LED fixtures for use in corridors, offices, government facilities, schools, and public areas.

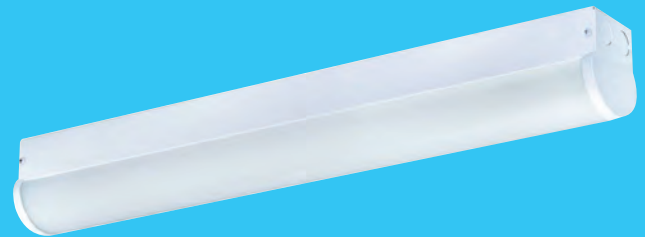


# MSQLDID

## DESCRIPTION

The MSQLDID Series is an LED Pendant Mount Linear fixture available for stand-alone or continuous run applications. The MSQLDID provides both direct and indirect lighting.

APPLICATIONS: The MSQLDID Series were designed to be high quality, energy efficient LED fixtures for use in corridors, offices, government facilities, schools, and public areas.



# MSCDR

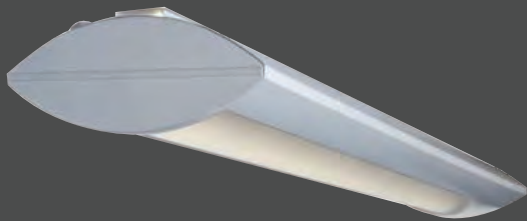
## DESCRIPTION

The MSCDR LED Covered Strip Luminaire is designed to deliver general, ambient lighting in a variety of settings. The MSCDR has a high-efficacy, which provides long life and uniform illumination. The versatility of our MSCDR ensures it is the perfect choice for both new construction and retrofit applications.

APPLICATIONS: The MSCDR Covered Strip Luminaires are designed to be high quality, energy efficient LED fixtures for use in schools, office spaces, hospitals, commercial and retail spaces.

# WARRANTY

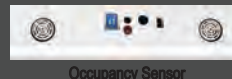
**5 - Year Limited Warranty. Complete warranty and terms located at:**  
**[www.aelnow.com/warranty](http://www.aelnow.com/warranty)**



# MSRDID

## DESCRIPTION

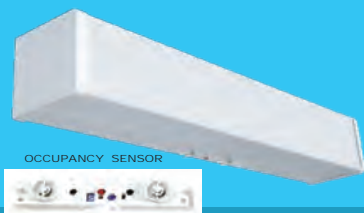
The MSRDID Series is an architecturally designed Suspended Mount Direct/Indirect Steel LED Luminaire that is classically styled and fit for any interior. It is available for continuous run mounting. APPLICATIONS: The MSRDID Series of Suspended Mount Direct/Indirect Steel LED Luminaires are designed to be high quality, energy efficient LED fixtures for use in commercial applications, offices, hotel lobbies, museums, government facilities, schools, and public areas.



# MSWV07

## DESCRIPTION

The MSWV07 Series is a Stairwell LED Luminaire with an occupancy sensor and smooth white acrylic diffuser. APPLICATIONS: The MSWV07 Series of LED Stairwell fixtures are designed to be high quality, energy efficient LED fixtures for use in corridors, stairwells, etc.



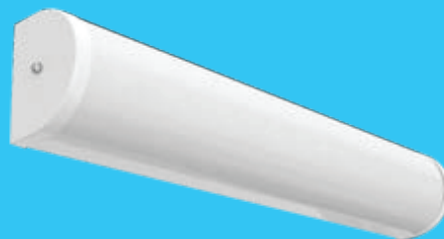
OCCUPANCY SENSOR

# MSWV13

## DESCRIPTION

The MSWV13 Series is a LED Stairwell with Sensor fixture. It is available with multiple lens and finish options, utilizing the occupancy sensor to sense motion within a space. It will automatically turn on lights even when the sensor has no direct line of sight to occupants. After the area becomes unpopulated and the time delay has passed, the sensors will automatically turn the lights off.

APPLICATIONS: The MSWV13 Series of LED Stairwell with Sensor fixtures were designed to be high quality, energy efficient LED fixtures for use in hallways and corridors, stairwells, closets, and bathrooms.



# MWV07

## DESCRIPTION

The MWV07 Series is a Wall/Vanity LED Luminaire with a smooth white acrylic diffuser. APPLICATIONS: The MWV07 Series of LED Wall/Vanity fixtures are designed to be high quality, energy efficient LED fixtures for use in corridors, stairwells, bathrooms, etc.

# WARRANTY

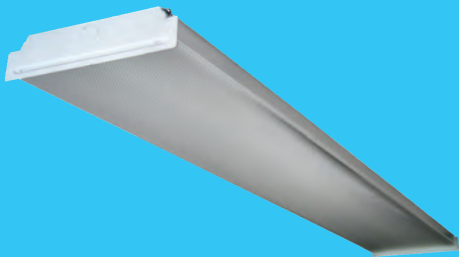
**5 - Year Limited Warranty. Complete warranty and terms located at: [www.aelnow.com/warranty](http://www.aelnow.com/warranty)**



# MWV13

## DESCRIPTION

The MWV13 Series is an LED Wall/Vanity is available with multiple lens and finish options. APPLICATIONS: The MWV13 Series of LED Wall/Vanity fixtures were designed to be high quality, energy efficient LED fixtures for use in wall or ceiling corridors, stairwells and bathrooms.



# MLVT

## DESCRIPTION

The MLVT Series is a Commercial Grade LED Vapor Tight, gasketed enclosure that is completely dust and moisture resistant. The MLVT utilizes state-of-the-art LED technology to deliver the highest possible efficiency in the lighting industry. APPLICATIONS: The MLVT Series of LED Vapor Tights were designed to be high quality, energy efficient LED fixtures for use in food processing facilities, kitchens, parking garages, canopy, stair well car washes, government facilities, schools, public areas and industrial facilities. Suitable for both indoor and outdoor applications.

# MLWA

## DESCRIPTION

The MLWA Series is a 7" LED Wrap available in 2' or 4' body lengths. It is a low-profile, narrow wrap that is designed for surface mounting applications. The MLWA utilizes state-of-the-art LED technology to deliver the highest possible efficiency in the lighting industry.

APPLICATIONS: The MLWA Series of LED Wraps are designed to be high quality, energy efficient

# WARRANTY

**5 - Year Limited Warranty. Complete warranty and terms located at:**  
**[www.aelnow.com/warranty](http://www.aelnow.com/warranty)**



# Advantage Environmental Lighting

# MEDICO

**CONTACT YOUR LOCAL  
REPRESENTATIVE FOR PRICING**

