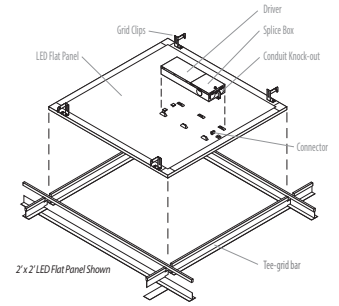


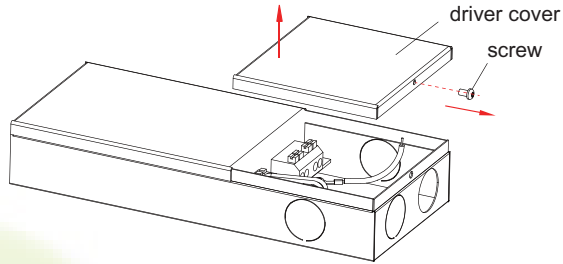
C SERIES INSTALLATION

*Consult Factory for Dimensions

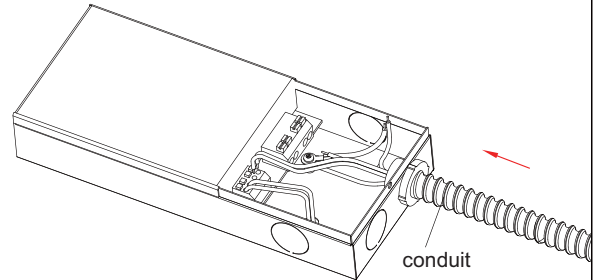
Consult Specification Sheets for ordering options, construction and performance specifications, dimensional data and listings.



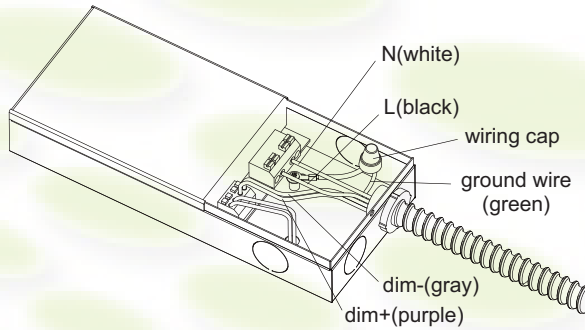
1. Unscrew the driver cover.



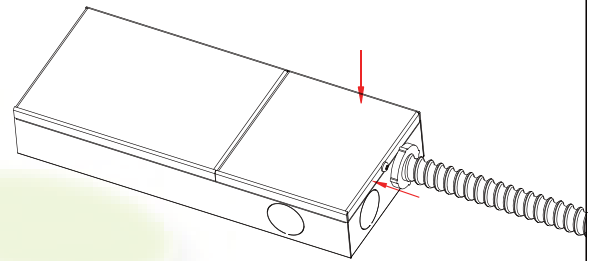
2. Connect the conduit to the driver box.



3. Connect other wires separately.

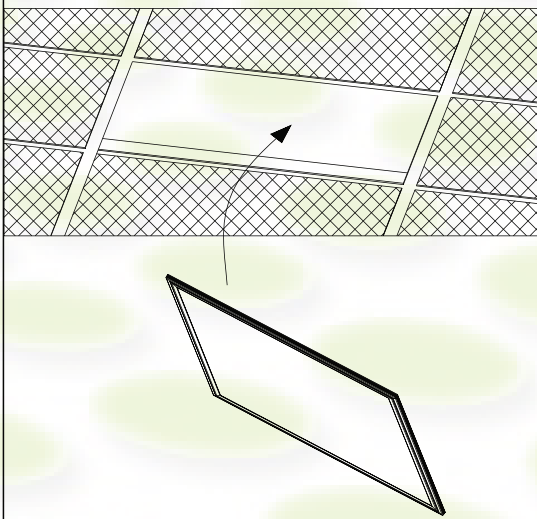


4. Put back the driver cover and fix it by screw.

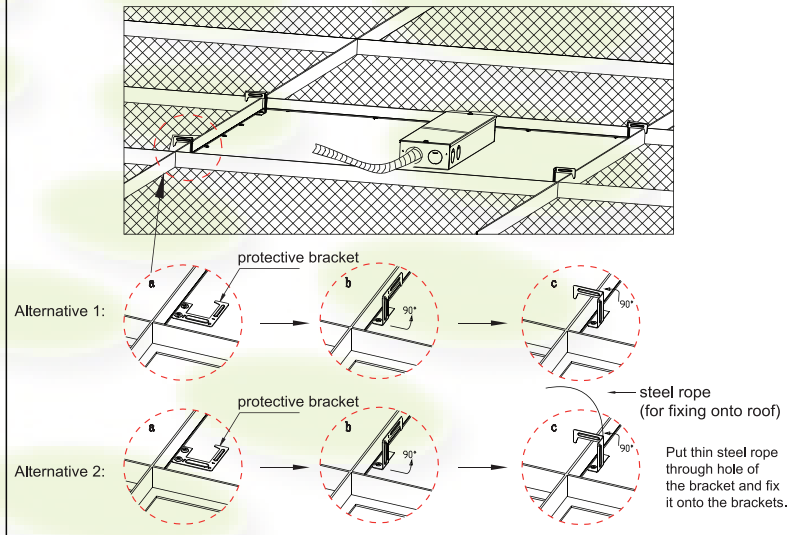


Recessed Installation

1. Replace existing lighting fixture from ceiling with LED Panel.

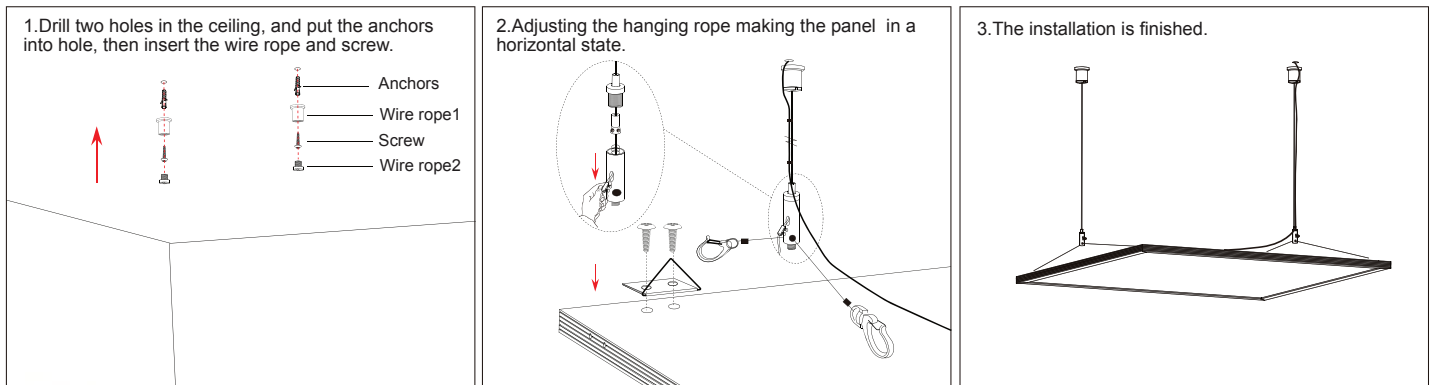


2. Use the protective brackets for the sake of safety.



C SERIES INSTALLATION

Suspension kit Installation



Note: 2*2ft: 2 pcs suspension kits needed for installation. 1*4ft: 3pcs suspension kits needed for installation.

Warning

- * LED Panels are not suitable for using in wet locations
- * Please keep the LED Panel away from any corrosive substance, and please use dry cloth when you clean it
- * LED Panel can only be installed by a qualified electrician.
- * Before installation or maintenance, please disconnect the power to prevent electric shock.

(Note: Suspending installation method is not suitable to be used for products with dimensions of 1212*603mm.)