

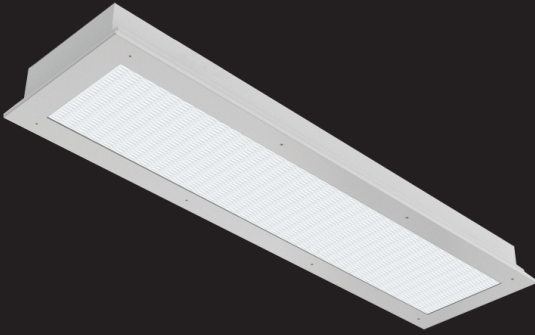


BASTILLE

PRISON GRADE



BAA



STANDARD



OPTIONAL



BAB



STANDARD



OPTIONAL



DESCRIPTION

The BAA provides a supplemental, asymmetric/symmetric lighting solution. The BAA is available in 1x2, 1x4, 2x2 and 2x4 sizes. The BAA is IP66 compliant, wet location listed standard, MILSTD 461G available, NSF listed, anti-microbial matte white finish.

HOUSING

Die formed, seam welded, and ground smooth (specify material and gauge). Incorporates a removable reflector unitized with all electrical components for easy installation and maintenance. Die formed one-piece frame with tightly closed corners. (STAINLESS STEEL AVAILABLE)

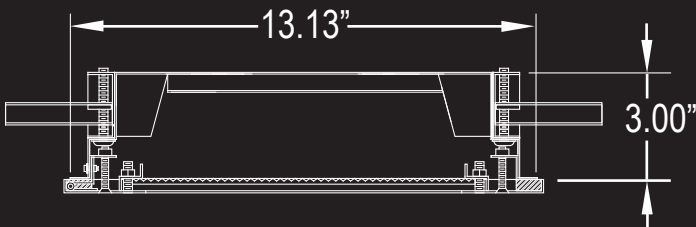
ELECTRICAL

624 nm Red or 527 nm Green LED light source. Electrical components mounted to removable high impact, injection molded polycarbonate chassis.

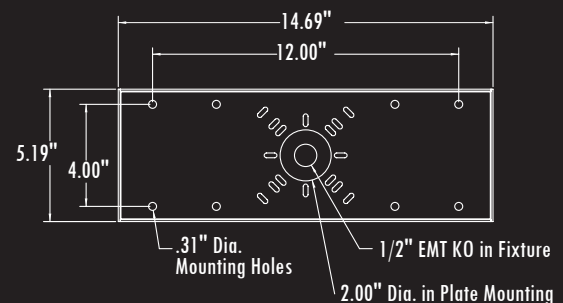
HOUSING

One-piece die-formed prime 14-gauge grade material as specified — see ordering information. Corners continuously seam welded and smooth with no post grinding (TIG). (STAINLESS STEEL AVAILABLE)

DIMENSIONS



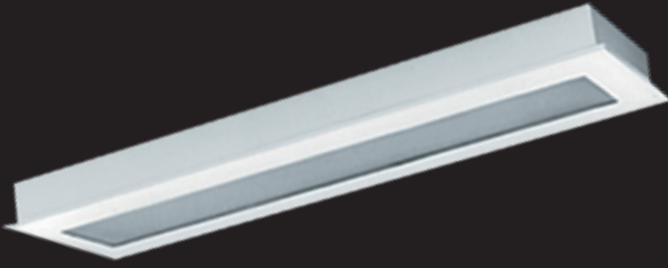
DIMENSIONS



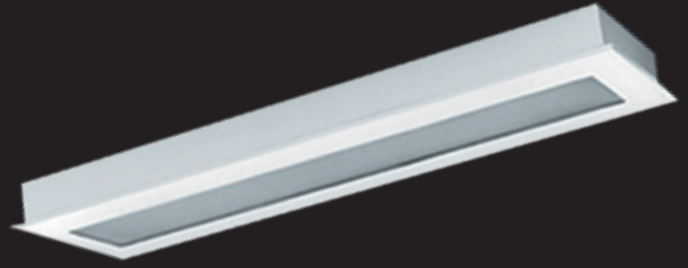
WARRANTY

5 - Year Limited Warranty. Complete warranty and terms located at: www.aelnor.com/warranty

BAC



BAD



STANDARD

OPTIONAL



STANDARD

OPTIONAL



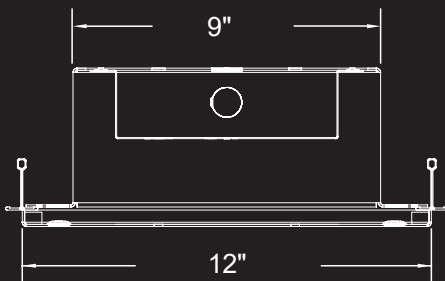
DESCRIPTION

The BAC combines maximum security construction features with energy saving technology. The BAC is available in 1x1, 1x2, 1x4, 2x2 and 2x4 sizes. The BAC utilizes a one-piece overlapping door frame, security lensing and tamper-resistant fasteners for maximum impact-resistance to prevent contraband concealment and unwanted fixture penetration.

HOUSING

Die-formed CRS body with welded corners to form a one-piece housing which prevents contraband concealment and unwanted fixture penetration. (STAINLESS STEEL AVAILABLE)

DIMENSIONS



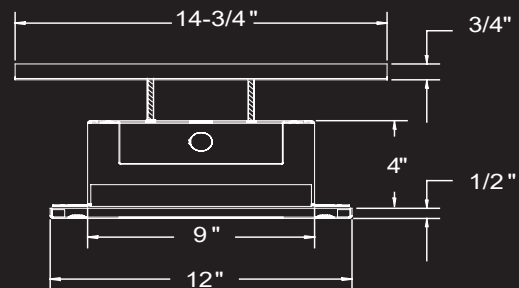
DESCRIPTION

The BAD combines maximum security construction features with energy saving technology. The BAD is available in 1x1, 1x2, 1x4, 2x2 and 2x4 sizes. This Recessed Flange luminaire utilizes a one-piece overlapping door frame, security lensing and tamper-resistant fasteners for maximum impact-resistance to prevent unwanted fixture penetration. UL listed for damp locations.

HOUSING

Die-formed CRS body with welded corners to form a one-piece housing which prevents contraband concealment and unauthorized fixture penetration. (STAINLESS STEEL AVAILABLE)

DIMENSIONS



WARRANTY

5 - Year Limited Warranty. Complete warranty and terms located at: www.aelnor.com/warranty

BAE



STANDARD



OPTIONAL



BAF



STANDARD



OPTIONAL



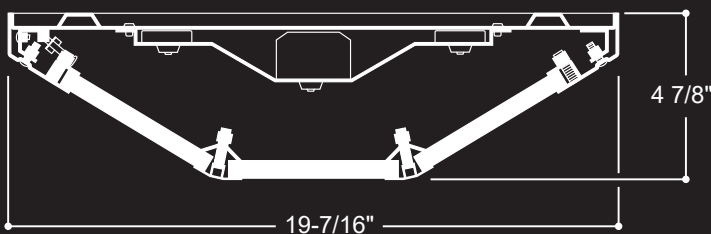
DESCRIPTION

The BAE can be both ceiling- or wall-mounted. This low profile 2' or 4', surface-mounted luminaire with clamshell housing, security lensing and tamper resistant fasteners is designed for maximum impact resistance to prevent contraband concealment and unwanted fixture penetration. UL/cUL listed for damp locations.

HOUSING

CRS body with continuous welded and ground ends to form a one-piece, seamless, doorless housing which prevents contraband concealment, and unwanted fixture penetration. Clamshell design combines die-formed 12, 14, or 16 ga. (STAINLESS STEEL AVAILABLE)

DIMENSIONS



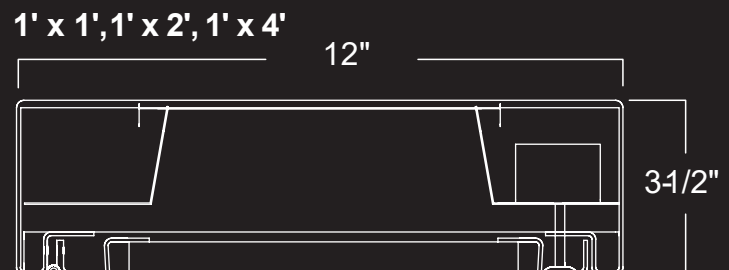
DESCRIPTION

The BAF combines maximum security construction features with energy saving technology. BAF is available in 1x1, 1x2, 1x4, 2x2 and 2x4 sizes. This surface mounted luminaire utilizes a one-piece housing, security lensing and tamper-resistant fasteners to prevent contraband concealment and unauthorized fixture penetration.

HOUSING

Die-formed 12-18 ga. CRS body with continuous welded and ground ends to form a one piece, seamless housing for maximum impact resistance and prevention of unauthorized fixture penetration. (STAINLESS STEEL AVAILABLE)

DIMENSIONS



WARRANTY

5 - Year Limited Warranty. Complete warranty and terms located at: www.aelnor.com/warranty

BAG



STANDARD



OPTIONAL



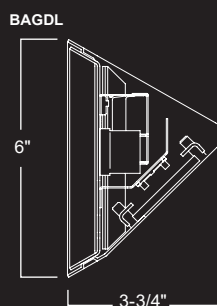
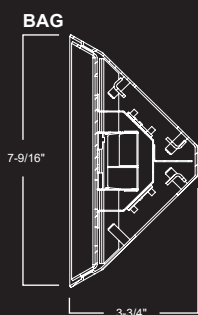
DESCRIPTION

The BAG (up/down) and BAGDL (down only) wall or ceiling fixture combines security features along with diminutive size. Less than 4" deep, a back-pan combined with a one-piece housing maximizes impact resistance and prevents unwanted fixture penetration. Body length's available in 18", 2', 3' and 4'.

HOUSING/BACKPAN

Housing is attached to the backpan with tamper resistant screws. Dedicated backpan mounts with multi-point mounting. Stainless steel safety cables secure housing to the backpan. (STAINLESS STEEL AVAILABLE)

DIMENSIONS



BAH



STANDARD



OPTIONAL



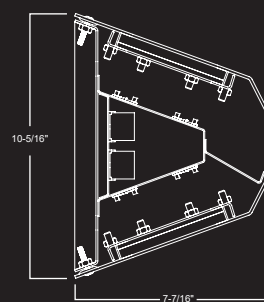
DESCRIPTION

The BAH utilizes one piece clamshell housing as well as security lensing and tamper resistant fasteners for impact resistance to prevent contraband concealment and unwanted fixture penetration. The BAH is ideal for confinement/security applications. Body length's available in 2' and 4'.

HOUSING

Clamshell design combines die-formed steel body with continuous welded and ground ends to form a one-piece, seamless, doorless housing. Two stainless-steel aircraft cables attach housing to back plate. (STAINLESS STEEL AVAILABLE)

DIMENSIONS



WARRANTY

5 - Year Limited Warranty. Complete warranty and terms located at: www.aelnor.com/warranty

BAI



BAIW



STANDARD

OPTIONAL



STANDARD

OPTIONAL



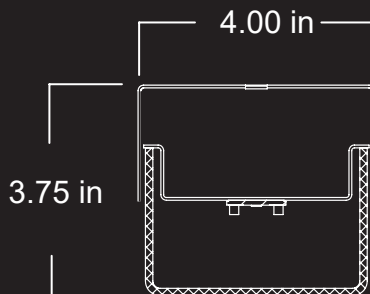
DESCRIPTION

The BAI is offered as ceiling mounted, to provide general ambient illumination. Designed for use in public access areas where vandalism may occur and for areas that must maintain a clean, well-illuminated appearance. Ideal for schools, dormitories, hallways, locker rooms and many more. Body length's available in 2', 3', 4' and 8'.

HOUSING

Die formed, seam welded, and ground smooth (specify material and gauge). Incorporates a removable reflector unitized with all electrical components for easy installation and maintenance. (STAINLESS STEEL AVAILABLE)

DIMENSIONS



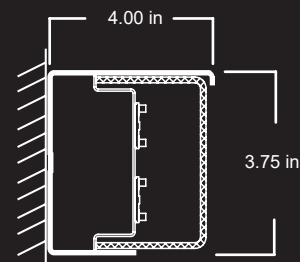
DESCRIPTION

BAIW is offered as Wall Mounted, to provide general ambient illumination. Designed for use in public access areas where vandalism may occur and for areas that must maintain a clean, well-illuminated appearance. Ideal for schools, dormitories, hallways, locker rooms and many more. Body length's available in 2', 3', 4' and 8'.

HOUSING

Die formed, seam welded, and ground smooth (specify material and gauge). Incorporates a removable reflector unitized with all electrical components for easy installation and maintenance. (STAINLESS STEEL AVAILABLE)

DIMENSIONS



WARRANTY

5 - Year Limited Warranty. Complete warranty and terms located at: www.aelnor.com/warranty

BAN



STANDARD



OPTIONAL



LUTRON

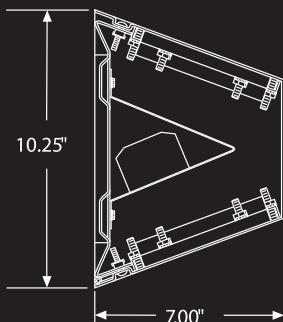
DESCRIPTION

The BAN LED combines maximum security construction with energy saving technology. The BAN utilizes one piece clamshell housing as well as security lensing and tamper resistant fasteners for impact resistance and prevent contraband concealment and unwanted fixture penetration. The BAN is ideal for confinement/security applications. Suitable for use in inmate cells, psychiatric wards, secure corridors and general population areas.

HOUSING

Clamshell design combines one-piece die-formed, seamless, doorless housing which maximizes impact resistance and prevents contraband concealment and unauthorized fixture penetration.

DIMENSIONS



BAO



STANDARD



OPTIONAL



LUTRON

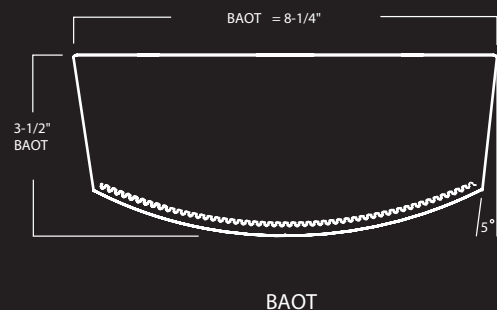
DESCRIPTION

The BAO is a streamlined high abuse fixture with smooth edges and countersunk fasteners. Steel end caps and steel body provides strength while an extruded linear ribbed polycarbonate lens obscures the LED image and spreads light evenly. It is ideal for areas where the need for aesthetics and protection from vandalism are critical. Suited for schools, mental health facilities, stairwells, corridors, detention centers, and public transportation areas.

HOUSING

Heavy duty, 18 ga. steel housing and end caps provide rigid construction. Stainless-steel and die-formed aluminum available. End caps provided with 7/8" knockouts for continuous row mounting

DIMENSIONS



WARRANTY

5 - Year Limited Warranty. Complete warranty and terms located at: www.aelnor.com/warranty



BASTILLE

PRISON GRADE

**Advantage
Environmental
Lighting**