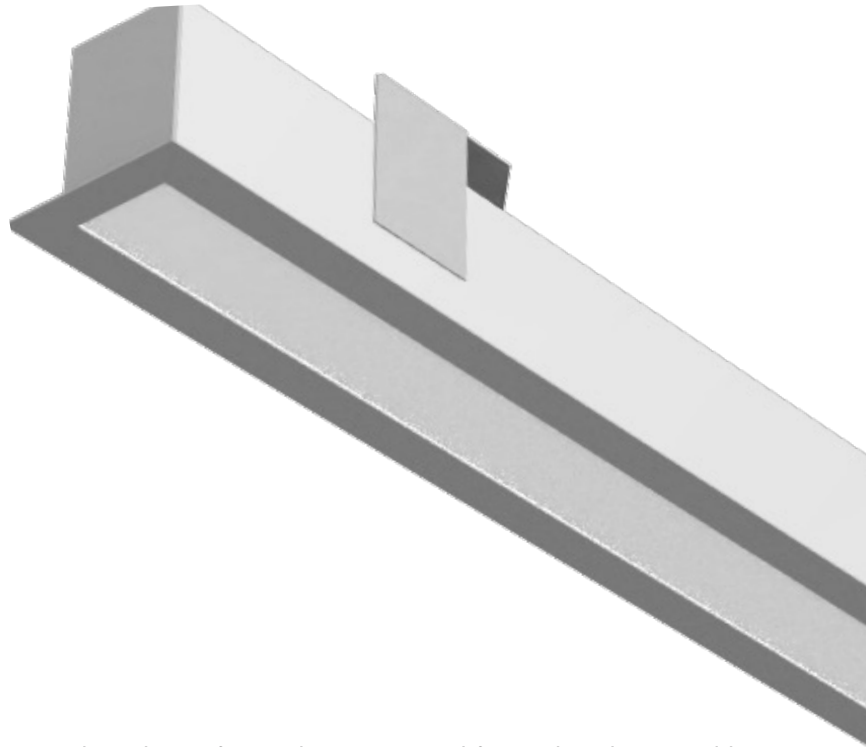


XDL24R

2.5" X 4.5" LINEAR RECESSED



DESCRIPTION: The XDL24R is a recessed LED linear fixture, design with quality craftsmanship. Engineered for quick and easy tool-less installation. The XDL series provides clean lines, smooth continuous runs, and tight lens fitment. Available in continuous runs and custom angles and lengths.

CONSTRUCTION: Constructed of a precision cut, proprietary steel extrusion with flat end caps. Internal joiner system. Available in any length with a 2' minimum.

TOOL-LESS ENTRY: LED Board tray clips in with quick release holders, and held on by tethers. Releasing the clips drops and holds the board tray, allowing quick, tool-less, and easy wiring of the fixture.

MOUNTING: Lay-in grid fixtures fit 9/16 and 15/16 standard T-grids. Flanged mounting and flangeless trim mounting options include innovative top mount bracket to support the fixture.

LEDs: High Output LEDs are available in 2700K, 3000K, 3500K, 4000K, and 5000K color temperatures. Integral LEDs are rated for at least 100K life hours (L70).

OPTICS: Snap-in satin acrylic lens fully diffuses the appearance of the LEDs and provides excellent light transmission.

DRIVER: 0-10V dimming driver included standard. Driver options available for 1% dimming, Lutron EcoSystem, and DALI.

FINISH: Matte white finish standard. Custom finish options are available in various RAL colors.

OPTIONS: Various options are available. If hanging canopies are ordered, one power feed and one non-power feed per fixture should be ordered. If additional or custom options are needed, consult factory.

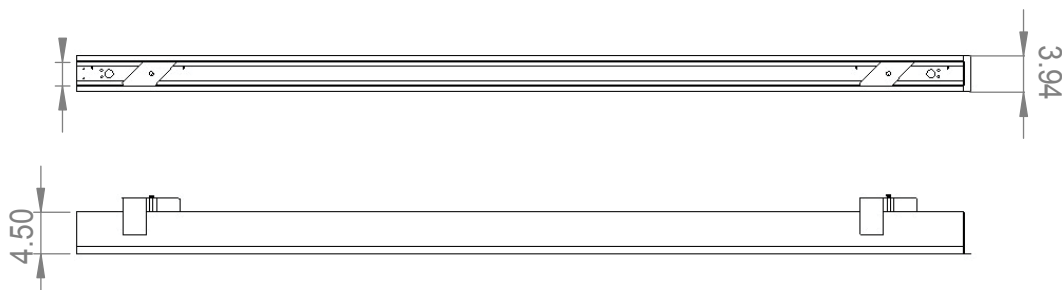
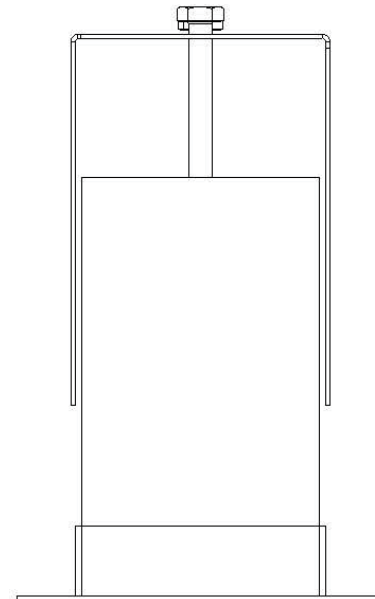
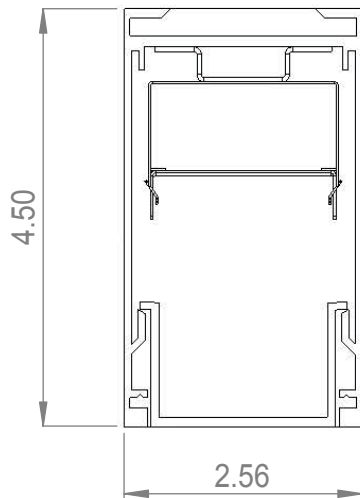
LISTINGS: ISO4 Rated. Food Safe. IP65 ratings. ETL and cETL listed.

WARRANTY: 5-Year Limited Warranty. Complete warranty and terms located at www.aelnow.com/warranty.

Ordering Information on Next Page ►

ORDERING INFORMATION. Example: XDL24R-35-7L-F-M-W-4

SERIES	LINEAR	CCT	OUTPUT	MOUNTING	VOLTAGE	FINISH	OPTIONS
XDL24R	2 2 ft. 3 3 ft. 4 4 ft. 5 5 ft. 6 6 ft. 7 7 ft. 8 8 ft. XX XX ft.	30 3000K 35 3500K 40 4000K 50 5000K	5L 500 lm/ft 7L 700 lm/ft 10L 1000 lm/ft 14L 1400 lm/ft XXXL XXX lm/ft	L Lay-in Grid F Flanged FT Flangeless Trim	M Multi-Volt (120-277V)	MB Matte Black MW Matte White GB Gloss Black GW Gloss White SP Special Finish	14EBL 14 Watt Emergency Ballast EC Emergency Circuit 90 90 CRI L 90 Degree Ceiling-to-Wall XXV XX Degree Ceiling-to-Wall AM Anti-Microbial White Paint DMX Addressable DMX Decoder for DMX512 Control (Controller Supplied by Others). Consult factory for requirements.



LED Information

Output	5L	7L	10L	14L
Lumens/Ft*	500	700	1000	1400
System Wattage/Ft	3.125W	4.375W	6.25W	8.75W
Efficacy (Lm/W)	160	160	160	160
CRI	>82	>82	>82	>82
Dimming	0-10V	0-10V	0-10V	0-10V
Color Consistency	>3 SDCM	>3 SDCM	>3 SDCM	>3 SDCM
Rated Life (L70)	>100,000 hrs	>100,000 hrs	>100,000 hrs	>100,000 hrs

* Lumen output was calculated with 4000K LEDs.

Lumen Adjustment Factors 80 CRI

CCT	2700K	3000K	3500K	4000K	5000K
Adjustment	93.5%	95.2%	96.8%	100.0%	103.0%

Lumen Adjustment Factors 90 CRI

CCT	2700K	3000K	3500K	4000K	5000K
Adjustment	77.5%	79.2%	80.8%	85.1%	87.3%