



Advantage Environmental Lighting

ADVANTAGE ENVIRONMENTAL LIGHTING
ael now for exceptional quality products

Catalog Number
Project
Type

DESCRIPTION

The WV37 Series is a Fluorescent Wall/Vanity fixture available in 1 or 2 lamp configurations. It is available with multiple lens and finish options. It is designed for high abuse environments. High abuse environments include wet areas and other damp environments. Additional uses include areas in which lighting from exteriors is extremely limited, for example, public areas, locker rooms, bathrooms, halls, stairwells, corridors, walls and ceilings.

WV37

VANDAL RESISTANT WALL VANITY LUMINAIRE



PRODUCT SPECIFICATIONS

APPLICATIONS

The WV37 Series of Fluorescent Wall/Vanity fixtures were designed to be high quality, energy efficient fluorescent fixtures for use in wall or ceiling corridors, stairwells and bathrooms. It provides uplight for ambient lighting

OPTICAL SYSTEM

White pre-painted polyester polymer finish with a high reflectivity. Impact resistant, 100% DR Clear Prismatic Lens.

MOUNTING

Units are designed for surface mounting on a wall.

CONSTRUCTION

The fixture is constructed of a structurally embossed, heavy gauge, cold rolled steel. Two up-light slots are provided with ribbed white acrylic lenses

ELECTRICAL SYSTEM

Standard 120-277V electronic instant start ballasts for T8 lampping, $\leq 10\%$ THD.. 50-60 Hz operation. Sound rated A. Thermally protected. Automatic resetting Class P. High Power Factor. Non PCB.

LISTINGS

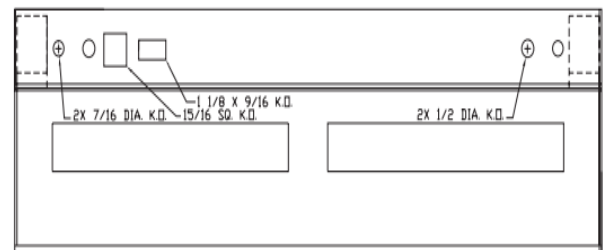
UL and cUL Listed. Damp location rated.

WARRANTY

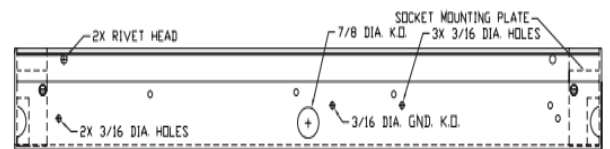
1-Year Limited Warranty. Complete warranty and terms located at www.aelnow.com/warranty.



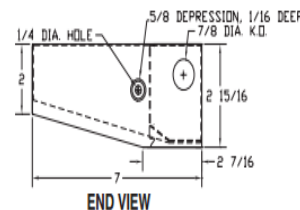
FIXTURE DIMENSIONS



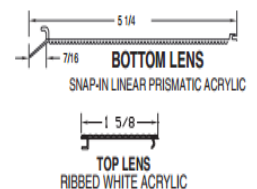
TOP - WITHOUT LENS



FRONT



END VIEW



AEL -- Advantage Environmental Lighting
 Address: 917 West Mayfield, Suite 103
 Arlington, TX 76015
 Phone: 817-468-3591
 Email: info@aelnow.com

© 2015 Advantage Environmental Lighting, Inc. All rights reserved.
 For informational purposes only. Specifications are subject to change without notice. See www.aelnow.com for the most current fixture specifications available.
 Website: www.aelnow.com

The AEL Now Promise to Our Customers:
Environmental Commitment
Exceptional Product Quality
Unsurpassed Customer Service

ORDERING INFORMATION

Example: WV37225IRMWL
 Emergency Options: EM5
 Pull Chain Options: PC
 Outlet Options: CO
 Tamper Options: TPS

SERIES	LAMPS PER SECTION	WATTAGE	DIFFUSER	VOLTAGE	FINISH
WV37	1 2	17 = 17W T8 25 = 25W T8 28T8 = 28W T8 32 = 32W T8	CP = CLEAR PRISMATIC SW = CLEAR PRISMATIC	M = MULTI VOLT	W = WHITE C = CHROME

BALLAST OPTIONS	EMERGENCY OPTIONS	PULL CHAIN OPTIONS	OUTLET OPTIONS	TAMPER OPTIONS
BLANK = NORMAL instant start L = LOW instant start H = HIGH instant start EBPL = ELECTRONIC BALLAST PROGRAM LOW EBPN = ELECTRONIC BALLAST PROGRAM NORMAL EBPH = ELECTRONIC BALLAST PROGRAM HIGH * CD2LT8 = CONT DIMMING 2L T8 * CD2LT5 = CONT DIMMING 2L T5 ** CD4LT8 = CONT DIMMING 4L T8 * SD2LT8 = STEP DIMMING 2L T8 * SD2LT5 = STEP DIMMING 2L T5 ** SD4LT8 = STEP DIMMING 4L T8 * 2 LAMP WILL OPERATE 1 AND 2 LAMPS * 4 LAMP WILL OPERATE 3 AND 4 LAMPS Note : when ordering dimming option you must identify 120v or 277v.	BLANK = NONE EM5 EM7 EM14	PC = PULL CHAIN PC3 = 3 STEP PULL CHAIN	CO = CONVENIENCE OUTLET	TPS = TAMPER PROOF SCREWS TPSD = TAMPER PROOF SCREW DRIVER