



Catalog Number
Project
Type

WV02

Wall / Vanity Luminaire



PRODUCT SPECIFICATIONS

DESCRIPTION

The WV02 Series is a Fluorescent, Wall/Vanity fixture available in a 1 lamp configuration.

APPLICATIONS

The WV02 Series of Fluorescent Wall/Vanity fixtures were designed to be high quality, energy efficient fluorescent fixtures for use in wall or ceiling corridors, stairwells and bathrooms.

CONSTRUCTION

The fixture is constructed of a structurally embossed, heavy gauge, cold rolled steel.

OPTICAL SYSTEM

White pre-painted polyester polymer finish with a high reflectivity.

ELECTRICAL SYSTEM

Standard 120-277V electronic instant start ballasts for T8 lamping, ≤10% THD 50-60 Hz operation. Sound rated A. Thermally protected. Automatic resetting Class P. High Power Factor. Non PCB.

MOUNTING

Units are designed for surface mounting on either a wall or ceiling.

LISTINGS

UL and cUL Listed. Damp location rated.

WARRANTY

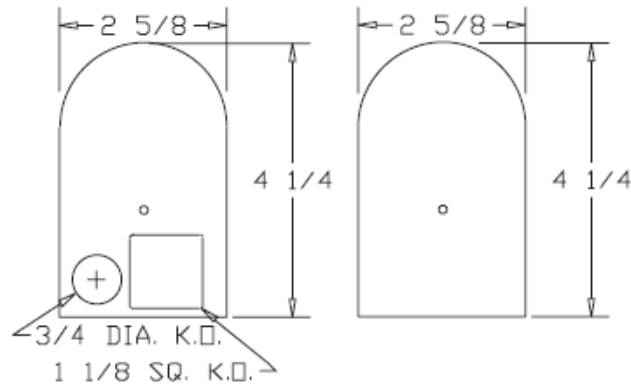
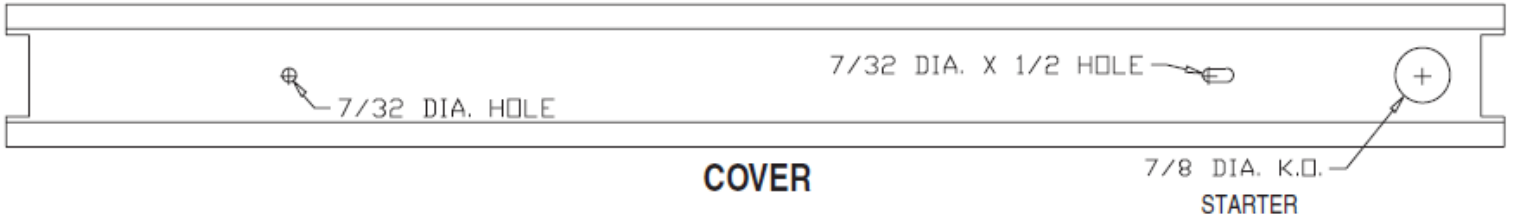
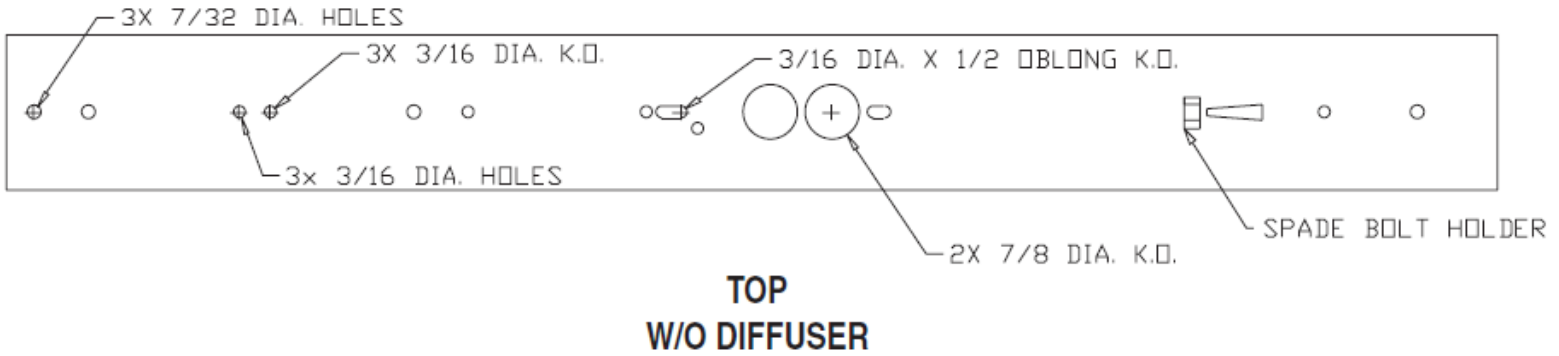
1-Year Limited Warranty. Complete warranty and terms located at www.aelnow.com/warranty.

ORDERING INFORMATION

Example: WV02132MW

WV02						
SERIES	LAMPS PER SECTION	WATTAGE	DIFFUSER	VOLTAGE	COLOR	OPTIONS
WV02	1 1 Lamp	17 17 Watt T8 25 25 Watt T8 28T8 28 Watt T8 32 32 Watt T8	CP Clear Prismatic SW Smooth White	M Multi-Volt (120-277VAC)	W White C Chrome SP Custom	(BLANK) Normal Instant Start H High Ballast Factor L Low Ballast Factor EBPL Electronic Ballast Program Low EBPN Electronic Ballast Program Normal EBPH Electronic Ballast Program High EM5 90 Minute 500 Lumen Emergency Ballast EM7 90 Minute 700 Lumen Emergency Ballast EM14 90 Minute 1400 Lumen Emergency Ballast PC Pull Chain CO Convenience Outlet

Catalog Number
Project
Type



STANDARD PAIR IS ONE PLAIN
AND ONE WITH KOS

