

## MET MEDICO HEALTHCARE LED

**Ligature-Resistant**

The **MET SERIES** provides a supplemental lighting solution for medical facilities with a rounded profile lens. MET is available in 1x4, 2x2, and 2x4 sizes. Driven by performance and a clean aesthetic, the MET is constructed from premium materials with industry leading technology. Security rated and vandal resistant.

**CONSTRUCTION:** Housing formed from prime grade specified cold rolled steel, aluminum option available. Door made from one-piece die-formed specified material, door-frame attached to housing by two aircraft cables. Neoprene gasket seals door to housing. Torx head with center pin hardened security screws standard, Allen head screws with center pin optional. Ligature resistant design.

**ELECTRICAL SYSTEM:** Electronic, standard 0-10V, 1% dimming driver. Long-life LED system rated for >100K hours (L70 @ 50°C). Complies with federal energy efficiency standards. 80 CRI or 90 CRI LEDs available in 2700K, 3000K, 3500K, 4000K and 5000K.

**FINISH:** White TGIC polyester polymer powder coat 5-stage pre-treatment finish with a minimum 93% reflectivity. Salt spray test: 1,000 hours. Antimicrobial finish optional.

**OPTICAL SYSTEM:** Extruded high-efficiency frosted DR acrylic inner diffuser. Impact-resistant clear polycarbonate outer lens. A .125 Clear Polycarbonate lens is standard. Available with either a rounded or square center lens.

**MOUNTING:** Grid mount lays into standard grid sizes. Flange mount includes adjustable 90° swing arm system, unless plaster frame & yoke option is selected.

**LISTINGS:** NSF = NSF2 listed (Non-Food, Splash Zone). Wet location available as an option (IP65 rating). ETL listed for wet locations under covered ceiling.

**WARRANTY:** 5-Year Limited Warranty. Complete warranty and terms located at [www.aelnow.com/warranty](http://www.aelnow.com/warranty).

Ordering Information on Next Page 

## ORDERING INFORMATION

Example: MET-22-30-11L-G-B14-B14-INS-187P-FA-M-90

SERIES	SIZE	CCT	ILLUMINATION LEVEL	MOUNTING	HOUSING MATERIAL	DOOR MATERIAL	DOORFRAME TYPE
MET	14 1x4	27 2700K	4L 4000 Lumens (Standard Low)	G Grid	B20 20 Gauge Cold Roll Steel	B14 14 Gauge Cold Rolled Steel	INS Inset Doorframe
	22 2x2	30 3000K	7L 7000 Lumens (Medium Low)	F Flange	B18 18 Gauge Cold Roll Steel	B16 16 Gauge Cold Rolled Steel	OVL Overlap Doorframe
	24 2x4	35 3500K	11L 11000 Lumens (High Low)		SH18 18 Gauge Stainless Steel (Polished 304)	B18 18 Gauge Cold Roll Steel	
		40 4000K	12L 12000 Lumens (Standard Medium)		SH186 18 Gauge Stainless Steel (Polished 316)	SH18 18 Gauge Stainless Steel (Polished 304)	
		50 5000K	13L 13000 Lumens (Medium Medium)		SHP18 18 Gauge Stainless Steel (Painted 304)	SH186 18 Gauge Stainless Steel (Polished 316)	
		ATTW Tunable White	15L 15000 Lumens (High Medium)		SHP186 18 Gauge Stainless Steel (Painted 316)	SHP18 18 Gauge Stainless Steel (Painted 304)	
		RGBW RGBW	17L 17000 Lumens (High)		SHB18 18 Gauge Stainless Steel (Brushed 304)	SHP186 18 Gauge Stainless Steel (Painted 316)	
			20L 20000 Lumens (Medium High)		SHB186 18 Gauge Stainless Steel (Brushed 316)	SHB18 18 Gauge Stainless Steel (Brushed 304)	
			25L 25000 Lumens (High High)		ALH .063" Aluminum (Painted)	SHB186 18 Gauge Stainless Steel (Brushed 316)	
			XX Custom Lumens			ALH .063" Aluminum (Painted)	

OUTER LENS	LENS PROFILE	DIFFUSER	VOLTAGE	DRIVER	OPTIONS
187P .187" Clear Polycarbonate	RND Round SQ Square	FA Frosted Acrylic	M Multi-Volt (120-277VAC) HV 347-480VAC	BLANK 0-10V 1% Dimming Driver (included standard) CD5 0-10V 5% to Off Dimming Driver EDN Electronic Driver Non-Dimming DALI 1% Dali, Dimming Driver LDE1 Lutron Hi-lume 1% EcoSystem LED driver with Soft-on, Fade-to-Black dimming technology 2TW1 2 Channel 0-10v Tunable White 1% Dimming Driver* 2TWCS 2 Channel 0-10v Tunable White Dimming Driver Compatible with Casambi**	14EBL 14 Watt Emergency Ballast AHS Allen Head Screws (center pin) AM Antimicrobial Paint FZ Fuse & Holder LN LED Night Light PF Plaster Frame & Yoke CB Cross Bar VDO Lutron Vive Integral Fixture Controller RF With Daylight and Occupancy Sensing) LVC Low Voltage Controller with Dimming 90 90 CRI WL Wet Location (IP65) GC Grid Clamp DMX Addressable DMX Decoder for DMX512 Control (Controller Supplied by Others). Consult factory for requirements.

\*Prewired with Tunable White LED boards and (2) 0-10v drivers installed  
\*\*Prewired with Tunable White LED boards and Casambi ready fixture control

Other options and configurations are available. Consult factory for details.

## ENERGY AND PERFORMANCE DATA

INPUT VOLTAGE:	120/277VAC
SYSTEM INPUT POWER:	25.0 - 156.3 WATTS*
DELIVERED LUMEN OUTPUT:	4000 - 25000 LUMENS
STANDARD DIMMING CONTROL:	0-10V
CCT:	3000, 3500, 4000, 5000 KELVIN
CRI:	82 (MINIMUM)
LIFE TIME RATING:	>100,000 HRS @ L70
INPUT FREQUENCY:	50/60 HZ
POWER FACTOR:	>0.9
OPERATING TEMP:	-30° TO 50° C

\*ACTUAL WATTAGE MAY DIFFER BY ±5% WHILE OPERATING 120/277V ±10%

### APPROXIMATE COLOR TEMPERATURE MULTIPLIER

5000K	X	1.03
4000K	X	1
3500K	X	.97
3000K	X	.94
2700K	X	.91

PART#	DELIVERED LUMENS	WATTS	L70 @20C (HRS)
4L	4000 LUMENS	25.0	>100K
7L	7000 LUMENS	43.8	>100K
11L	11000 LUMENS	68.8	>100K
12L	12000 LUMENS	75.0	>100K
13L	13000 LUMENS	81.3	>100K
15L	15000 LUMENS	93.8	>100K
16L	16000 LUMENS	100.0	>100K
20L	20000 LUMENS	125.0	>100K
25L	25000 LUMENS	156.3	>100K

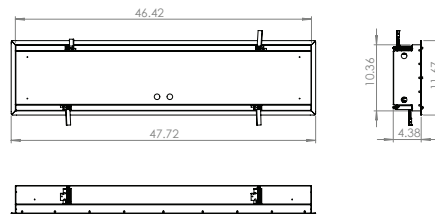


**ROUGH IN SIZE LISTED BELOW.**  
Please pay careful attention to these dimensions.

## DIMENSIONS

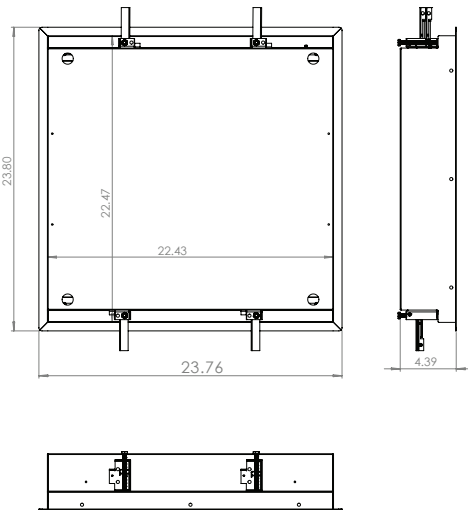
**1x4**

**ROUGH IN SIZE** TO BE 46 11/16" X 10 5/8"



**2x2**

**ROUGH IN SIZE** TO BE 22 5/8" X 22 5/8"



**2x4**

**ROUGH IN SIZE** TO BE 46 5/8" X 22 11/16"

