

MET

BEHAVIORAL HEALTHCARE LED

MEDICO



LENS PROFILE

The MET provides a supplemental lighting solution for Behavioral Healthcare facilities with a rounded profile lens. MET is available in 1x4, 2x2, and 2x4 sizes. Driven by performance and a clean aesthetic, the MET is constructed from premium materials with industry leading technology.

CONSTRUCTION: Housing formed from prime grade specified cold rolled steel, aluminum option available. Door made from one-piece die-formed specified material, door-frame attached to housing by two aircraft cables. Closed cell silicone gasket seals door to housing. Torx head with center pin hardened security screws standard, Allen head screws with center pin optional.

ELECTRICAL SYSTEM: Electronic, standard 0-10V, 1% dimming driver. Long-life LED system rated for >100K hours (L70 @ 50°C). Complies with federal energy efficiency standards. 80 CRI or 90 CRI LEDs available in 2700K, 3000K, 3500K, 4000K and 5000K.

FINISH: White TGIC polyester polymer powder coat 5-stage pre-treatment finish with a minimum 93% reflectivity. Salt spray test: 1,000 hours. Antimicrobial finish optional.

OPTICAL SYSTEM: Extruded high-efficiency frosted DR acrylic inner diffuser. Impact-resistant clear polycarbonate outer lens.

MOUNTING: Grid mount lays into standard grid sizes. Flange mount includes adjustable 90° swing arm system, unless plaster frame & yoke option is selected.

LISTINGS: NSF = NSF2 listed (Non-Food, Splash Zone). IP65 rating, UL listed for wet locations under covered ceiling.

WARRANTY: 5-Year Limited Warranty. Complete warranty and terms located at www.aelnow.com/warranty.



Ordering Information on Next Page ►

ORDERING INFORMATION

Example: MET-G-40-12L-B18-B18-INS-250P-FA-M-CD5-AM

SERIES	MOUNTING	CCT	ILLUMINATION LEVEL	HOUSING MATERIAL	DOOR MATERIAL	DOORFRAME TYPE
MET1 1x4	G Grid	27 2700K	4L 4000 Lumens	B14 14 Gauge CRS	B14 14 Gauge CRS	INS Inset Doorframe
MET2 2x2	F Flange	30 3000K	7L 7000 Lumens	B16 16 Gauge CRS	B16 16 Gauge CRS	OVL Overlap Doorframe
MET4 2x4		35 3500K	11L 11000 Lumens	B18 18 Gauge CRS	B18 18 Gauge CRS	
		40 4000K	12L 12000 Lumens	B20 20 Gauge CRS	B20 20 Gauge CRS	
		50 5000K	13L 13000 Lumens	SH14 14 Gauge SS	SH14 14 Gauge SS	
			15L 15000 Lumens	SH16 16 Gauge SS	SH16 16 Gauge SS	
			17L 17000 Lumens	SH18 18 Gauge SS	SH18 18 Gauge SS	
			20L 20000 Lumens	SHB14 14 Gauge SS (Brushed)	SHB14 14 Gauge SS (Brushed)	
			25L 25000 Lumens	SHB16 16 Gauge SS (Brushed)	SHB16 16 Gauge SS (Brushed)	
				SHB18 18 Gauge SS (Brushed)	SHB18 18 Gauge SS (Brushed)	
				ALH 063" Aluminum	ALH 063" Aluminum	

OUTER LENS	DIFFUSER	VOLTAGE	DRIVER	OPTIONS
187P .187" Clear Polycarbonate	FA Frosted Acrylic	M 120/277V	BLANK 0-10V 1% Dimming Driver (included standard)	12EBL 1200 Lumen Emergency Ballast
250P .250" Clear Polycarbonate			CD5 0-10V 5% to Off Dimming Driver	AHS Allen Head Screws (center pin)
375P .375" Clear Polycarbonate			EDN Electronic Driver Non-Dimming	AM Antimicrobial Paint
			FLDD Fifth Light Dali, Dimming	FZ Fuse & Holder
			LDE1 Lutron Hi-lume 1% EcoSystem LED driver with Soft-on, Fade-to-Black dimming technology	LN LED Night Light
				PF Plaster Frame & Yoke
				CB Cross Bar
				VDO Lutron Vive Integral Fixture Controller RF With Daylight and Occupancy Sensing
				LVC Low Voltage Controller with Dimming
				90 90 CRI

ENERGY AND PERFORMANCE DATA

INPUT VOLTAGE:	120/277VAC
SYSTEM INPUT POWER:	27.8 - 173.4 WATTS*
DELIVERED LUMEN OUTPUT:	4000 - 25000 LUMENS
STANDARD DIMMING CONTROL:	0-10V
CCT:	3000, 3500, 4000, 5000 KELVIN
CRI:	82 (MINIMUM)
LIFE TIME RATING:	>100,000 HRS @ L70
INPUT FREQUENCY:	50/60 HZ
POWER FACTOR:	>0.9
OPERATING TEMP:	-30° TO 50° C

APPROXIMATE COLOR TEMPERATURE MULTIPLIER

5000K	X	1.03
4000K	X	1
3500K	X	.97
3000K	X	.94
2700K	X	.91

PART#	DELIVERED LUMENS	WATTS	L70 @20C (HRS)
4L	4000 LUMENS	27.8	>100K
7L	7000 LUMENS	48.5	>100K
11L	11000 LUMENS	79.3	>100K
12L	12000 LUMENS	83.2	>100K
13L	13000 LUMENS	90.1	>100K
15L	15000 LUMENS	104	>100K
16L	16000 LUMENS	110.1	>100K
20L	20000 LUMENS	138.7	>100K
25L	25000 LUMENS	173.4	>100K

*ACTUAL WATTAGE MAY DIFFER BY ±5% WHILE OPERATING 120/277V ±10%

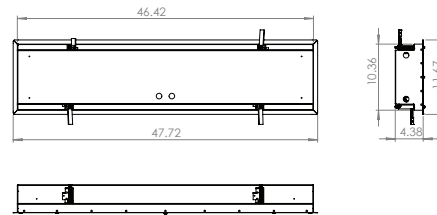


ROUGH IN SIZE LISTED BELOW.
Please pay careful attention to these dimensions.

DIMENSIONS

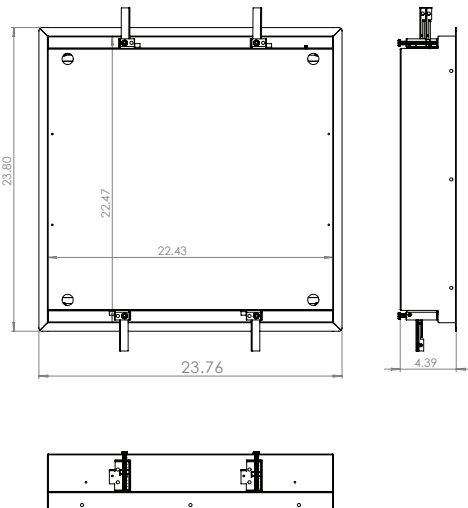
1x4

ROUGH IN SIZE TO BE 46 11/16" X 10 5/8"



2x2

ROUGH IN SIZE TO BE 22 5/8" X 22 5/8"



2x4

ROUGH IN SIZE TO BE 46 5/8" X 22 11/16"

