

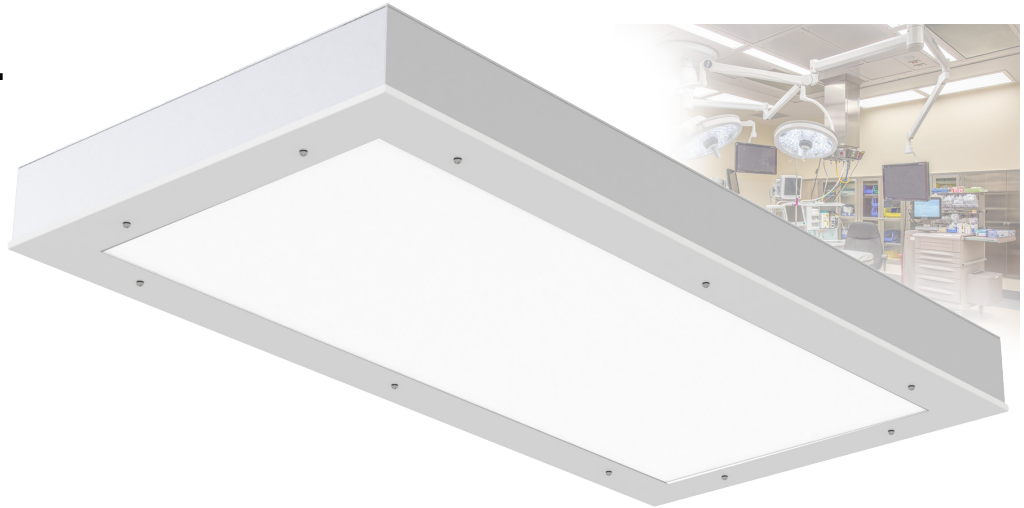


CATALOG #:

PROJECT:

TYPE:

MEI SURFACE MOUNT LED OPERATING ROOM



The **MEI** provides a supplemental, asymmetric/symmetric surface mount lighting solution in the operating room. The MEI is available in 1x4, 2x2, and 2x4 sizes, and it is typically positioned around the perimeter of the operating room. Available in 1x4, 2x2, and 2x4 sizes. Typically positioned around the perimeter of the operating room. Available with choice of housing and doorframe materials, anti-microbial paint, and a MIL STD 461G compliant option, the **MEI** is the perfect choice in the operating room surgical suite.

DOORFRAME: Choice of inset or overlapping door frame. Various door frame materials are available, if additional options are needed, consult factory. White TGIC polyester powder coat – 5-stage pre-treatment. Salt spray test: 1,000 hours; Reflectance: 92%. Doorframe secured to housing with stainless steel aircraft cables and captive flush mounted Phillips head stainless steel fasteners.

ELECTRICAL SYSTEM: Electronic driver 0-10V 1% dimming included standard. Long-life LED system rated for >100K hours (L70 @ 25°C). Complies with federal energy efficiency standards.

OPTICAL SYSTEM: High transmission diffused DR acrylic lens. Internal reflector optics with choice of full symmetric, asymmetric/symmetric, or full asymmetric maintain a uniform appearance while being engineered specifically for surgical suite applications. RF grid lens included when MIL STD 461G Compliance option is ordered.

MOUNTING: Surface Mount.

HOUSING: Choice of heavy gauge cold roll steel, stainless steel, or aluminum (choice of 304 or 316). Seam-welded construction. All doors attached to the housing with two stainless steel aircraft cables. Stainless steel Philips head screws secure door frame to housing. White TGIC polyester powder coat with a 5-stage pre-treatment. Salt spray test >1,000 hours. Reflectance of 92%. Antimicrobial finish optional.

LED: 80 CRI or 90 CRI LEDs available in 2700K, 3000K, 3500K, 4000K and 5000K. Life is >100,000 hours at 70% lumen maintenance.

DOORFRAME GASKET: One-piece closed cell silicone gasket seals doorframe to housing.

LISTINGS: ETL Listed. Design conforms to the basic requirements of NSF. IP65 rated. MIL option complies with MIL-STD-461G conducted emissions regulation and includes a radio suppression grid lens. Suitable for FED-STD-209E/Class 1 (ISO 3) cleanrooms. BAA and BABA compliant.

WARRANTY: 5 Year Limited Warranty on housing and electronics. Complete warranty and terms located at: www.aelnow.com/warranty.

Ordering Information on Next Page ►

ORDERING INFORMATION Example: MEI14-40-7L-B20-B18-OVL-SY-PA125-M-90

SERIES	SZIE	COLOR TEMP	ILLUMINATION	HOUSING	DOOR MATERIAL	DOOR TYPE
MEI	14 1x4 22 2x2 24 2x4	27 2700K 30 3000K 35 3500K 40 4000K 50 5000K	 4L 4000 Lumens 7L 7000 Lumens 11L 11000 Lumens 12L 12000 Lumens 13L 13000 Lumens 15L 15000 Lumens 16L 16000 Lumens 20L 20000 Lumens 25L 25000 Lumens XX Custom Lumens	B20 20 Gauge Cold Roll Steel B18 18 Gauge Cold Roll Steel SH184 18 Gauge Stainless Steel (Polished 304) SH186 18 Gauge Stainless Steel (Polished 316) SHP184 18 Gauge Stainless Steel (Painted 304) SHP186 18 Gauge Stainless Steel (Painted 316) SHB184 18 Gauge Stainless Steel (Brushed 304) SHB18 18 Gauge Stainless Steel (Brushed)	B20 20 Gauge Cold Roll Steel B18 18 Gauge Cold Roll Steel SH184 18 Gauge Stainless Steel (Polished 304) SH186 18 Gauge Stainless Steel (Polished 316) SHP184 18 Gauge Stainless Steel (Painted 304) SHP186 18 Gauge Stainless Steel (Painted 316) SHB184 18 Gauge Stainless Steel (Brushed 304) SHB18 18 Gauge Stainless Steel (Brushed)	OVL Overlap INS Inset
DISTRIBUTION	LENS	VOLTAGE	DRIVERS	CIRCUITS	OPTIONS	
SY Full Symmetric ASSY Asymmetric/Symmetric FAS Full Asymmetric	A19 .156" Prismatic Acrylic #19 PA125 125 Prismatic Acrylic PA156 .156 Prismatic Acrylic PA187 .187 Prismatic Acrylic PP125 Prismatic Inner with .125 Clear Outer Polycarbonate SY Symmetric Diffused DR Acrylic	M Multi-Volt (120-277VAC)	BLANK 0-10V Dimming Driver (included standard) CD5 0-10V 5% to Off Dimming Driver EDN Electronic Driver Non-Dimming FLDD Fifth Light Dali, Dimming LDE1 Lutron Hi-lume 1% EcoSystem LED driver with Soft-on, Fade-to-Black dimming technology	1 1 Circuits 2 2 Circuits	14EBL 14 Watt Emergency Ballast MIL1 MIL STD 461G compliant 90 90 CRI AM Anti-Microbial Paint WL Wet Location	

Dimensions on Next Page

ENERGY AND PERFORMANCE DATA

INPUT VOLTAGE:	120/277VAC
SYSTEM INPUT POWER:	25.0 - 156.3 WATTS*
DELIVERED LUMEN OUTPUT:	4000 - 25000 LUMENS
STANDARD DIMMING CONTROL:	0-10V
CCT:	3000, 3500, 4000, 5000 KELVIN
CRI:	80 (MINIMUM)
LIFE TIME RATING:	>100,000 HRS @ L70
INPUT FREQUENCY:	50/60 HZ
POWER FACTOR:	>0.9
OPERATING TEMP:	-30° TO 50° C

APPROXIMATE COLOR TEMPERATURE MULTIPLIER

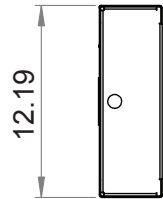
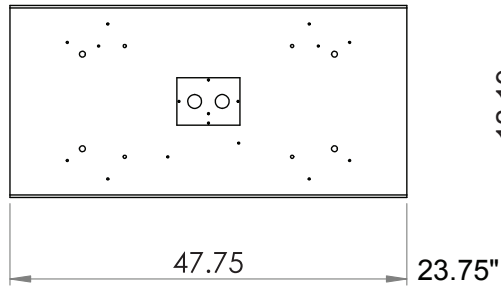
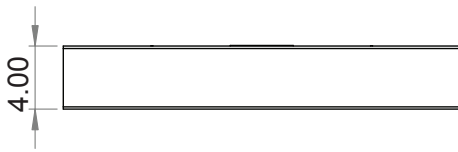
5000K	X	1.03
4000K	X	1
3500K	X	.97
3000K	X	.94
2700K	X	.91

OUTPUT	LUMENS	WATTS	L70 @20C (HRS)
4L	4000 LUMENS	25.0	>100K
7L	7000 LUMENS	43.8	>100K
11L	11000 LUMENS	68.8	>100K
12L	12000 LUMENS	75.0	>100K
13L	13000 LUMENS	81.3	>100K
15L	15000 LUMENS	93.8	>100K
16L	16000 LUMENS	100.0	>100K
20L	20000 LUMENS	125.0	>100K
25L	25000 LUMENS	156.3	>100K

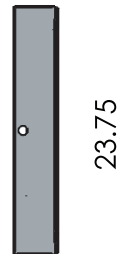
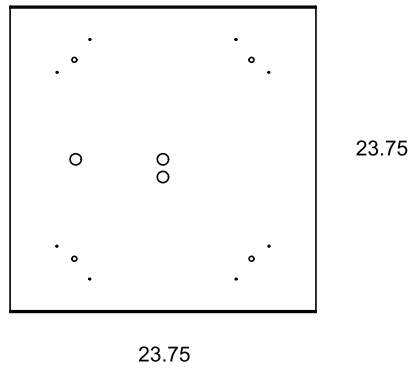
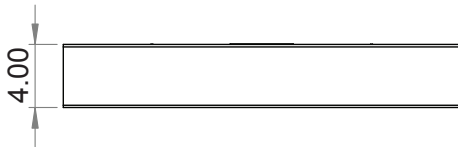
*ACTUAL WATTAGE MAY DIFFER BY ±5% WHILE OPERATING 120/277V ±10%

DIMENSIONS

1X4



2X2



2X4

