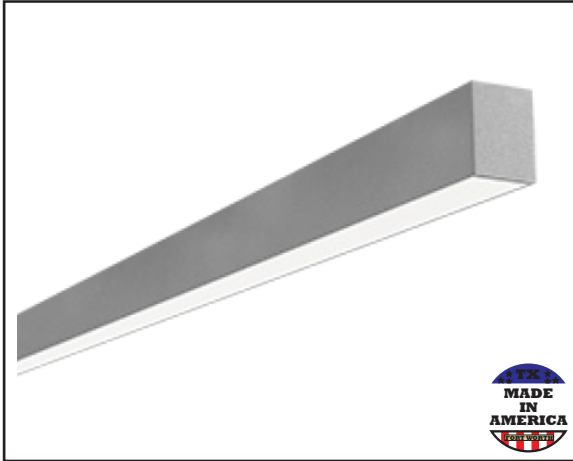


MEF4RS

4" x 4.5" Recessed Steel Designer LED Luminaire



STANDARD

OPTIONAL



PRODUCT SPECIFICATIONS

DESCRIPTION

The MEF4RS Series is an architecturally designed Recessed Steel LED Luminaire that is classically styled and fit for any interior. It is available for continuous run mounting.

APPLICATIONS

The MEF4RS Series of Recessed Steel Luminaires are designed to be high quality, energy efficient LED fixtures for use in commercial applications, offices, hotel lobbies, museums, government facilities, schools, and public areas.

CONSTRUCTION

The fixture is constructed of a 4" wide heavy gauge steel body. The fixture is available in any run length within 1' increments. Heavy duty housing crimped along sides for extra rigidity and straight alignment.

OPTICAL SYSTEM

High output LED's available in 3000K, 3500K, 4000K, and 5000K. CRI >82. Linear ribbed acrylic lens. White polyester polymer finish with a high reflectivity.

ELECTRICAL SYSTEM

Electronic drivers are available for 120/277V applications. Long-life LED system rated for >50K life hours (L70 @ 25°C). Metal gear tray for internal LED driver. Complies with federal energy efficiency standards.

ACI BH-B;

This fixture is designed to be recessed mounted. Continuous run available.

@GH-B; G

Independently tested to IESNA LM-79 and LM-80 specifications. UL and cUL Listed.

K 5 F F 5 BHM

5-Year Limited Warranty. Complete warranty & terms located at www.aelnow.com/resources.

ORDERING INFORMATION

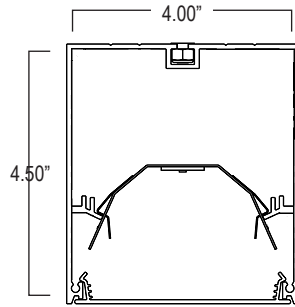
Example: MEF4RSL35MSMW4

Options: 12EBL

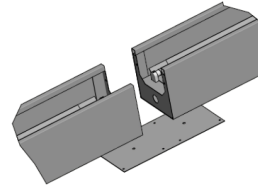
SERIES	COLOR TEMP		OUTPUT		LENS		VOLTAGE		FINISH	
MEF4RS	30	3000K	S	Standard	S	Satin	M	120/277 (Multi-Volt)	W	White
	35	3500K	HS	High Standard						
	40	4000K	M	Medium						
	50	5000K	HM	High Medium						
									SP	Special

ROW LENGTH		OPTIONS		WIRING HARNESS	
2	2 Feet	12EBL	1200 Lumen Emergency Ballast	WH34	3-Wire 4 Feet
3	3 Feet	FW	Flex Whip Cable 6'	WH44	4-Wire 4 Feet
4	4 Feet			WH54	5-Wire 4 Feet
5	5 Feet			WH38	3-Wire 8 Feet
6	6 Feet			WH48	4-Wire 8 Feet
7	7 Feet			WH58	5-Wire 8 Feet
8	8 Feet				
XX	XX Feet				

FIXTURE DIMENSIONS



For Continuous Run Mounts:

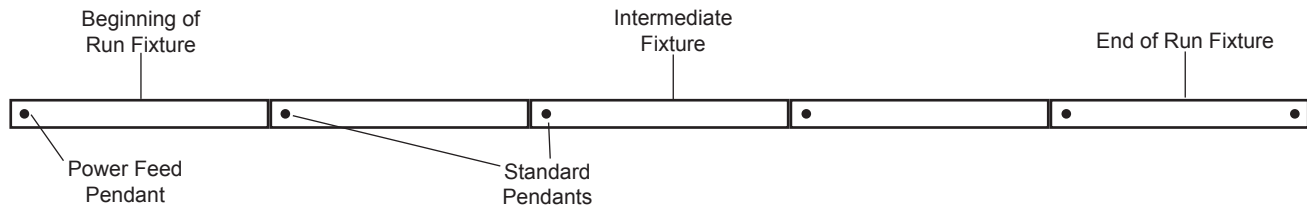


ROW CONFIGURATIONS

AEL would like to double check your Bill of Material upon placement of your order if the number of rows and their individual row lengths are provided on the purchase order as follows:

Row 1 - 8' Row 2 - 8' Row 3 - 24' Row 4 - 24'

Please provide any additional pertinent information such as additional power drops required mid-row.



		Row Length																							
		2'	4'	6'	8'	10'	12'	14'	16'	18'	20'	22'	24'	26'	28'	30'	32'	34'	36'	38'	40'	42'	44'	46'	48'
Fixture Length	2'	1		1		1		1		1		1		1		1		1		1		1		1	
	4'		1	1		1	1				1	1			1	1			1	1			1	1	
	8'				1	1	1	1	2	2	2	2	3	3	3	3	4	4	4	4	5	5	5	5	6
Total Pendants Needed		2	2	3	2	3	3	4	3	4	4	5	4	5	5	6	5	6	6	7	6	7	7	8	7

LED SYSTEM DATA

Output	Delivered Lumens Per Foot	System Wattage Per Foot	CRI	LPW
Standard	506 Lm/Ft	3.3	82	148
Medium	709 Lm/Ft	5.1	82	139
High Standard	965 Lm/Ft	6.9	82	140
High Medium	1,468 Lm/Ft	10.3	82	143

ENERGY AND PERFORMANCE DATA

Input Voltage	120/277 VAC
Standard Dimming Control	0-10V
CCT	3000, 3500, 4000, 5000 Kelvin
CRI	82 (minimum)
Life Time Rating	100,000 hrs at L70
Input Frequency	50/60Hz
Power Factor	>0.9
Operating Temp	Low Ambient -20°C/ High Ambient 50°C

Additional Lumen options available add desired lumens to end of part #
e.g. MEF4RS40MSMW43500

Length	Lumens	Wattage
2 Foot	1012	6.6
3 Foot	1518	9.9
4 Foot	2024	13.2
6 Foot	3036	19.8
8 Foot	4048	26.4

Length	Lumens	Wattage
2 Foot	1418	10.2
3 Foot	2127	15.3
4 Foot	2836	20.4
6 Foot	4254	30.6
8 Foot	5672	40.8

Length	Lumens	Wattage
2 Foot	1930	13.8
3 Foot	2895	20.7
4 Foot	3860	27.6
6 Foot	5790	41.4
8 Foot	7720	55.2

Length	Lumens	Wattage
2 Foot	2936	20.6
3 Foot	4404	30.9
4 Foot	5872	41.2
6 Foot	8808	61.8
8 Foot	11744	82.4