

MED RECESSED PATIENT ROOM LED



DESCRIPTION: The **MED** features innovative optical technology which provides powerful, focused illumination for examinations. Its exemplary design directs the light onto the bed and provides glare-free illumination for both the medical professional and patient. This ergonomical styled design helps bring a relaxed, comfortable feel to any patient room.

ELECTRICAL SYSTEM: Electronic driver 0-10V 1% dimming included standard. Long-life LED system rated for >100K hours (L70 @ 25°C). Complies with federal energy efficiency standards.

OPTICAL SYSTEM: High efficiency extruded frosted acrylic inner diffuser. Choice of clear polycarbonate lenses.

LISTINGS: ETL/cETL listed. IP65 Rated. Manufactured in the USA, BAA compliant.

CONSTRUCTION: Housing construction per specification, available in 20 or 18 gauge cold roll steel, stainless steel, or .063" aluminum construction. Inset doorframe available in 18 gauge cold roll steel, stainless steel, or .063" aluminum. Electrostatically applied powder coat matte white finish standard, brushed finish optional. Anti-microbial white finish available with option AM. Stainless steel philips fasteners are standard, with T25 Torx as an option.

MOUNTING: Recessed grid and recessed flanged applications. Easy installation with adjustable 90° swing arm system standard. Universal mounting allows for both recessed flanged and recessed grid mounting.

LED: LEDs available in 2700K, 3000K, 4000K and 5000K with CRI > 82. Projected life is >100,000 hours at 70% lumen maintenance. 90 CRI available.

DOORFRAME GASKET: Neoprene gasket seals door frame to housing (optional with wet location option).

WARRANTY: 5-Year Limited Warranty. Complete warranty and terms located at www.aelnow.com/warranty

Ordering Information on Next Page ►

ORDERING INFORMATION

Example: MED-14-35-7L-B20-B18INS-125P-M-90

SERIES	SIZE	CCT	ILLUMINATION	MOUNTING	HOUSING	DOOR
MED	14 1'x4'	27 2700K		G Grid F Flange	B18 18 Gauge Cold Rolled Steel	B18INS 18 Gauge Cold Roll Steel
	22 2'x2'	30 3000K			B20 20 Gauge Cold Roll Steel (Painted)	SHP18INS 18 Gauge Stainless Steel (Painted 304)
	24 2'x4'	35 3500K			SHP18 18 Gauge Stainless Steel (Painted 304)	SHP18INS6 18 Gauge Stainless Steel (Painted 316)
		40 4000K			SHP186 18 Gauge Stainless Steel (Painted 316)	SHB18INS 18 Gauge Stainless Steel (Brushed 304)
		50 5000K			SHB18 18 Gauge Stainless Steel (Brushed 304)	SHB18INS6 18 Gauge Stainless Steel (Brushed 316)
					SHB186 18 Gauge Stainless Steel (Brushed 316)	ALHINS 18 Gauge Stainless Steel (Painted)
			4L 4000 Lumens		ALH .063" Aluminum (Painted)	
			7L 7000 Lumens			
			9L 9000 Lumens			
			11L 11000 Lumens			
			12L 12000 Lumens			
			13L 13000 Lumens			
			XX Custom Lumens			

OUTER LENS	VOLTAGE	DRIVER	OPTIONS
125P .125" Clear Polycarbonate	M Multi-Volt (120-277VAC)	BLANK 0-10V Dimming Driver (included standard)	14EBL 14 Watt Emergency Ballast
156P .187" Clear Polycarbonate	HV 347-480VAC	CD5 0-10V 5% to Off Dimming Driver	90 90 CRI
187P .187" Clear Polycarbonate		EDN Electronic Driver Non-Dimming	AM Antimicrobial White Paint
250P .250" Clear Polycarbonate		DALI 1% Dali Dimming Driver	TPS Tamper Proof T25 Torx head screws with center pin
		LDE1 Lutron Hi-lume 1% EcoSystem LED driver with Soft-on, Fade-to-Black dimming technology	VDO Lutron Vive Integral Fixture Control (RF with Daylight and Occupancy Sensing)
			LVCD Low Voltage Controller with Dimming

Other options and configurations are available. Consult factory for details.

Dimensions on Next Page ►

ENERGY AND PERFORMANCE DATA

INPUT VOLTAGE:	120/277VAC
SYSTEM INPUT POWER:	27.8 - 93.5 WATTS*
DELIVERED LUMEN OUTPUT:	4000 - 13000 LUMENS
STANDARD DIMMING CONTROL:	0-10V
CCT:	2700, 3000, 3500, 4000, 5000 KELVIN
CRI:	82 (MINIMUM)
LIFE TIME RATING:	>100,000 HRS @ L70
INPUT FREQUENCY:	50/60 HZ
POWER FACTOR:	>0.9
OPERATING TEMP:	-30° TO 50° C

APPROXIMATE COLOR TEMPERATURE MULTIPLIER

5000K	X	1.03
4000K	X	1
3500K	X	.97
3000K	X	.94
2700K	X	.91

PART#	DELIVERED LUMENS	WATTS	L70 @20C (HRS)
4L	4000	27.8	>100K
7L	7000	50.3	>100K
9L	9000	64.7	>100K
11L	11000	79.1	>100K
12L	12000	83.2	>100K
13L	13000	93.5	>100K

*ACTUAL WATTAGE MAY DIFFER BY ±5% WHILE OPERATING 120/277V ±10%

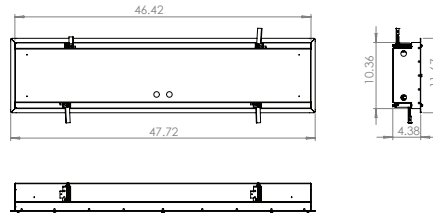


ROUGH IN SIZE LISTED BELOW.
Please pay careful attention to these dimensions.

DIMENSIONS

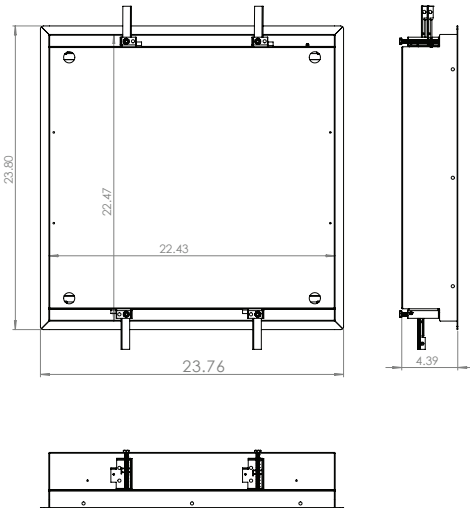
1x4

ROUGH IN SIZE TO BE 46 11/16" X 10 5/8"



2x2

ROUGH IN SIZE TO BE 22 5/8" X 22 5/8"



2x4

ROUGH IN SIZE TO BE 46 5/8" X 22 11/16"

