

MEBFG

RECESSED GRID
LED SURGICAL
SUITE



The **MEBFG** is a green and white LED operating room fixture. High transmission and diffusion lens with choice of symmetric, asymmetric/symmetric, and full asymmetric optics to accommodate the lighting needs of surgical suites. Green and white or all green LEDs aid in the surgical room. Available in 1x4, 2x2, and 2x4 sizes. Typically positioned around the perimeter of the operating room. Choice of housing and doorframe materials, antimicrobial paint, and a MIL STD 461G compliant option, the MEBFG is the perfect choice in the operating room surgical suite.

ELECTRICAL SYSTEM: Electronic driver 0-10V, 1% dimming standard. Long-life LED system, white LEDs rated for >100K hours, green LEDs rated for >85K hours. Complies with federal energy efficiency standards.

OPTICAL SYSTEM: High transmission diffused high impact acrylic lens. Internal reflector optics with choice of full symmetric, asymmetric/symmetric, or full asymmetric maintain a uniform appearance while being engineered specifically for surgical suite applications. RF grid lens included when MIL STD 461G Compliance option is ordered.

HOUSING: Choice of heavy gauge cold roll steel, stainless steel, or aluminum. Seam-welded construction. All doors attached to the housing with two stainless steel aircraft cables. Stainless steel Philips head screws secure door frame to housing. White TGIC polyester powder coat with a 5-stage pre-treatment. Salt spray test >1,000 hours. Reflectance of 92%. Antimicrobial finish optional.

DOORFRAME: Choice of heavy gauge cold roll steel, stainless steel, or aluminum. White TGIC polyester powder coat with a 5-stage pre-treatment. Salt spray test >1,000 hours. Reflectance of 92%. Doorframe secured to housing with stainless steel aircraft cables and pan-head Phillips head stainless steel fasteners. Antimicrobial finish optional.

DOORFRAME GASKET: Neoprene gasket seals doorframe to housing.

MOUNTING: Flange applications. Easy installation with adjustable 90° swing arm system standard. Universal mounting allows for both recessed flanged and recessed grid mounting.

LISTINGS: UL Listed. NSF = NSF2 listed (Non-Food, Splash Zone). IP65 rated. MIL option complies with MIL-STD-461G conducted emissions regulation and includes a radio suppression grid lens. Suitable for FED-STD-209E/Class 1 (ISO 3) cleanrooms.

LED: 80 CRI or 90 CRI LEDs available in 2700K, 3000K, 3500K, 4000K and 5000K. Life is >100,000 hours at 70% lumen maintenance.

WARRANTY: 5-Year Limited Warranty. Complete warranty and terms located at www.aelnow.com/warranty.

Ordering Information on Next Page ►



ORDERING INFORMATION

Example: MEBFG-14-40-12L-B18-B18-INS-SY-M

SERIES	SIZE	CCT	ILLUMINATION LEVEL	HOUSING	DOOR FRAME	DOOR TYPE
MEBFG	14 1x4 22 2x2 24 2x4	27 2700K 30 3000K 35 3500K 40 4000K 50 5000K	25G50W 25W Green/50W White LED 40G40W 40W Green/40W White LED 42G50 42W Green/50W White LED 42G75W 42W Green/75W White LED 42G100W 42W Green/100W White LED 42G 42W Green LED 84G 84W Green LED 120G 120W Green LED	B20 20 Gauge Cold Roll Steel B18 18 Gauge Cold Roll Steel SH18 18 Gauge Stainless Steel (Polished 304) SH186 18 Gauge Stainless Steel (Polished 316) SHP18 18 Gauge Stainless Steel (Painted 304) SHP186 18 Gauge Stainless Steel (Painted 316) SHB18 18 Gauge Stainless Steel (Brushed 304) SHB186 18 Gauge Stainless Steel (Brushed 316) ALH .063" Aluminum (Painted)	B18 18 Gauge Cold Roll Steel SH18 18 Gauge Stainless Steel (Polished 304) SH186 18 Gauge Stainless Steel (Polished 316) SHP18 18 Gauge Stainless Steel (Painted 304) SHP186 18 Gauge Stainless Steel (Painted 316) SHB184 18 Gauge Stainless Steel (Brushed 304) SHB18 18 Gauge Stainless Steel (Brushed) ALH .063" Aluminum (Painted)	INS Inset Door OVL Overlap Door

LENS OPTICS	VOLTAGE	DRIVER	CIRCUITS	OPTIONS
SY Full Symmetric Optics ASSY Asymmetric/Symmetric Optics FAS Full Asymmetric Optics	M Multi-Volt (120-277VAC) HV 347-480VAC	BLANK 0-10V 1% Dimming Driver (included standard) CD5 0-10V 5% to Off Dimming Driver EDN Electronic Driver Non-Dimming DALI 1% Dali Dimming Driver LDE1 Lutron Hi-lume 1% EcoSystem LED driver with Soft-on, Fade-to-Black dimming technology	1 1 Circuit 2 2 Circuits	14EBL 14 Watt Emergency Driver MIL1 MILSTD 461G compliant, 1 circuit* MIL2 MILSTD 461G compliant, 2 circuit* 90 90 CRI CR Continuous run AM Anti-Microbial Paint VDO Lutron Vive Integral Fixture Control (RF with Daylight and Occupancy Sensing) 10KV/KA Surge Protector TPS Tamper-Proof Fasteners 2G 2" High T-Grid Mounting RFIL RFI Lens RFIF1 RFI Filter, 1 circuit RFIF2 RFI Filter, 2 circuits

*For MILSTD 461G Compliance, an RFI grid lens will be included, and option RFI does not need to be ordered.

Other options and configurations are available. Consult factory for details.

Dimensions on Next Page ►

ENERGY AND PERFORMANCE DATA

INPUT VOLTAGE:	120/277VAC
SYSTEM INPUT POWER:	27.8 - 173.4 WATTS*
DELIVERED LUMEN OUTPUT:	4000 - 25000 LUMENS
STANDARD DIMMING CONTROL:	0-10V
CCT:	3000, 3500, 4000, 5000 KELVIN
CRI:	82 (MINIMUM)
LIFE TIME RATING:	>100,000 HRS @ L70
INPUT FREQUENCY:	50/60 HZ
POWER FACTOR:	>0.9
OPERATING TEMP:	-30° TO 50° C

*ACTUAL WATTAGE MAY DIFFER BY ±5% WHILE OPERATING 120/277V ±10%

APPROXIMATE COLOR TEMPERATURE MULTIPLIER

5000K	X	1.03
4000K	X	1
3500K	X	.97
3000K	X	.94
2700K	X	.91

OUTPUT	DELIVERED LUMENS	WATTS	L70 @20C (HRS)
40W WHITE	5772	40	>100K
50W WHITE	7215	50	>100K
75W WHITE	10650	75	>100K
100W WHITE	12040	100	>100K
25W GREEN	1911	25	>85K
42W GREEN	3210	42	>85K
84W GREEN	6310	84	>85K
120W GREEN	8991	120	>85K

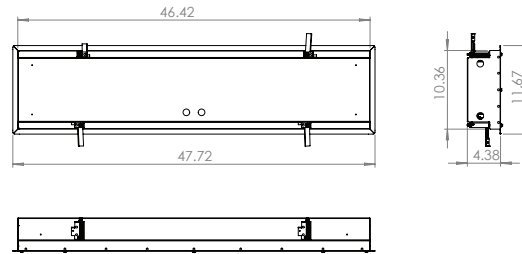


ROUGH IN SIZE LISTED BELOW.
Please pay careful attention to these dimensions.

1x4

ROUGH IN SIZE TO BE 46 11/16" X 10 5/8"

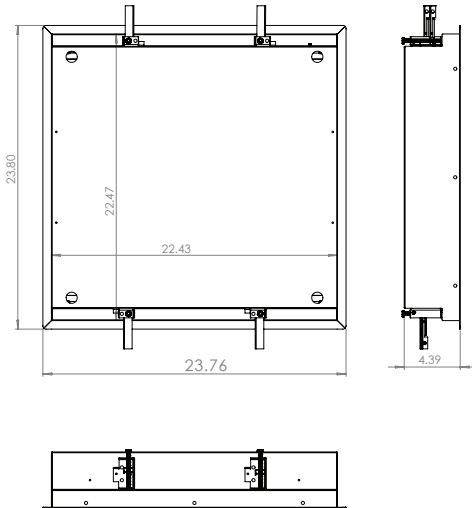
DIMENSIONS



OPTIONS

2x2

ROUGH IN SIZE TO BE 22 5/8" X 22 5/8"



2x4

ROUGH IN SIZE TO BE 46 5/8" X 22 11/16"

