

LWV35

LED Wall / Vanity



PRODUCT SPECIFICATIONS

DESCRIPTION

The LWV35 Series is an LED Wall/Vanity fixture available in 1 or 2 lamp configurations. It is available with multiple lens and finish options.

APPLICATIONS

The LWV35 Series of LED wall/Vanity fixtures were designed to be high quality, energy efficient LED fixtures for use in wall or ceiling corridors, stairwells and bathrooms.

CONSTRUCTION

The fixture is constructed of a structurally embossed, heavy gauge, cold rolled steel.

OPTICAL SYSTEM

White pre-painted polyester polymer finish with a high reflectivity.

ELECTRICAL SYSTEM

Standard 120-277V, 0-10V dimming, 50-60 Hz operation. Sound rated A. Thermally protected. Automatic resetting Class P. High Power Factor. Non PCB.

MOUNTING

Units are designed for surface mounting on either a wall or ceiling.

LISTINGS

Designed for damp locations.

WARRANTY

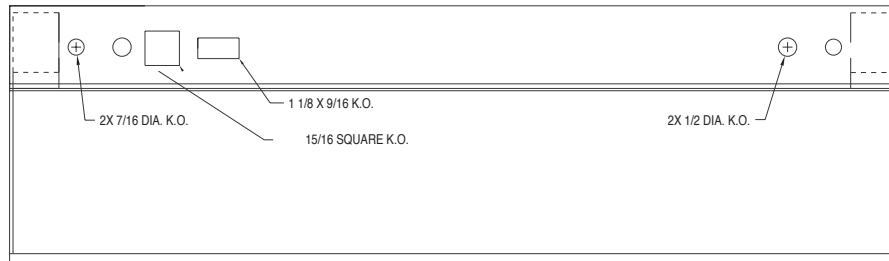
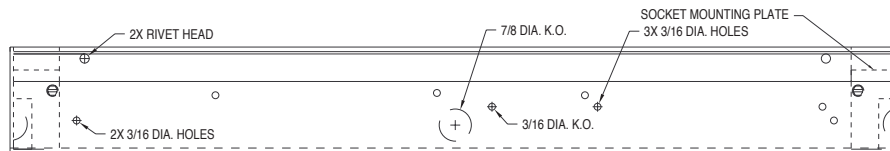
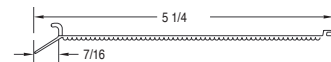
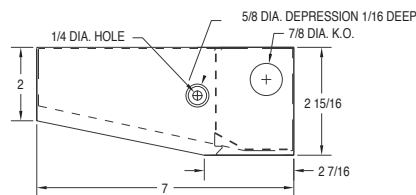
5-Year Limited Warranty. Complete warranty and terms located at www.aelnow.com/warranty.

ORDERING INFORMATION

Example: LWV3530SCPMW
Emergency Option: 12EBL
Pull Chain Option: PC
Outlet Option: CO
Tamper Option: TPS

SERIES	COLOR TEMP	OUTPUT	DIFFUSER	VOLTAGE	COLOR	LENGTH						
LWV35	30	3000K	SL	Standard Low	CP	Clear Prismatic	M	Multi-Volt (120-277VAC)	W	White	2	2' (24 1/4")
	35	3500K	ML	Medium Low					SW	Smooth White	C	Chrome
	40	4000K	HL	High Low					SP	Custom		
	50	5000K	SM	Standard Medium								
			MM	Medium Medium								
			HM	High Medium								
			SH	Standard High								
			MH	Medium High								
		HH	High High									

EMERGENCY OPTIONS		PULL CHAIN		OUTLET OPTIONS		TAMPER-PROOF OPTIONS	
12EBL	90-Minute, 1200 Lumen Emergency	PC	Pull Chain	CO	Convenience Outlet	TPS	Tamper-Proof Screws
		PC3	3 Step Pull Chain			TPSD	Tamper-Proof Screwdriver

FIXTURE DIMENSIONS

TOP - WITHOUT LENS

FRONT

LENS

SNAP-IN LINEAR PRISMATIC ACRYLIC

Output	Delivered Lumens	System Wattage	L70 @20C (hrs)
SL	4650	33	>100K
ML	7974	57	>100K
HL	11150	80	>100K
SM	12040	86	>100K
MM	13016	93	>100K
HM	15728	112	>100K
SH	16500	118	>100K
MH	20000	143	>100K
HH	25000	179	>100K

Approximate Color Temperature Multiplier	
5000K	1.03
4000K	1
3500K	0.97
3000K	0.94
2700K	0.91

ENERGY AND PERFORMANCE DATA

Input Voltage	120/277VAC
System Input Power	33 - 179 Watts*
Delivered Lumen Output	4650 - 25000 Lumens
Standard Dimming Control	0-10V
CCT	3000, 3500, 4000, 5000 Kelvin
CRI	82 (minimum)
Life Time Rating	>100,000 hrs @ L70
Input Frequency	50/60 Hz
Power Factor	>0.9
Operating Temp	30° to 50° C

*Actual wattage may differ by ±5% while operating 120/277V ±10%