



CATALOG #:

PROJECT:

TYPE:

LVVT

COMMERCIAL GRADE NARROW LED VAPOR TIGHT



The **LVVT** Series is a narrow LED vapor tight, gasketed enclosure that is completely dust and moisture resistant. The LVVT utilizes state-of-the-art LED technology to deliver a high CRI and high efficacy output.

APPLICATIONS: The LVVT was designed to be a high quality narrow LED vapor tight for use in kitchens, parking garages, canopy, stair wells, car washes, government facilities, schools, public areas, industrial facilities, etc. Suitable for both indoor and outdoor applications.

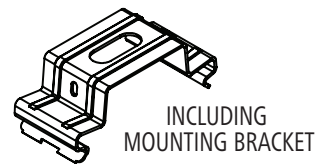
CONSTRUCTION: The fixture is constructed of a polycarbonate upper body and choice of acrylic or polycarbonate diffuser. Lens is securely positioned in a permanent, poured-in-place, polyurethane sealing gasketed housing. The diffuser and upper components are locked in place and sealed tightly with white POM clips. Optional stainless steel clips, white POM captive latches, and stainless steel captive latches are available. High impact acrylic/DR material diffuser composition.

OPTICAL SYSTEM: High output LED's available in 2700K, 3000K, 3500K, 4000K, and 5000K. CRI >82. Diffuser softens light dissipation for even light coverage. Various lens materials available.

ELECTRICAL SYSTEM: 0-10V 10% dimming driver included standard. Long-life LED system rated for >100K life hours (L70 @ 25°C). Metal gear tray for internal LED driver. Complies with federal energy efficiency standards.

CONTROLS: The fixture is compatible with 0-10V dimming controls, 0-10V dimming driver included standard. 50% step dimming is available upon request.

MOUNTING: The fixture can be suspended or surface mounted. Stainless steel mounting brackets come standard. No holes required for mounting. Optional narrow pendant mount bracket and mounting bail for chain hanging are available.



LISTINGS: Independently tested to IESNA LM-79 and LM-80 specifications. ETL and cETL Listed. Meets UL 746 (suitable for exposure and immersion of water). CSA approved. IP65, IP66 and IP67 Certified for Wet Location applications. Proudly made in America. Manufactured in Fort Worth, Texas.

WARRANTY: 5-Year Limited Warranty. Complete warranty and terms located at www.aelnow.com/warranty.

ORDERING INFORMATION:

Example: LVT-2-30-5L-M-RA-W-OWS

SERIES	LENGTH	CCT	OUTPUT (LUMENS)	WATTAGE	LENS OPTIONS	DISTRIBUTION	OPTIONS
LVT	4 51.75" Overall Length	27 2700K 30 3000K 35 3500K 40 4000K 50 5000K	2L 2000 3L 3000 5L 5000 7L 7000 10L 10,000 14L 12,000 XXXL Custom	M Multi-Volt (120-277VAC)	BLANK Shallow Lens Acrylic (Smooth Frosted) DAF Deep Lens Acrylic (Smooth Frosted) DAS Deep Lens Acrylic (Smooth Clear) SA Shallow Lens Acrylic (Smooth Clear) SPF Shallow Lens Polycarbonate (Smooth Frosted) SPS Shallow Lens Polycarbonate (Smooth Clear)	BLANK Narrow W Wide	12EBL 1200 Lumen Emergency Ballast OC4EX Occupancy Sensor NPMB Narrow Pendant Mount Bracket SSC Stainless Steel Lens Clip SSCL Stainless Steel Captive Latches WPCL White POM Captive Latches LDE1 Lutron LDE1 Hi-Lume 1% EcoSystem Fade-To-Black Driver Upgrade VDO Lutron Vive Integral RF controller with daylight and occupancy sensing.

*NOT available with 4' fixtures.
Additional costs for lens enclosure upgrades

Dimensions on Next Page 

ENERGY AND PERFORMANCE DATA

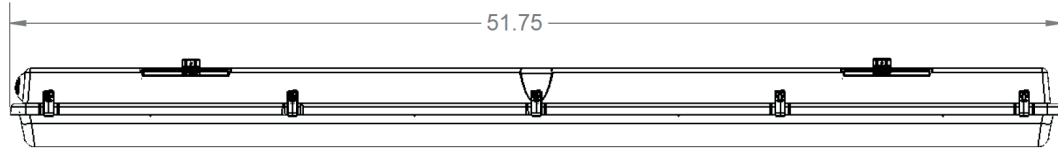
INPUT VOLTAGE:	120/277VAC
SYSTEM INPUT POWER:	13 - 157 WATTS*
DELIVERED LUMEN OUTPUT:	2000 - 25000 LUMENS
STANDARD DIMMING CONTROL:	0-10V
CCT:	2700, 3000, 3500, 4000, 5000 KELVIN
CRI:	82 (MINIMUM)
LIFE TIME RATING:	>100,000 HRS @ L70
INPUT FREQUENCY:	50/60 HZ
POWER FACTOR:	>0.9
OPERATING TEMP:	-30° TO 50° C

APPROXIMATE COLOR TEMPERATURE MULTIPLIER		
5000K	X	1.03
4000K	X	1
3500K	X	.97
3000K	X	.94
2700K	X	.91

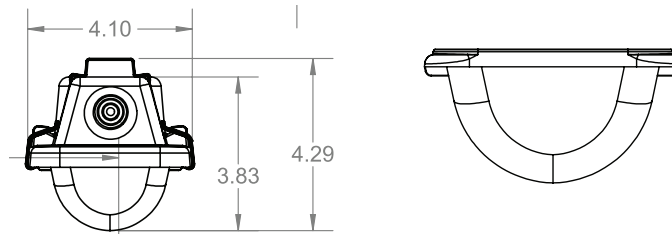
PART#	DELIVERED LUMENS	WATTS	L70 @20C (HRS)
2L	2000 LUMENS	13	>120K
3L	3000 LUMENS	19	>120K
5L	5000 LUMENS	31	>120K
7L	7000 LUMENS	44	>120K
10L	10,000 LUMENS	63	>120K
14L	12,000 LUMENS	75	>120K
18L	18,000 LUMENS	113	>120K
25K	25,000 LUMENS	157	>120K

*ACTUAL WATTAGE MAY DIFFER BY ±5% WHILE OPERATING 120/277V ±10%

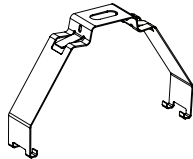
FIXTURE DIMENSIONS



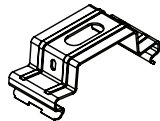
Shallow Lens Acrylic/Polycarbonate



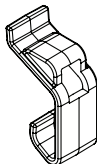
Narrow Pendant Mount Bracket



Narrow Mounting Bracket
(included standard)



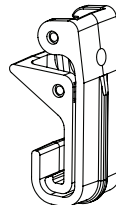
White POM Clips
(included standard)



Stainless Steel Clips



White POM Captive Latch



Stainless Steel Captive Latch

