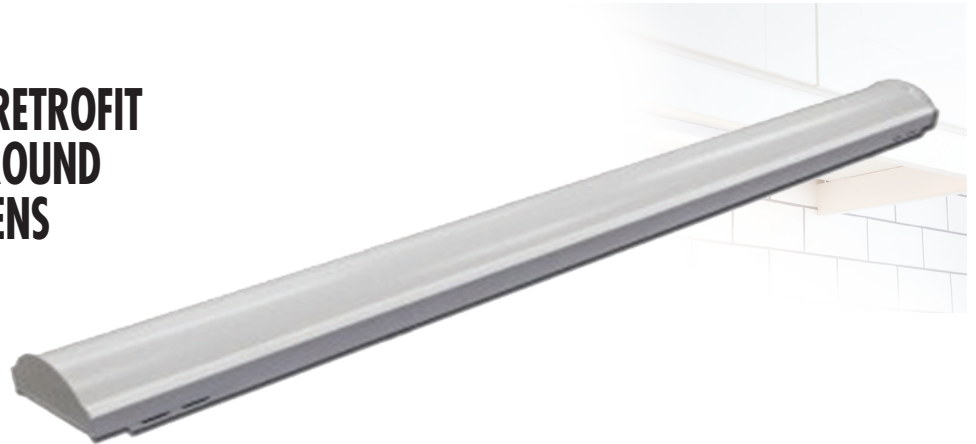


## LSRR LED STRIP RETROFIT KIT WITH ROUND FROSTED LENS



The **LSRR** Series is a versatile LED Strip, that is fitted with a round frosted lens, designed to modify existing fixtures into a high efficiency LED system. Designed to save time and energy upgrading fixtures, and leading to reduces costs. Available in 4' and 8' lengths.

**APPLICATIONS:** The LSRR Series of LED strips is perfect retrofitting fixtures in commercial applications, offices, government facilities, schools, public areas, and any where that requires quality strip ight.

**CONSTRUCTION:** The fixture is constructed of an aluminum housing, with a white polyester polymer finish. Minimum 93% reflectivity. Designed to retrofit into any existing 8' strip.

**OPTICAL SYSTEM:** The LSRR comes standard with a round frost white lens.

**ELECTRICAL SYSTEM:** Electronic drivers are available for 120/277V applications. Long-life LED system rated for >100K life hours (L70 @ 25°C). Metal gear tray for internal LED driver. Complies with federal energy efficiency standards.

**MOUNTING:** The fixture can be retrofitted into a strip that is surface mounted, or suspension mounted.

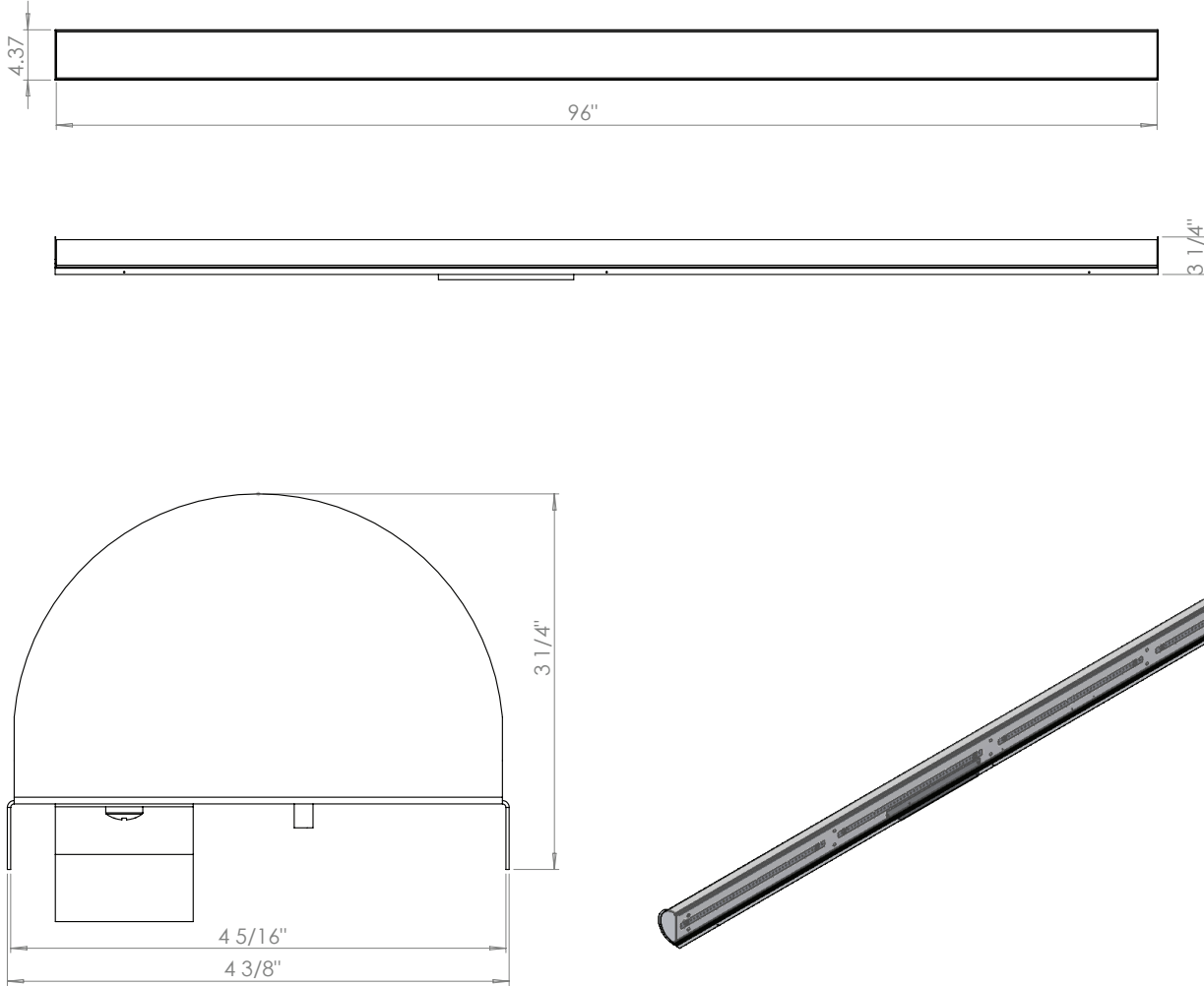
**LISTINGS:** ETL and cETL Listed. Damp location rated.

**WARRANTY:** 5-Year Limited Warranty. Complete warranty and terms located at [www.aelnow.com/warranty](http://www.aelnow.com/warranty).

### ORDERING INFORMATION Example: LSRR-4-30-12L-M-12EBL

SERIES	SIZE	CCT	ILLUMINATION LEVEL	VOLTAGE	OPTIONS
LSRR	4 4 Foot 8 8 Foot	30 3000K 35 3500K 40 4000K 50 5000K	<div>4' 8'</div> <div>4L 4000 Lumens 7L 7000 Lumens 11L 11000 Lumens 12L 12000 Lumens 13L 13000 Lumens 15L 15000 Lumens 16L 16000 Lumens 20L 20000 Lumens 25L 25000 Lumens XX Custom Lumens</div>	M Multi-Volt (120-277VAC)	<div>12EBL 1200 Lumen Emergency Ballast</div> <div>5 5-inch Channel</div> <div>SBWG\$ Wire Guard (4-Foot)</div> <div>UNV Universal Mount 4.25" and/or 5"</div>

## DIMENSIONS



### ENERGY AND PERFORMANCE DATA

INPUT VOLTAGE:	120/277VAC
SYSTEM INPUT POWER:	25.0 - 173.4 WATTS*
DELIVERED LUMEN OUTPUT:	4000 - 25000 LUMENS
STANDARD DIMMING CONTROL:	0-10V
CCT:	3000, 3500, 4000, 5000 KELVIN
CRI:	82 (MINIMUM)
LIFE TIME RATING:	>100,000 HRS @ L70
INPUT FREQUENCY:	50/60 HZ
POWER FACTOR:	>0.9
OPERATING TEMP:	-30° TO 50° C

#### APPROXIMATE COLOR TEMPERATURE MULTIPLIER

5000K	X	1.03
4000K	X	1
3500K	X	.97
3000K	X	.94
2700K	X	.91

OUTPUT	DELIVERED LUMENS	WATTS	L70 @20C (HRS)
4L	4000 LUMENS	25.0	>100K
7L	7000 LUMENS	43.8	>100K
11L	11000 LUMENS	68.8	>100K
12L	12000 LUMENS	75.0	>100K
13L	13000 LUMENS	81.3	>100K
15L	15000 LUMENS	93.8	>100K
16L	16000 LUMENS	100.0	>100K
20L	20000 LUMENS	125.0	>100K
25L	25000 LUMENS	173.4	>100K

\*ACTUAL WATTAGE MAY DIFFER BY ±5% WHILE OPERATING 120/277V ±10%