

LSPR

LED SPILL
RING BATH
VANITY LUMINAIRE



The LSPR is an elegantly designed LED spill ring bath vanity luminaire. Created with aesthetics and function in mind, the LSPR is the perfect combination of performance and design. Available in satin, nickel, and bronze finishes, this luminaire fits into any design concept.

CONSTRUCTION: Constructed out of heavy gauge cold roll steel, this fixture is not only beautiful, but durable.

OPTICAL: The LSPRs LEDs are binned and mixed to reach a pleasing, uniform light.

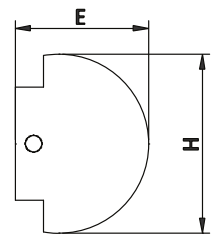
MOUNTING: Knockouts and mounting holes provide for both wall mount or ceiling mount applications.

LISTINGS: ETL and cETL Listed. Damp Location.

WARRANTY: 5-Year Limited Warranty. Complete warranty and terms located at www.aelnow.com/warranty.

ORDERING INFORMATION Example: LSPR-4-SN-40

SERIES	SIZE / WATTAGE / LUMENS	FINISH	CCT	VOLTAGE
LSPR	2 2" 23 Watts - 2200 Lumens	SN Satin Nickel	30 3000K	M 120/277V
	3 3' 36 Watts - 3260 Lumens	BRZ Bronze	35 3500K	
	4 4' 46 Watts - 4600 Lumens		40 4000K	
			50 5000K	
			MC Multiple Color Selectable*	



LSPR 2 24.5" x 5.7" x 4.5"
LSPR 3 36.5" x 5.7" x 4.5"
LSPR 4 48.5" x 5.7" x 4.5"

*MCT (Multiple Color Temperature) ranges from 3000k to 4000k