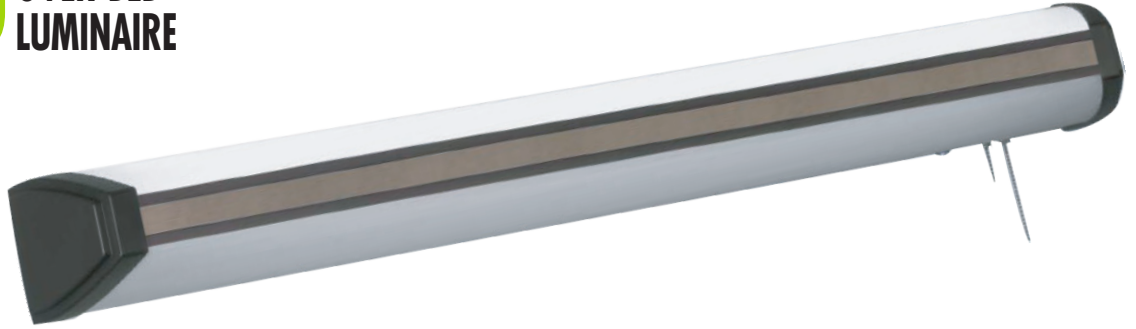


# LOBDID

LED DIRECT/INDIRECT  
OVER-BED  
LUMINAIRE



NEW



*Advantage Tune Available\**

**DESCRIPTION:** The LOBDID is a stylish Direct/Indirect Over-Bed Luminaire available in 2', 3' and 4' lengths. Various customization options allow this versatile fixture to fit into any design. Direct only option features a stylish closed-top design to prevent unwanted uplight. A convenient outlet is available as an option.

**APPLICATIONS:** The LOBDID was created for use in hospitals, longterm care facilities, assisted living facilities, nursing homes, but its versatile design makes it perfect for any application.

**OPTICAL SYSTEM:** High output LED's available in 3000K, 3500K, 4000K, and 5000K. CRI >82. A white acrylic extruded profile diffuser evenly disperses the light both directly and indirectly.

**CONSTRUCTION:** Molded white DR acrylic provides sturdy and thick one piece lens option. Compound curved contemporary styled wedge shaped end caps.

**ELECTRICAL SYSTEM:** Electronic driver 0-10V dimming standard. For outputs. Long-life LED system rated for >100K hours (L70 @ 45°C). Complies with federal energy efficiency standards.

**MOUNTING:** Surface Mount/Wall Mount included standard.

**MOUNTING:** UL listed.

**WARRANTY:** 5-Year Limited Warranty. Complete warranty and terms located at [www.aelnow.com/warranty](http://www.aelnow.com/warranty)

Ordering Example: LOBDID2-30-20L-30-35L-010-NRSW-M-CD1

| SERIES | SERIES               | CCT UP   | AMBIENT LEVEL UP   | CCT DOWN                                     | AMBIENT LEVEL DOWN   | END CAP FINISH   | FINISH  |
|--------|----------------------|--|--|--|--|--|---|
| LOBDID | 2 2'<br>3 3'<br>4 4' | Blank NONE<br>30 3000K<br>35 3500K<br>40 4000K<br>50 5000K<br>ATTW Tunable White | BLANK NONE<br>15LU 1500 Lumens<br>20LU 2000 Lumens<br>25LU 2500 Lumens<br>30LU 3000 Lumens<br>35LU 3500 Lumens<br>40LU 4000 Lumens<br>50LU 5000 Lumens<br>60LU 6000 Lumens<br>70LU 7000 Lumens<br>XX Custom Lumens | 30 3000K<br>35 3500K<br>40 4000K<br>50 5000K | BLANK NONE<br>15LU 1500 Lumens<br>20LU 2000 Lumens<br>25LU 2500 Lumens<br>30LU 3000 Lumens<br>35LU 3500 Lumens<br>40LU 4000 Lumens<br>50LU 5000 Lumens<br>60LU 6000 Lumens<br>70LU 7000 Lumens<br>XX Custom Lumens | 010 Brushed Nickel<br>302 Solid White<br>WM White Marble<br><br><i>See next page for finish examples</i> | NRSW Nickel Rear/Solid White Center<br>SW Solid White |

| CIRCUITS                    | SWITCHING  | VOLTAGE                 | DRIVER OPTIONS   | OPTIONS   |
|-----------------------------|--|-------------------------|--|---|
| 1 1 Circuit<br>2 2 Circuits | BLANK None<br>PC2 2 Position Pull Chain<br>PC3 3 Position Pull Chain | M Multi-Volt (120-277V) | BLANK 0-10V Dimming Driver (included standard)<br>CD1 0-10V 1% to Off Dimming Driver<br>CD5 0-10V 5% to Off Dimming Driver<br>EDN Electronic Driver Non-Dimming<br>LDE1 Lutron Hi-lume 1% EcoSystem LED driver with Soft-on, Fade-to-Black dimming technology<br>2TW1 2 Channel 0-10v Tunable White 1% Dimming Driver*<br>2TWCS 2 Channel 0-10v Tunable White Dimming Driver Compatible with Casambi** | 12EBL 1200 Lumen Emergency Ballast<br>VDO Lutron Vive integral fixture control (RF with daylight and occupancy sensing)<br>TPS Tamper-Proof Screws<br>LVC Low Voltage Controller<br>CO Convenience Outlet |

\*Prewired with Tunable White LED boards and (2) 0-10v drivers installed  
\*\*Prewired with Tunable White LED boards and Casambi ready fixture control

ENERGY AND PERFORMANCE DATA

|                           |                                     |
|---------------------------|-------------------------------------|
| INPUT VOLTAGE:            | 120/277VAC                          |
| SYSTEM INPUT POWER:       | 6.9 - 50.1 WATTS*                   |
| DELIVERED LUMEN OUTPUT:   | 1000 - 6000 LUMENS                  |
| STANDARD DIMMING CONTROL: | 0-10V                               |
| CCT:                      | 2700, 3000, 3500, 4000, 5000 KELVIN |
| CRI:                      | 82 (MINIMUM)                        |
| LIFE TIME RATING:         | >100,000 HRS @ L70                  |
| INPUT FREQUENCY:          | 50/60 HZ                            |
| POWER FACTOR:             | >0.9                                |
| OPERATING TEMP:           | -30° TO 50° C                       |

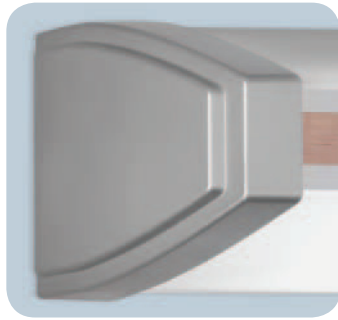
APPROXIMATE COLOR TEMPERATURE MULTIPLIER

|       |   |      |
|-------|---|------|
| 5000K | X | 1.03 |
| 4000K | X | 1    |
| 3500K | X | .97  |
| 3000K | X | .94  |
| 2700K | X | .91  |

| PART# | DELIVERED LUMENS | WATTS | L70 @20C (HRS) |
|-------|------------------|-------|----------------|
| 1.5L  | 1000             | 6.9   | >100K          |
| 2L    | 2000             | 13.9  | >100K          |
| 2.5L  | 2500             | 16.9  | >100K          |
| 3L    | 3000             | 20.8  | >100K          |
| 3.5   | 3500             | 24.1  | >100K          |
| 4L    | 4000             | 27.7  | >100K          |
| 5L    | 5000             | 34.7  | >100K          |
| 6L    | 6000             | 41.6  | >100K          |
| 7L    | 7000             | 50.1  | >100K          |

\*ACTUAL WATTAGE MAY DIFFER BY ±5% WHILE OPERATING 120/277V ±10%

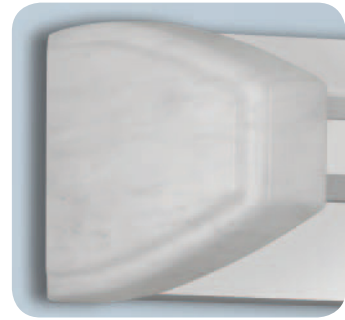
## END CAP FINISHES



010 - Brushed Nickel



302 - Solid White



WM - White Marble



NRSW Nickel Rear/Solid White Center



SWO - Solid White

## DIMENSIONS

