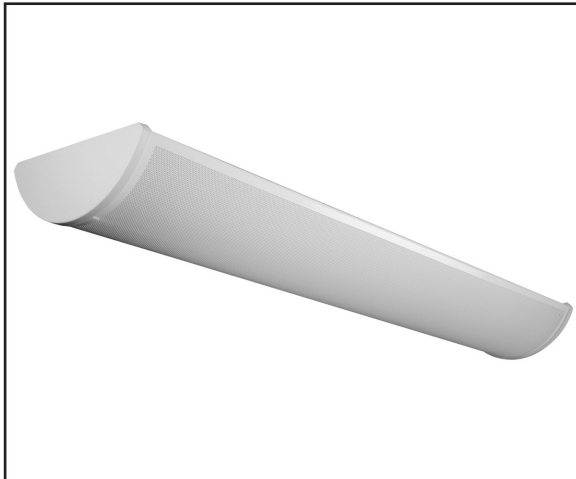


LHCL

HIGH PERFORMANCE HALF CYLINDER LINEAR LED LUMINAIRE

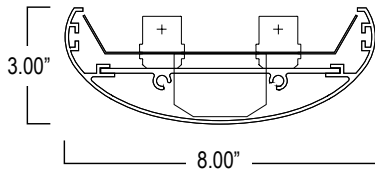


STANDARD

OPTIONAL



FIXTURE DIMENSIONS



LUMINAIRE SPECIFICATION

Example: LHCL40SMEDD1FW

PRODUCT SPECIFICATIONS

DESCRIPTION

The LHCL Series is a Half Cylinder Linear LED fixture available for stand-alone or continuous run applications. It is available for continuous run mounting. Driven by performance and a clean aesthetic, the LHCL series represents the ultimate in simplicity; a narrow, uniform line of light. Constructed with premium materials with industry leading technology, the LHCL Series is available in configurable runs. The LHCL Series integrates seamlessly with today's modern building management systems. With virtually unlimited applications, the LHCL Series allows architects and designers the freedom to experiment with their designs without exceeding ever decreasing energy budgets.

APPLICATIONS

The LHCL Series were designed to be high quality, energy efficient fluorescent fixtures for use in corridors, offices, government facilities, schools, and public areas.

CONSTRUCTION

The fixture is constructed die-formed heavy-gauge pre-painted cold rolled steel. 5/64" diameter microperforations at staggered 7/64" intervals. Hinged baffle for quick, easy lamp access.

OPTICAL SYSTEM

White polyester polymer finish with a high reflectivity. Microperforated baffle with white opal acrylic inlay combines soft downlight with even ceiling illumination.

ELECTRICAL SYSTEM

Electronic drivers are available for 120/277V applications. Long-life LED system rated for >100K life hours (L70 @ 25°C). Metal gear tray for internal LED driver. Complies with federal energy efficiency standards. 0-10 dimming standard.

MOUNTING

Designed to mount on exact 4 foot and 8 foot centers. Joiners will accept stems, single cable and power cords as supplied by others.

LISTINGS

UL and cUL Listed. Damp location rated.

WARRANTY

5-Year Limited Warranty. Complete warranty and terms located at www.aelnow.com/resources.

Output	Delivered Lumens	System Wattage	L70 @20C (hrs)
SL	4650	33	>100K
ML	7974	57	>100K
HL	11150	80	>100K
SM	12040	86	>100K
MM	13016	93	>100K
HM	15728	112	>100K
SH	16500	118	>100K
MH	20000	143	>100K
HH	25000	179	>100K

* Delivered Lumens shown were tested with 4000K LEDs and ASR (asymmetric/symmetric grid) lens.

SERIES	ROW LENGTH	COLOR TEMP	OUTPUT	VOLTAGE	DRIVER
LHCL	Single 4' 4'	30 3000K	SL Standard Low	M Multi-Volt (120/277VAC)	EDN Electronic Driver Non-Dimming
LHCLT	Tandem 8' 8'	35 3500K	ML Medium Low		EDD1 Electronic Driver 1-10V Dimming 10%
		40 4000K	HL High Low		EDD0 Electronic Driver 0-10V Dimming 1%
		50 5000K	SM Standard Medium		FLDD Fifth Light Dali, Dimming
			MM Medium Medium		LAS/ED Lutron A-Series, 1% EcoSystem Dimming
			HM High Medium		LAS/3D Lutron A-Series, 1% EcoSystem 3-wire Dimming
			SH Standard High		
			MH Medium High		
			HH High High		

HARNES OPTIONS	AIRCRAFT/RIGID PENDANTS	AIRCRAFT HANGAR NO WIRE WAY
FW FLEXIBLE ARMoured CABLE 6'	CPPF100 AIRCRAFT HANGER 100"	CP100 AIRCRAFT HANGER 100"
C6SJ 6' SJ FLEX WHIP 16/3	CPPF120 AIRCRAFT HANGER 120"	CP120 AIRCRAFT HANGER 120"
C10SJ 10' SJ FLEX WHIP 16/3	CPPFFX AIRCRAFT HANGER SPECIAL LENGTH	CPXX AIRCRAFT HANGER SPECIAL LENGTH
	RP1 Rigid Pendant 1"	
	RP2 Rigid Pendant 2"	
	RP3 Rigid Pendant 3"	
	RP6 Rigid Pendant 6"	