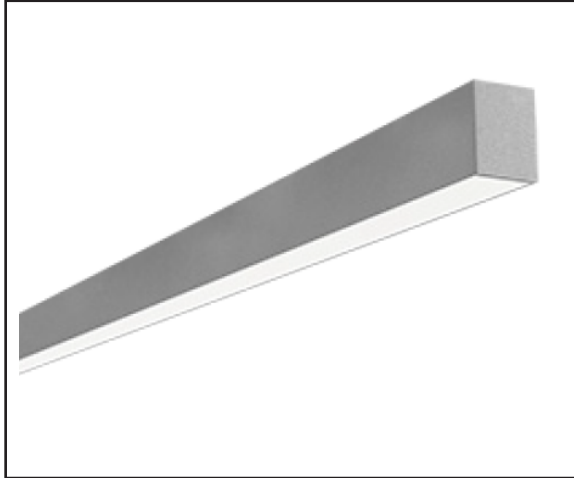




LDL6SMA

6"x6" Surface Mount Direct Aluminum Designer LED



STANDARD



OPTIONAL



LUTRON®

PRODUCT SPECIFICATIONS

DESCRIPTION:

The LDL6SMA is an architecturally designed Surface Mount Direct Aluminum LED Luminaire that is classically styled and fit for any interior. It is available for continuous run mounting.

APPLICATIONS:

The LDL6SMA Series of Surface Mount Direct Aluminum LED Luminaires were designed to be high quality, energy efficient LED fixtures for use in commercial applications, offices, hotel lobbies, museums, government facilities, schools, and public areas.

CONSTRUCTION:

The fixture is constructed of a 6" wide aluminum body. The LDL6SMA is available in any run length with 1' increments. Heavy duty housing crimped along sides for extra rigidity and straight alignment.

OPTICAL SYSTEM:

High output LED's available in 3000K, 3500K, 4000K, and 5000K. CRI>82. Satin lens provides for a beautiful architectural design while maintaining optimal light output.

ELECTRICAL SYSTEM:

Electronic drivers are available for 120/277V applications. 0-10V Dimming Standard. Long-life LED system rated for >120,000 life hours (L70@25 °C). Metal gear tray for internal LED driver. Complies with Federal Energy Efficiency Standards.

MOUNTING:

This fixture is designed to be surface mounted. Continuous run available.

LISTINGS:

Independently tested to IESNA LM-79 and LM-80 specifications. UL and cUL Listed.

WARRANTY:

5-Year Limited Warranty. Complete warranty and terms located at www.aelnow.com/warranty

ORDERING INFORMATION

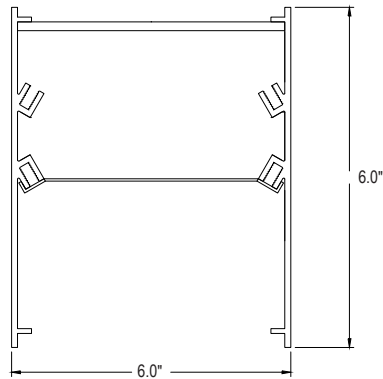
Example: LDL6SMA35MSMW8

Options: 12EBL

SERIES	CCT		OUTPUT		LENS		VOLTAGE		FINISH		ROW LENGTH	
LDL6SMA	30	3000K	S	Standard	S	Satin	M	120/277 (Multi-Volt)	W	White	2	2 Feet
	35	3500K	HS	High Standard					SP	Special	3	3 Feet
	40	4000K	M	Medium							4	4 Feet
	50	5000K	HM	High Medium							5	5 Feet
											6	6 Feet
											7	7 Feet
											8	8 Feet
											XX	XX Feet

DRIVER OPTIONS		OPTIONS		WIRING HARNESS	
BLANK	0-10V Dimming Driver (included standard)	12EBL	1200 Lumen Emergency Ballast	WH34	3-Wire 4 Feet
CD1	0-10V 1% to Off Dimming Driver	FW	Flex Whip Cable 6'	WH44	4-Wire 4 Feet
CD5	0-10V 5% to Off Dimming Driver	VDO	Lutron Vive Integral fixture control (RF with Daylight and Occupancy Sensing)	WH54	5-Wire 4 Feet
EDN	Electronic Driver Non-Dimming	FCJ50	Lutron Vive Attached Fixture Control (RF Only for 0-10V Drivers)	WH38	3-Wire 8 Feet
FLDD	Fifth Light Dali, Dimming	OC4EX	Occupancy Sensor	WH48	4-Wire 8 Feet
LDE1	Lutron Hi-lume 1% EcoSystem LED driver with Soft-on, Fade-to-Black dimming technology			WH58	5-Wire 8 Feet
LDE5	Lutron LDE5 5-Series Ecosystem 5% Dimming				
PSQ02U	Lutron T-Series 1% 2-Channel Tunable White				

FIXTURE DIMENSIONS

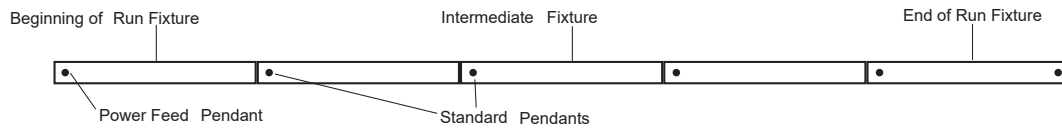


ROW CONFIGURATIONS

AEL would like to double check your Bill of Material upon placement of your order if the number of rows and their individual row lengths are provided on the purchase order as follows:

Row 1 - 8' Row 2 - 8' Row 3 - 20' Row 4 - 20'

*Please provide any additional pertinent information such as additional power drops required mid-row.



	Row Length	2'	4'	6'	8'	10'	12'	14'	16'	18'	20'	22'	24'	26'	28'	30'	32'	34'	36'	38'	40'	42'	44'	46'	48'
Fixture Length	2'	1		1		1		1		1		1		1		1		1		1		1		1	
	4'		1	1		1	1			1	1			1	1			1	1			1	1		
	8'				1	1	1	1	2	2	2	2	3	3	3	3	4	4	4	4	5	5	5	5	6
Total Pendants Needed		2	2	3	2	3	3	4	3	4	4	5	4	5	5	6	5	6	6	7	6	7	7	8	7

LED SYSTEM DATA

Output	Delivered Lumens Per Foot	System Wattage Per Foot	CRI	LPW
Standard	506 Lm/Ft	3.3	82	148
High Standard	709 Lm/Ft	5.1	82	139
Medium	965 Lm/Ft	6.9	82	140
High Medium	1,468 Lm/Ft	10.3	82	143

Additional Lumen options available add desired lumens to end of part #
 e.g. LDL6SMA40MSMW43500

ENERGY AND PERFORMANCE DATA

Input Voltage	120/277 VAC
Standard Dimming Control	0-10V
CCT	3000, 3500, 4000, 5000 Kelvin
CRI	82 (minimum)
Life Time Rating	>120,000 hrs at L70
Input Frequency	50/60Hz
Power Factor	>0.9
Operating Temp	Low Ambient -20°C/ High Ambient 50°C

Quick reference Output Guide Standard		
Length	Lumens	Wattage
2 Foot	1012	6.6
3 Foot	1518	9.9
4 Foot	2024	13.2
6 Foot	3036	19.8
8 Foot	4048	26.4

Quick reference Output Guide High Standard		
Length	Lumens	Wattage
2 Foot	1418	10.2
3 Foot	2127	15.3
4 Foot	2836	20.4
6 Foot	4254	30.6
8 Foot	5672	40.8

Quick reference Output Guide Medium		
Length	Lumens	Wattage
2 Foot	1930	13.8
3 Foot	2895	20.7
4 Foot	3860	27.6
6 Foot	5790	41.4
8 Foot	7720	55.2

Quick reference Output Guide High Medium		
Length	Lumens	Wattage
2 Foot	2936	20.6
3 Foot	4404	30.9
4 Foot	5872	41.2
6 Foot	8808	61.8
8 Foot	11744	82.4