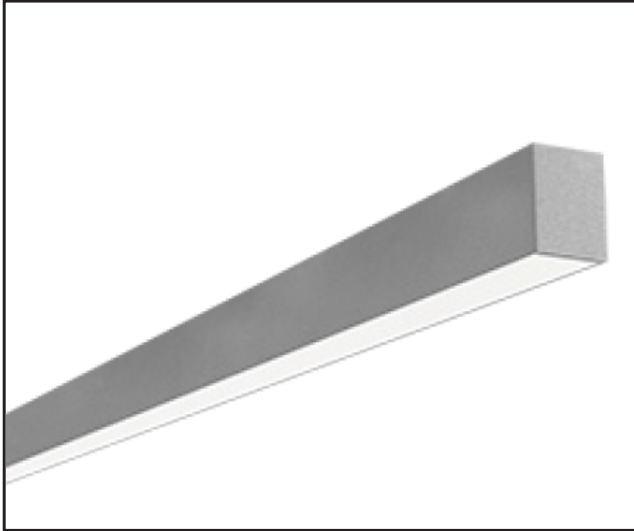


LDL4RWWA

4.0" x 4.5" Designer LED Recessed Wall Wash Aluminum Luminaire



STANDARD



OPTIONAL



PRODUCT SPECIFICATIONS

DESCRIPTION

The LDL4RWWA Series is an architecturally designed Recessed Wall Wash Aluminum LED Luminaire that is classically styled and fit for any interior. It is available for continuous run mounting.

APPLICATIONS

The LDL4RWWA Series of Recessed Wall Wash Aluminum luminaires are designed to be high quality, energy efficient LED fixtures for use in commercial applications, offices, hotel lobbies, museums, government facilities, schools, retail, public areas, and more.

CONSTRUCTION

The LDL4RWWA series is constructed of a 4.0" wide aluminum body. The fixture is available in any run length within 1' increments. Heavy duty housing crimped along sides for extra rigidity and straight alignment.

OPTICAL SYSTEM

High output LED's available in 3000K, 3500K, 4000K, and 5000K. CRI >82. Satin lens provides for a beautiful and uniform light distribution.

ELECTRICAL SYSTEM

Electronic drivers are available for 120/277V applications, 0-10V Dimming driver included standard. Long-life LED system rated for >120K life hours (L70 @ 25°C). Metal gear tray for internal LED driver. Complies with federal energy efficiency standards.

MOUNTING

This fixture is designed to be recessed mounted. Continuous run available.

LISTINGS

Independently tested to IESNA LM-79 and LM-80 specifications. UL and cUL Listed.

WARRANTY

5-Year Limited Warranty. Complete warranty and terms located at www.aelnow.com/warranty

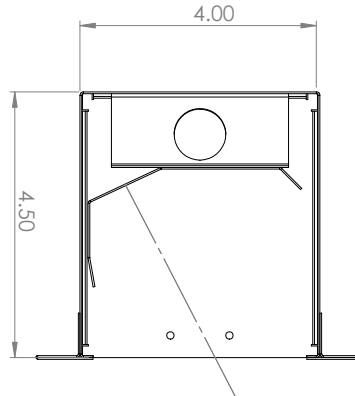
ORDERING INFORMATION

Example: LDL4RWWA40MA12FM4W
Options: 13EBL

| SERIES | COLOR TEMP | OUTPUT | LENS | MOUNTING | VOLTAGE |
|----------|------------|--------|------------------|---------------------------------|---------------------------|
| LDL4RWWA | 30 | 3000K | S Standard | S Satin Lens | M Multi-Volt (120/277VAC) |
| | 35 | 3500K | HS High Standard | | |
| | 40 | 4000K | M Medium | L Lay-in Grid | |
| | 50 | 5000K | HM High Medium | F Flanged FT Flangeless Trim | |

| FINISH | ROW LENGTH | DRIVER | OPTIONS |
|-----------------------|------------|--|---|
| W White SP Special | 2 2 Feet | BLANK 0-10V Dimming Driver (included standard) | 12EBL 1200 Lumen Emergency Ballast VDO Lutron Vive Integral fixture control (RF with Daylight and Occupancy Sensing) FCJS0 Lutron Vive Attached Fixture Control (RF Only for 0-10V Drivers) |
| | 3 3 Feet | CD1 0-10V 1% to Off Dimming Driver | |
| | 4 4 Feet | CD5 0-10V 5% to Off Dimming Driver | |
| | 5 5 Feet | EDN Electronic Driver Non-Dimming | |
| | 6 6 Feet | FLDD Fifth Light Dali, Dimming | |
| | 7 7 Feet | LDE1 Lutron Hi-lume 1% EcoSystem LED driver with Soft-on, Fade-to-Black dimming technology | |
| | 8 8 Feet | LDE5 Lutron LDE5 5-Series Ecosystem 5% Dimming | |
| | XX XX Feet | PSQ02U Lutron T-Series 1% 2-Channel Tunable White | |

FIXTURE DIMENSIONS

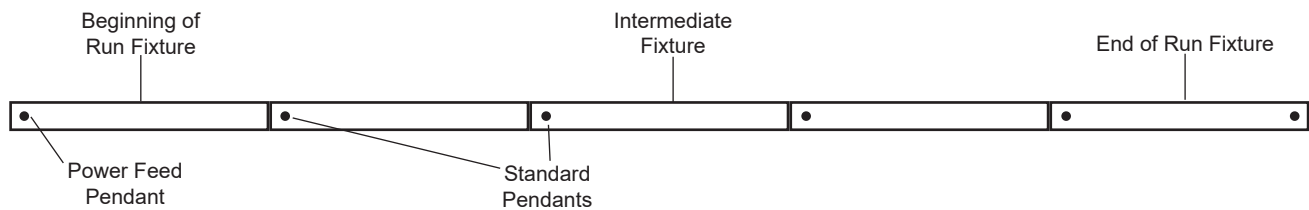


ROW CONFIGURATIONS

AEL would like to double check your Bill of Material upon placement of your order if the number of rows and their individual row lengths are provided on the purchase order as follows:

Row 1 - 8' Row 2 - 8' Row 3 - 24' Row 4 - 24'

Please provide any additional pertinent information such as additional power drops required mid-row.



| Row Length | 2' | 4' | 6' | 8' | 10' | 12' | 14' | 16' | 18' | 20' | 22' | 24' | 26' | 28' | 30' | 32' | 34' | 36' | 38' | 40' | 42' | 44' | 46' | 48' |
|-----------------------|----|----|----|----|-----|-----|-----|-----|-----|-----|-----|-----|-----|-----|-----|-----|-----|-----|-----|-----|-----|-----|-----|-----|
| 2' | 1 | | 1 | | 1 | | 1 | | 1 | | 1 | | 1 | | 1 | | 1 | | 1 | | 1 | | 1 | |
| 4' | | 1 | 1 | | | 1 | 1 | | | 1 | 1 | | | 1 | 1 | | | 1 | 1 | | | 1 | 1 | |
| 8' | | | | 1 | 1 | 1 | 1 | 2 | 2 | 2 | 2 | 3 | 3 | 3 | 3 | 4 | 4 | 4 | 4 | 5 | 5 | 5 | 5 | 6 |
| Total Pendants Needed | 2 | 2 | 3 | 2 | 3 | 3 | 4 | 3 | 4 | 4 | 5 | 4 | 5 | 5 | 6 | 5 | 6 | 6 | 7 | 6 | 7 | 7 | 8 | 7 |

LED SYSTEM DATA

| Output | Delivered Lumens Per Foot | System Wattage Per Foot | CRI | LPW |
|---------------|---------------------------|-------------------------|-----|-----|
| Standard | 506 Lm/Ft | 3.3 | 82 | 148 |
| High Standard | 709 Lm/Ft | 5.1 | 82 | 139 |
| Medium | 965 Lm/Ft | 6.9 | 82 | 140 |
| High Medium | 1,468 Lm/Ft | 10.3 | 82 | 143 |

ENERGY AND PERFORMANCE DATA

| | |
|--------------------------|--------------------------------------|
| Input Voltage | 120/277 VAC |
| Standard Dimming Control | 0-10V |
| CCT | 3000, 3500, 4000, 5000 Kelvin |
| CRI | 82 (minimum) |
| Life Time Rating | >100,000 hrs at L70 |
| Input Frequency | 50/60Hz |
| Power Factor | >0.9 |
| Operating Temp | Low Ambient -20°C/ High Ambient 50°C |

Additional Lumen options available add desired lumens to end of part #
 e.g. LDL4RWWA40MSMW43500

| Length | Lumens | Wattage |
|--------|--------|---------|
| 2 Foot | 1012 | 6.6 |
| 3 Foot | 1518 | 9.9 |
| 4 Foot | 2024 | 13.2 |
| 6 Foot | 3036 | 19.8 |
| 8 Foot | 4048 | 26.4 |

| Length | Lumens | Wattage |
|--------|--------|---------|
| 2 Foot | 1418 | 10.2 |
| 3 Foot | 2127 | 15.3 |
| 4 Foot | 2836 | 20.4 |
| 6 Foot | 4254 | 30.6 |
| 8 Foot | 5672 | 40.8 |

| Length | Lumens | Wattage |
|--------|--------|---------|
| 2 Foot | 1930 | 13.8 |
| 3 Foot | 2895 | 20.7 |
| 4 Foot | 3860 | 27.6 |
| 6 Foot | 5790 | 41.4 |
| 8 Foot | 7720 | 55.2 |

| Length | Lumens | Wattage |
|--------|--------|---------|
| 2 Foot | 2936 | 20.6 |
| 3 Foot | 4404 | 30.9 |
| 4 Foot | 5872 | 41.2 |
| 6 Foot | 8808 | 61.8 |
| 8 Foot | 11744 | 82.4 |