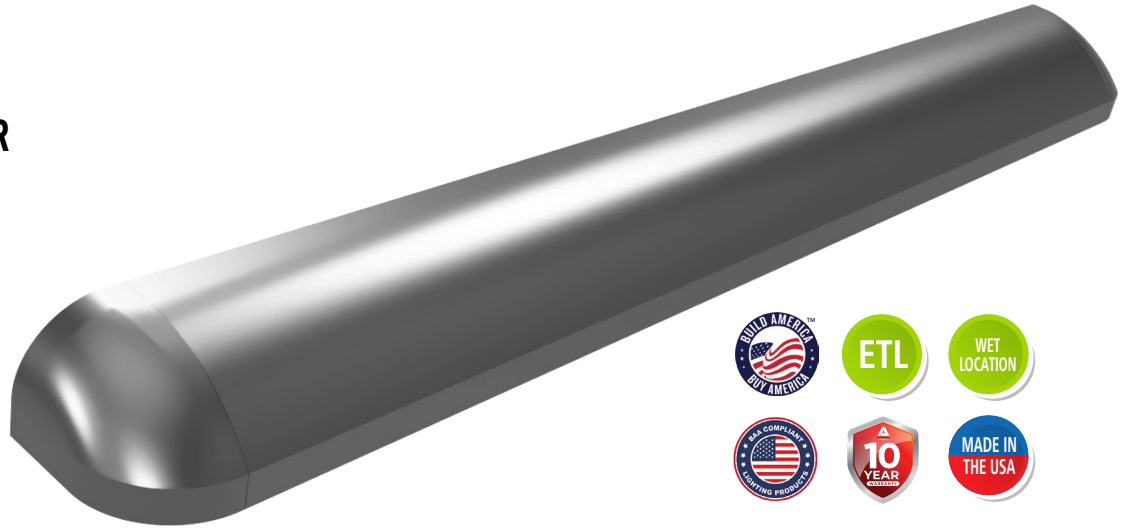


## LDE WALL MOUNT OVERHEAD DOOR MOUNT LED



**DESCRIPTION:** Introducing our new **LDE**... the newest and most intelligently designed drip edge luminaire on the market. This is the ultimate combination of lighting and water protection for use over doorways. This design features curved contours that are both modern and highly appealing. Available in multiple lengths to match a given door opening. The LDE is as versatile as it is attractive. Constructed from seam-welded extruded aluminum and aluminum cast end caps. Our quick-mount system facilitates installation and maintenance.

**HOUSING:** Constructed from seam-welded extruded 5052 marine-grade aluminum. Chemically primed and finished polyester powder coat. Door frame is an inset design and is also constructed from marine-grade aluminum.

**WALL MOUNT:** Constructed from marine grade heat treated extruded aluminum. Chemically primed and finished with a polyester powder coat. Designed for fast mounting to housing and secured with TORX® captive head stainless steel fasteners.

**LENS FRAME:** Constructed from marine grade heat treated extruded aluminum. Secured to frame with TORX® captive head stainless steel fasteners.

**LENS:** Extruded UV stabilized opal polycarbonate with integral prisms is standard. Maximum wall thickness 0.160". Lens is secured to the housing with die cast aluminum door frame and stainless steel TORX® head screws.

**END CAPS:** Die-cast marine grade aluminum. Chemically primed and finished with a polyester powder coat.

**DRIVERS:** Dimming to 1%, 10% or programable lumen output driver options. A non-dimming driver is also available.

**LED:** CCT: 2700K, 3000K, 3500K, 4000K, or 5000K and 82 CRI wired in parallel-series, available as 90 CRI. L70 projected life of over 130,000 hours at 50°C.

**GASKETS:** Closed cell self-adhesive neoprene gaskets are used to create a watertight seal between fixture and mounting surface.

**LISTINGS:** ETL and cETL Listed. Wet location standard.

**GOVERNMENT PROCUREMENT:** **BAA** – Buy America(n) Act: Product qualifies as a domestic end product under the Buy American Act as implemented in the FAR and DFARS. Product also qualifies as manufactured in the United States under DOT Buy America regulations. **BABA** – Build America Buy America: Product qualifies as produced in the United States under the definitions of the Build America, Buy America Act.

**WARRANTY:** Lifetime warranty; Advantage Environmental Lighting will repair or replace any fixture damaged due to vandalism for the lifetime of the installation. A 10-year warranty on LED boards against operational defects is also included. This is the only warranty provided and no other statements in this specification sheet create any warranty. All other express and implied warranties are disclaimed. Complete warranty and terms located at <http://aelnow.com/10-year-warranty/>

Ordering Info on Next Page ►

## ORDERING INFORMATION EXAMPLE: LDE-24-2L-40-M-DP-WHT

SERIES	SIZE <sup>1</sup>	OUTPUT	DRIVER	DUAL DRIVERS
LDE	12 12 IN*	05L 500 Lumens	BLANK 0-10V Dimming Driver (included standard)	TDRV Two LED drivers for independent LED board operations.
MOUNTABLE	24 24 IN*	1L 1000 Lumens	CD5 0-10V 5% to Off Dimming Driver	
FULL CUT-OFF	36 36 IN	08L 800 Lumens	EDN Electronic Driver Non-Dimming	
PATH OF EGRESS LUMINAIRE	48 48 IN	2L 2000 Lumens	DALI 1% Dali Dimming Driver	
—	72 72 IN	14L 1400 Lumens	LDE1 Lutron Hi-lume 1% EcoSystem LED driver with Soft-on, Fade-to-Black dimming technology	
VANDAL RESISTANT	96 96 IN	30L 3000 Lumens		
	XX CUSTOM	18L 1800 Lumens		
		4L 4000 Lumens		
		28L 2800 Lumens		
		6L 6000 Lumens		
		38L 3800 Lumens		
		8L 8000 Lumens		
		XX Custom Lumens		

CCT	VOLTAGE	OUTER LENS	FINISH	OPTIONS
27 2700K	M 120/277V	FP156 .156 White	WHT White	14EBL 14 Watt Emergency Driver
30 3000K	277 277/V	Frosted	BLK Black	FZ Fuse and Holder
35 3500K	MV 120-277/V	Polycarbonate	BRZ Bronze	PC Photoelectric Switch
40 4000K	347 347/V		GRN Green	OS Passive Occupancy Sensor
50 5000K			SLV Silver	AH Phillips Head fasteners
			GRY Grey	
			SP Custom Color	
			Standard RAL Colors	

### ENERGY AND PERFORMANCE DATA

INPUT VOLTAGE:	120/277VAC
SYSTEM INPUT POWER:	6.25 - 37.5 WATTS*
DELIVERED LUMEN OUTPUT:	500 - 6000 LUMENS
STANDARD DIMMING CONTROL:	0-10V
CCT:	2700, 3000, 3500, 4000, 5000 KELVIN
CRI:	82 (MINIMUM)
LIFE TIME RATING:	>100,000 HRS @ L70
INPUT FREQUENCY:	50/60 HZ
POWER FACTOR:	>0.9
OPERATING TEMP:	-30° TO 50° C

#### APPROXIMATE COLOR TEMPERATURE MULTIPLIER

5000K	X	1.03
4000K	X	1
3500K	X	.97
3000K	X	.94
2700K	X	.91

PART#	DELIVERED LUMENS	WATTS	L70 @20C (HRS)
1L	1000	6.25	>100K
2L	2000	12.5	>100K
3L	3000	20.8	>100K
4L	4000	25.0	>100K
5L	5000	31.3	>100K
6L	6000	37.5	>100K

\*ACTUAL WATTAGE MAY DIFFER BY ±5% WHILE OPERATING 120/277V ±10%



