



CATALOG #:

PROJECT:

TYPE:

## CLD RECESSED GRID OR FLANGED LED CLEANROOM



**CLEANROOM**  
LED LUMINAIRES



The **CLD** is an IP65, wet location, IC-rated cleanroom luminaire which provides a cost-effective LED solution. A gasketed housing and door frame create a sealed enclosure. The CLD is available in 1x2, 1x4, 2x2, and 2x4 sizes. Available options such as anti-microbial paint, 90 CRI, MILSTD 461G compliant, and 14W emergency driver. Suitable for biosafety labs rated BSL 1 and 2 (inset doorframe) and biosafety labs rated BSL 3 and 4 (overlap doorframe). Suitable for Class 1/ISO 3 Cleanrooms. For use in insulated ceilings. NSF/ANSI 2 Food Zone, Splash Zone and Non-Food Zone Applications.

**HOUSING:** Various housing material options are available. If you do not see an option listed, please consult factory. Seam-welded construction. All doors attached to the housing with stainless steel aircraft safety cables, and are completely sealed with closed cell gaskets. Philips head screws secure door frame to housing (Optional stainless steel screws available). White TGIC polyester powder coat standard. Anti-microbial paint optional.

**DOORFRAME:** Inset or Overlap door frame options with choice of Cold Roll Steel, Stainless Steel, or Aluminum. White TGIC polyester powder coat standard, with optional anti-microbial white paint. Door-frame secured to housing with stainless steel aircraft cables and Phillips head stainless steel fasteners. Closed-cell gasket completely seals the doorframe and the housing.

**MOUNTING:** Recessed grid and recessed flanged applications. Easy installation with adjustable 90° swing arm system standard. Universal mounting allows for both recessed flanged and recessed grid mounting.

**OPTICAL SYSTEM:** A variety of lensing options are available to fit the needs of any application. If additional lensing options are needed, consult factory.

**ELECTRICAL SYSTEM:** Electronic driver 0-10V 1% dimming standard. Long-life LED system rated for >100K hours (L70 @ 25°C). Complies with federal energy efficiency standards.

**LED:** 80 CRI or 90 CRI LEDs available in 2700K, 3000K, 3500K, 4000K and 5000K. Life is 100,000 hours at 70% lumen maintenance. LM79, LM80 and TM21 compliant.

**LISTINGS:** Approved to CSA and ETL standards. ETL listed for wet location. NSF Listed. Food Safe. IP65 rated with inset doorframe, IP66 rated with overlap doorframe. Inset doorframe suitable for biosafety labs rated BSL 1 and 2, overlap doorframe suitable for biosafety labs rated BSL3 and 4. Suitable for Class 1/ISO 3 Cleanrooms.

**WARRANTY:** 5-Year Limited Warranty. Complete warranty and terms located at [www.aelnow.com/warranty](http://www.aelnow.com/warranty).

Ordering Information on Next Page ►

**ORDERING INFORMATION:**

**Example: CLD-24-40-14L-G-B18-B18-INS-PA19-M-90**

SERIES	SIZE	CCT	OUTPUT	MOUNTING	HOUSING MATERIAL	DOOR MATERIAL
CLD	11 1x1	27 2700K	1L 1000 Lumens (very low)	G Grid	B20 20 Gauge Cold Roll Steel	B18 18 Gauge Cold Roll Steel
	12 1x2	30 3000K	2L 2000 Lumens (low)	F Flange	B18 18 Gauge Cold Roll Steel	SH18 18 Gauge Stainless Steel (Polished 304)
	14 1x4	35 3500K	4L 4000 Lumens (Standard Low)		SH18 18 Gauge Stainless Steel (Polished 304)	SH186 18 Gauge Stainless Steel (Polished 316)
	22 2x2	40 4000K	7L 7000 Lumens (Medium Low)		SH186 18 Gauge Stainless Steel (Polished 316)	SHP18 18 Gauge Stainless Steel (Painted 304)
	24 2x4	50 5000K	11L 11000 Lumens (High Low)		SHP18 18 Gauge Stainless Steel (Painted 304)	SHP186 18 Gauge Stainless Steel (Painted 316)
			12L 12000 Lumens (Standard Medium)		SHP186 18 Gauge Stainless Steel (Painted 316)	SHB18 18 Gauge Stainless Steel (Brushed 304)
			13L 13000 Lumens (Medium Medium)		SHB18 18 Gauge Stainless Steel (Brushed 304)	SHB186 18 Gauge Stainless Steel (Brushed)
			15L 15000 Lumens (High Medium)		SHB186 18 Gauge Stainless Steel (Brushed 316)	ALH .063" Aluminum (Painted)
			17L 17000 Lumens (High)			
			20L 20000 Lumens (Medium High)			
		25L 25000 Lumens (High High)				
		XX Custom Lumens				

DOOR TYPE	LENS	VOLTAGE	DRIVER	OPTIONS
INS Inset Door*	PA19 .156" Prismatic Acrylic #19	M 120/277V	BLANK 0-10V 1% Dimming Driver (included standard)	14EBL 14 Watt Emergency Ballast
OVL Overlap Door	PA125 .125 Prismatic Acrylic	HV 347-480VAC	CD5 0-10V 5% to Off Dimming Driver	AH Allenhead Screws with center pin reject
	PA156 .156 Prismatic Acrylic		EDN Electronic Driver Non-Dimming	LN LED Night Light (Consult factory for available CCT)
	PA187 .187 Prismatic Acrylic		DALI 1% Dimming Driver	FZ Fuse Holder
	PP125 Prismatic Inner with .125 Clear Outer Polycarbonate		LDE1 Lutron Hi-lume 1% EcoSystem LED driver with Soft-on, Fade-to-Black dimming technology	WL Wet Location
	SY Symmetric Diffused DR Acrylic			UV .005 UV Absorbing Overlay
	125P .125 Clear Polycarbonate			90 90 CRI
				AM Antimicrobial White Paint
				IS Internal Occupancy Sensor (Microwave)

\*Anti-Ligature only available with Inset Door

Dimensions on Next Page

**ENERGY AND PERFORMANCE DATA**

INPUT VOLTAGE:	120/277VAC
SYSTEM INPUT POWER:	6.3 - 156.3 WATTS*
DELIVERED LUMEN OUTPUT:	1000 - 25000 LUMENS
STANDARD DIMMING CONTROL:	0-10V
CCT:	2700, 3500, 4000, 5000 KELVIN
CRI:	80 (MINIMUM)
LIFE TIME RATING:	>100,000 HRS @ L70
INPUT FREQUENCY:	50/60 HZ
POWER FACTOR:	>0.9
OPERATING TEMP:	-30° TO 50° C

APPROXIMATE COLOR TEMPERATURE MULTIPLIER

5000K	X	1.03
4000K	X	1
3500K	X	.97
3000K	X	.94
2700K	X	.91

OUTPUT	DELIVERED LUMENS	WATTS	L70 @20C (HRS)
1L	1000 LUMENS	6.3	>100K
2L	2000 LUMENS	12.6	>100K
4L	4000 LUMENS	25.0	>100K
7L	7000 LUMENS	43.8	>100K
11L	11000 LUMENS	68.8	>100K
12L	12000 LUMENS	75.0	>100K
13L	13000 LUMENS	81.3	>100K
15L	15000 LUMENS	93.8	>100K
16L	16000 LUMENS	100.0	>100K
20L	20000 LUMENS	125.0	>100K
25L	25000 LUMENS	156.3	>100K

\*ACTUAL WATTAGE MAY DIFFER BY ±5% WHILE OPERATING 120/277V ±10%

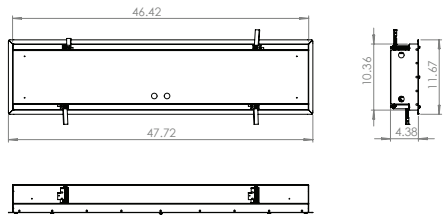


**ROUGH IN SIZE LISTED BELOW.**  
Please pay careful attention to these dimensions.

## DIMENSIONS

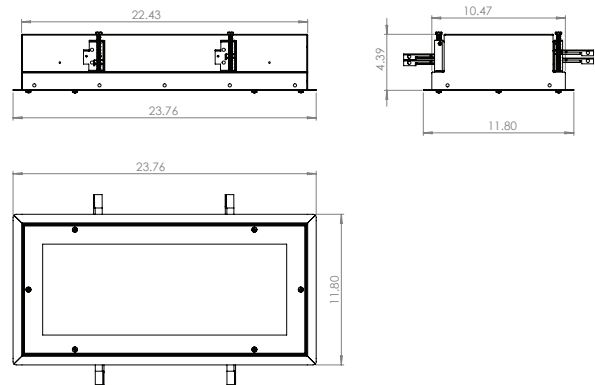
**1x4**

**ROUGH IN SIZE TO BE 46 11/16" X 10 5/8"**



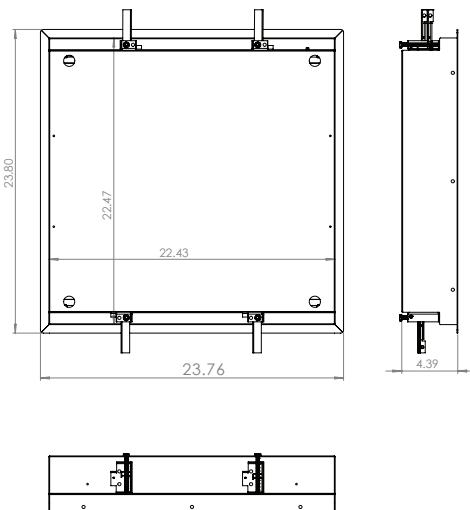
**1x2**

**ROUGH IN SIZE TO BE 22 11/16" X 10 5/8"**



**2x2**

**ROUGH IN SIZE TO BE 22 5/8" X 22 5/8"**



**2x4**

**ROUGH IN SIZE TO BE 46 5/8" X 22 11/16"**

