

CLB

MINI WASH
DOWN LED
CLEAN ROOM
LUMINAIRE



The **CLB** Series is an ISO 5, IP67 Rated Mini Wash Down LED Clean Room luminaire. It is compact for tight areas and boasts a poured-in gasketed enclosure that is completely dust and moisture resistant. The CLB utilizes state-of-the-art LED technology to deliver the highest possible efficiency in the lighting industry.

APPLICATIONS: The CLB Series are designed to be high quality, energy efficient fixtures for use in food processing facilities, pharmaceutical manufacturing facilities, electrical component manufacturing facilities, and any application that needs a sealed, economical clean room solution. Suitable for both indoor and outdoor applications.

CONSTRUCTION: The fixture is constructed of a single-piece 5VA fiberglass body and a high impact acrylic or polycarbonate diffuser securely positioned with a permanent, poured-in-place; polyurethane sealing gasket. The diffuser and upper components are locked in place and sealed tightly with captive retaining latches.

OPTICAL SYSTEM: White polyester polymer finish reflector with a minimum 93% reflectivity. Frosted and clear high impact acrylic or polycarbonate lenses are available. Clear acrylic transmission: 93%, frosted acrylic transmission 88%. Clear polycarbonate transmission 89%, frosted polycarbonate transmission 82%.

ELECTRICAL SYSTEM: Electronic drivers are available for 120/277V applications. Long-life LED system rated for >100K life hours (L70 @ 45°C). 2 Rows of LEDs standard. 3 row and 4 row options are available. Complies with federal energy efficiency standards. 0-10V dimming standard.

CONTROLS: The fixture is compatible with 0-10V dimming controls, 0-10V dimming driver included standard. 50% step dimming is available upon request.

MOUNTING: The fixture can be suspended or surface mounted. 316 stainless steel mounting bracket included standard. V-Hook and flexible ceiling mount mounting accessories are available.

LISTINGS: CSA approved. NSF International Certified. IP66 and IP67 Certified. Suitable for ISO 5-9 cleanrooms. NEMA 4X. Manufactured in the USA, BAA compliant. ETL listed.

WARRANTY: 5-Year Limited Warranty. Complete warranty and terms located at www.aelnow.com/warranty.

ORDERING INFORMATION

Example: CLB-30-5L-CA-M-CD1

SERIES	CCT	OUTPUT	LENS OPTIONS	VOLTAGE	DRIVER OPTIONS	OPTIONS
CLB	30 3000K 35 3500K 40 4000K 50 5000K	2L 2000 Lumens 3L 3000 Lumens 5L 5000 Lumens 7L 7000 Lumens 9L 9000 Lumens 12L 12000 Lumens 16L 16000 Lumens	CA Clear Acrylic FA Frosted Acrylic CP Clear Polycarbonate Fp Frosted Polycarbonate	M Multi-Volt (120-277VAC)	Blank 0-10V 10% Dimming Driver CD1 0-10V 1% Dimming Driver CD5 0-10V 5% Dimming Driver EDN Non-Dimming Electronic Driver DALI DALI 1% Dimming Driver LDE1 Lutron Hi-Lume 1% EcoSystem Driver	14EBL 14W Emergency Driver WS Wet Location Occupancy Sensor VHOOK V-Hook Mounting Hooks FCM Flexible Mounting Bracket RMB Rigid Mounting Beam Bracket 90 90 CRI 3LED 3 Rows of LEDs 4LED 4 Rows of LEDs



Compact Size

- 26.6" Long
- 14.5" Wide
- 5.8" Deep

DELIVERED LUMENS	SYSTEM WATTAGE	L70 @ 20C (HRS)
2000	12.5	>100K
3000	18.7	>100K
5000	31.3	>100K
7000	43.8	>100K
9000	33.3	>100K
12000	56.3	>100K
16000	98.5	>100K

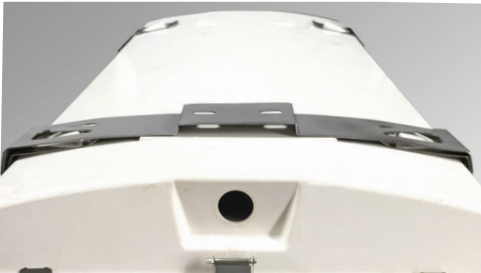
ENERGY AND PERFORMANCE DATA

INPUT VOLTAGE:	120/277VAC
SYSTEM INPUT POWER:	12.5-98.5 WATTS*
DELIVERED LUMEN OUTPUT:	2000-16000 LUMENS
STANDARD DIMMING CONTROL:	0-10V
CCT:	3000, 3500, 4000, 5000 KELVIN
CRI:	82 (MINIMUM)
LIFE TIME RATING:	>120,000 HRS @ L70
INPUT FREQUENCY:	50/60 HZ
POWER FACTOR:	>0.9
OPERATING TEMP:	-30° TO 50° C

*ACTUAL WATTAGE MAY DIFFER BY ±5% WHILE OPERATING 120/277V ±10%

MOUNTING ACCESSORIES

Surface Mount Bracket
(included standard)



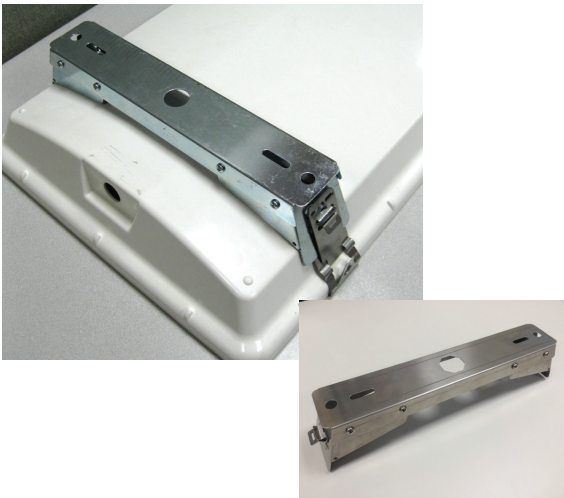
VOOK



FCM



RMB



SCS

